

**INSTRUMENT
APPROACH
CHART - ICAO**

VAR 2° E

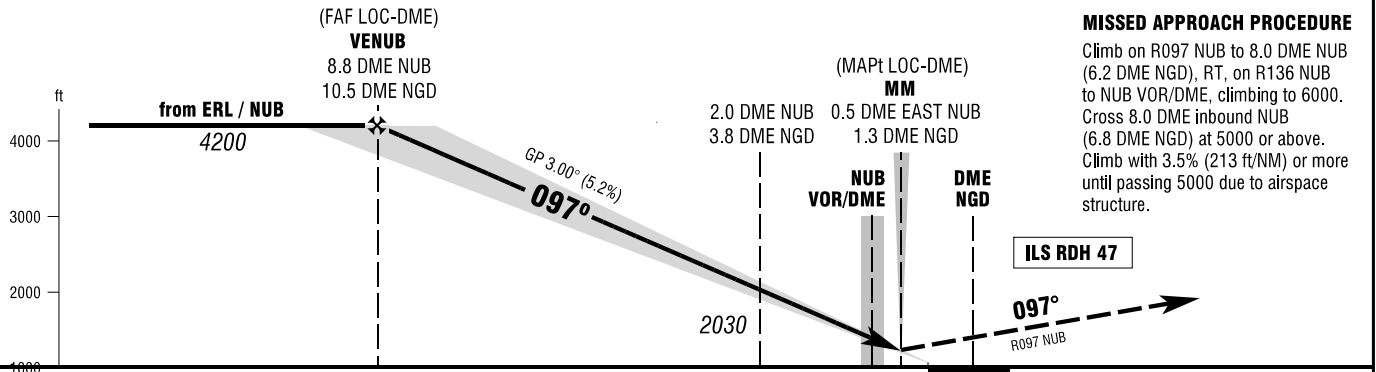
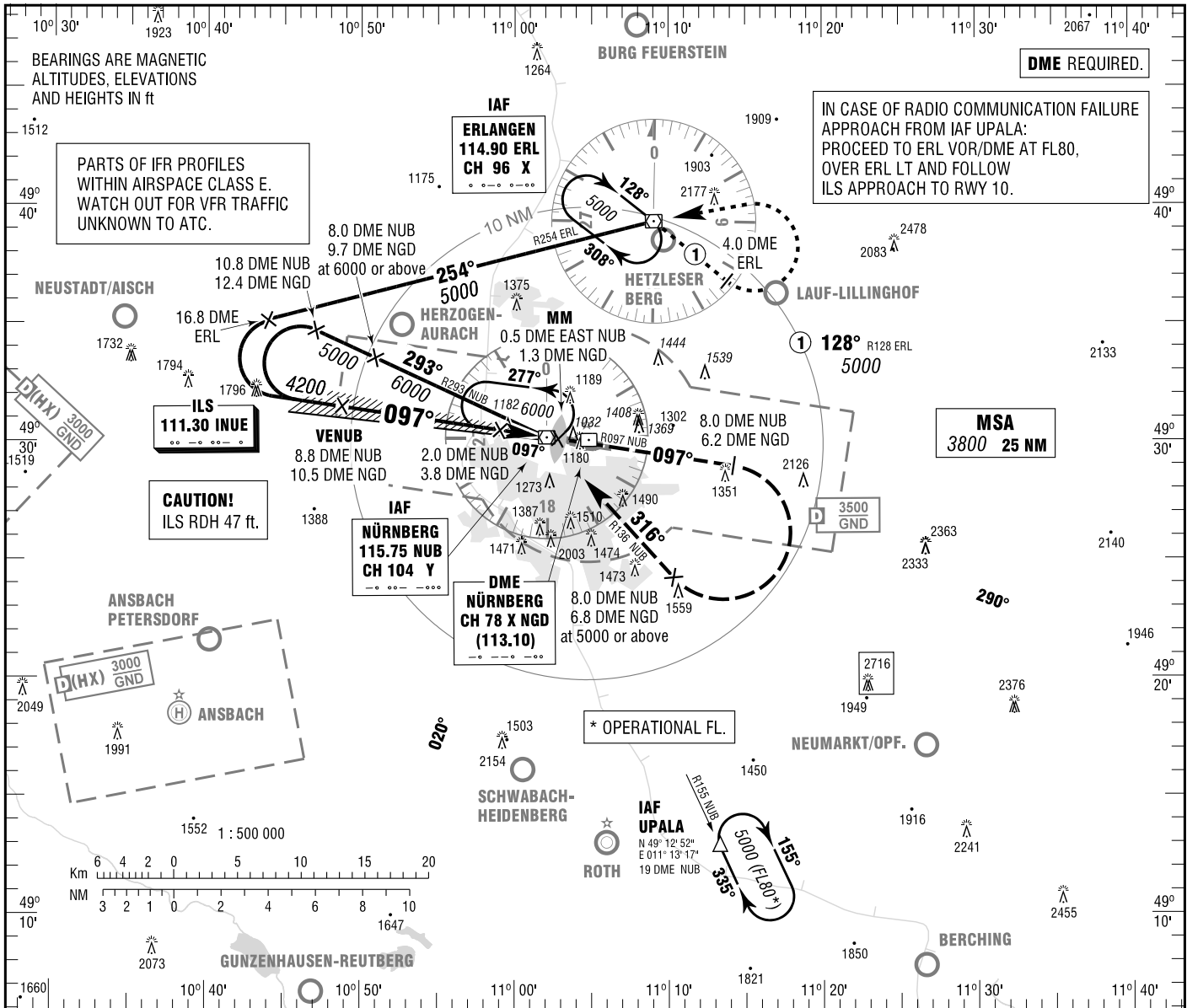
ELEV 1046
OCH RELATED TO
THR 10 ELEV 1022

ATIS
MÜNCHEN RADAR
DIRECTOR

123.075
129.525
119.475

TOWER 118.300
GROUND 118.100
APRON 121.800

**NÜRNBERG
ILS or LOC
RWY 10**



MISSED APPROACH PROCEDURE

Climb on R097 NUB to 8.0 DME NUB (6.2 DME NGD), RT, on R136 NUB to NUB VOR/DME, climbing to 6000. Cross 8.0 DME inbound NUB (6.8 DME NGD) at 5000 or above. Climb with 3.5% (213 ft/NM) or more until passing 5000 due to airspace structure.

PROFILE SCALE 1 : 250 000
ft 4000 3000 2000 1660
NM 14 13 12 11 10 9 8 7 6 5 4 3 2 1 0 1 2 3 4 5 6 NM

OCA (OCH)	A	B	C	D
ILS-DME CAT I	1164 (142)	1174 (152)	1184 (162)	1194 (172)
LOC-DME	1430 (410)	1430 (410)	1430 (410)	1430 (410)
CIRCLING * OCH RELATED TO AD ELEV	1670 (620)	1720 (670)	1840 (800)	1940 (890)

DME NUB	8	7	6	5	4	3	2	1
DIST THR	9	8	7	6	5	4	3	2
ALTITUDE	3940	3620	3300	2980	2670	2350	2030	1710

LOC-DME: Timing not authorized for defining the MAPt.

GS	kt	80	100	120	140	160	180
2.0 DME NUB - THR (3.0 NM)	MIN:SEC	2:15	1:48	1:30	1:17	1:08	1:00
Rate of descent (5.2%)	ft / MIN	420	530	640	740	850	960

Correction: MSA, note added.

* NORTH OF AERODROME ONLY.