

**INSTRUMENT  
APPROACH  
CHART - ICAO**

VAR 2° E

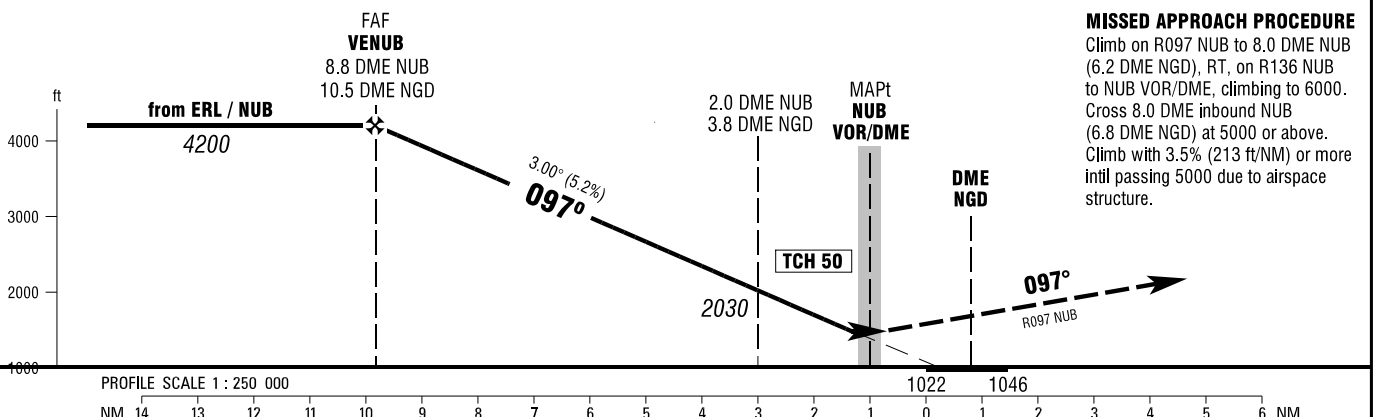
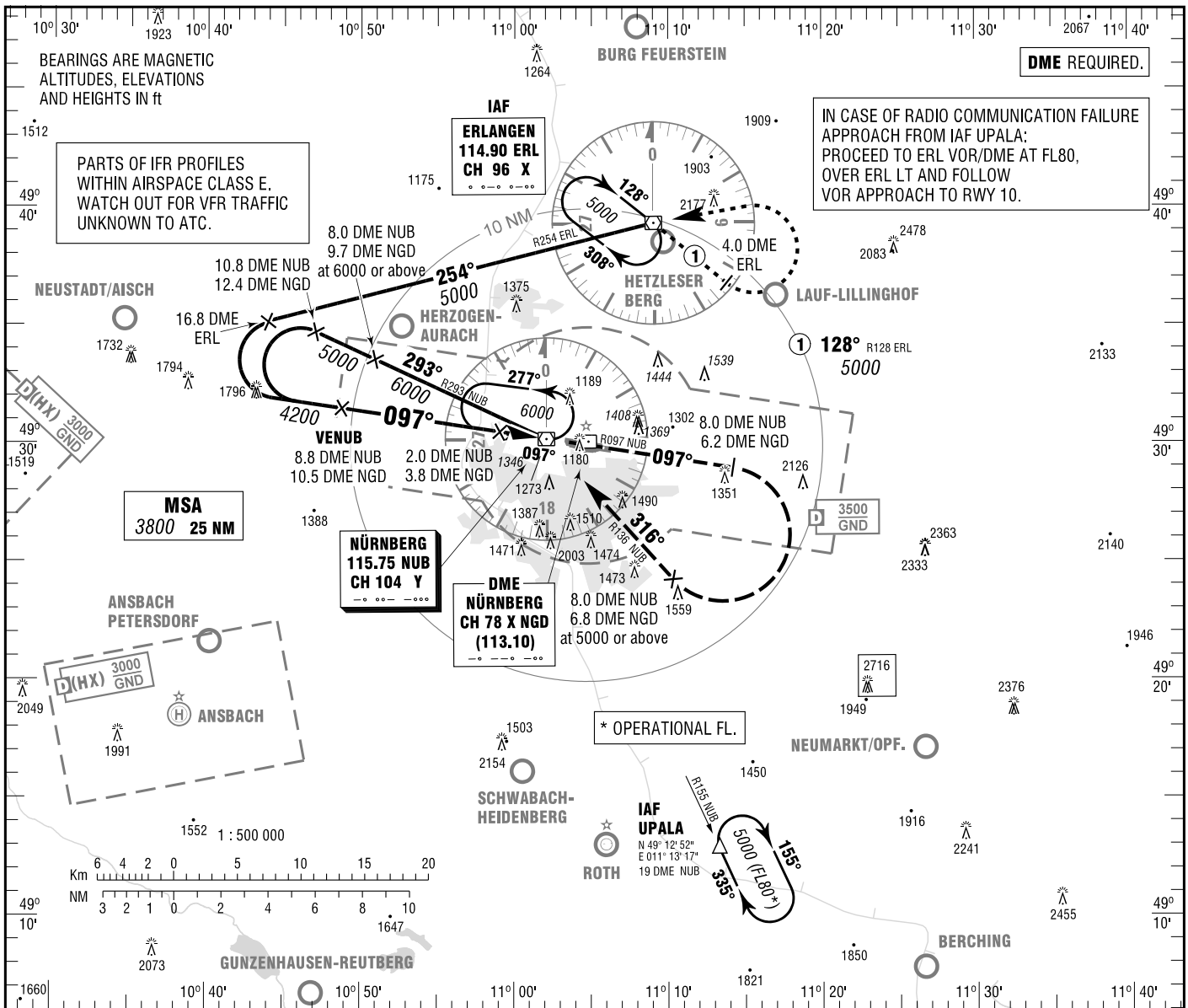
ELEV 1046  
OCH RELATED TO  
THR 10 ELEV 1022

ATIS  
MÜNCHEN RADAR  
DIRECTOR

123.075  
129.525  
119.475

TOWER 118.300  
GROUND 118.100  
APRON 121.800

**NÜRNBERG  
VOR  
RWY 10**



**MISSED APPROACH PROCEDURE**  
Climb on R097 NUB to 8.0 DME NUB (6.2 DME NGD), RT, on R136 NUB to NUB VOR/DME, climbing to 6000. Cross 8.0 DME inbound NUB (6.8 DME NGD) at 5000 or above. Climb with 3.5% (213 ft/NM) or more until passing 5000 due to airspace structure.

OCA (OCH)	A	B	C	D
VOR/DME	1530 (510)	1530 (510)	1530 (510)	1530 (510)
CIRCLING* OCH RELATED TO AD ELEV	1670 (620)	1720 (670)	1840 (800)	1940 (890)

DME NUB	8	7	6	5	4	3	2	1
DIST THR	9	8	7	6	5	4	3	2
ALTITUDE	3940	3620	3310	2990	2670	2350	2030	1710

Timing not authorized for defining the MAPt.

GS	kt	80	100	120	140	160	180
2.0 DME NUB - NUB (2.0 NM)	MIN:SEC	1:30	1:12	1:00	0:51	0:45	0:40
Rate of descent (5.2%)	ft / MIN	420	530	640	740	850	960

\*NORTH OF AERODROME ONLY.

Correction: MSA, note added.