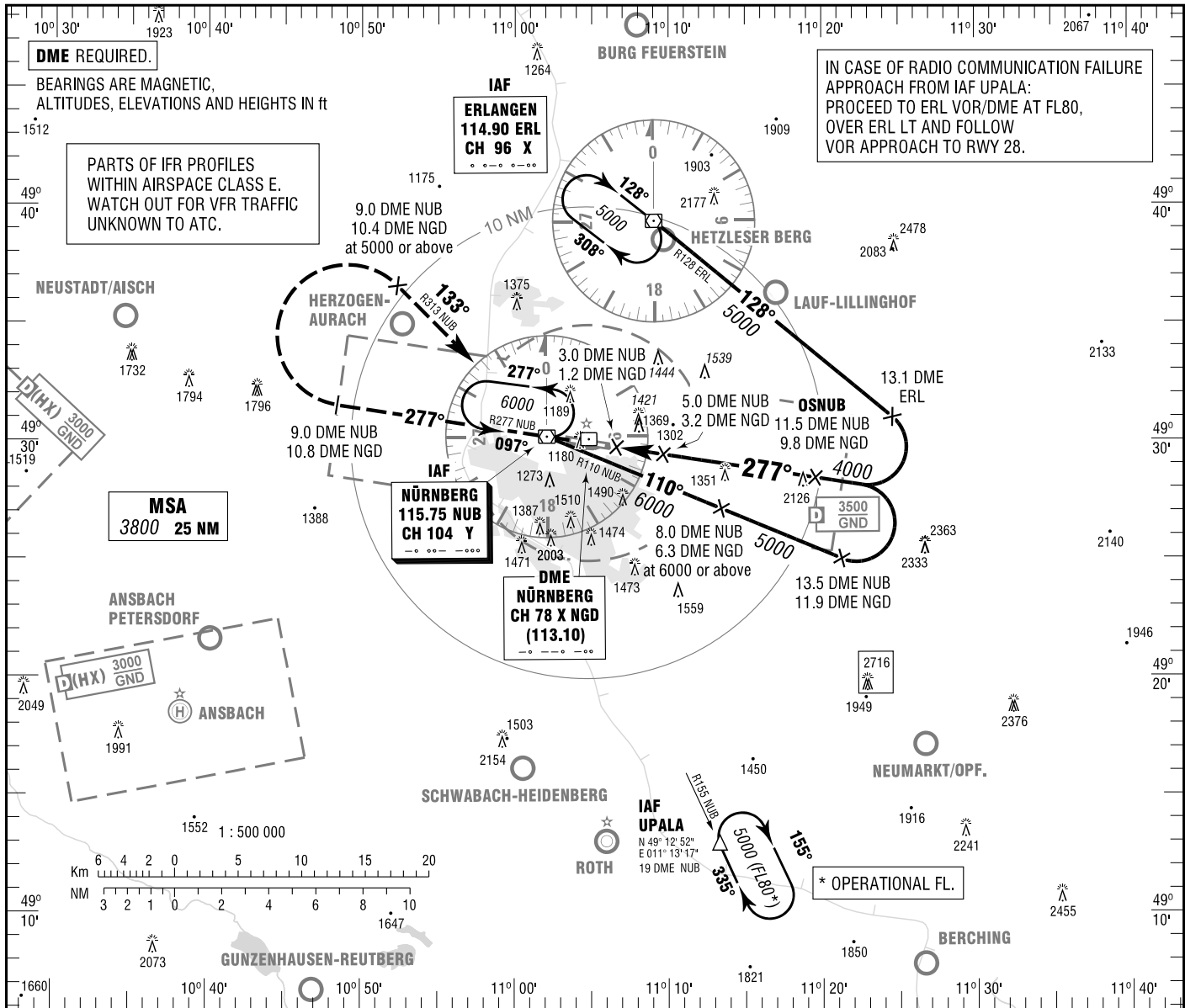


NÜRNBERG
VOR
RWY 28

ATIS 123.075 TOWER 118.300
MÜNCHEN RADAR 129.525 GROUND 118.100
DIRECTOR 119.475 APRON 121.800

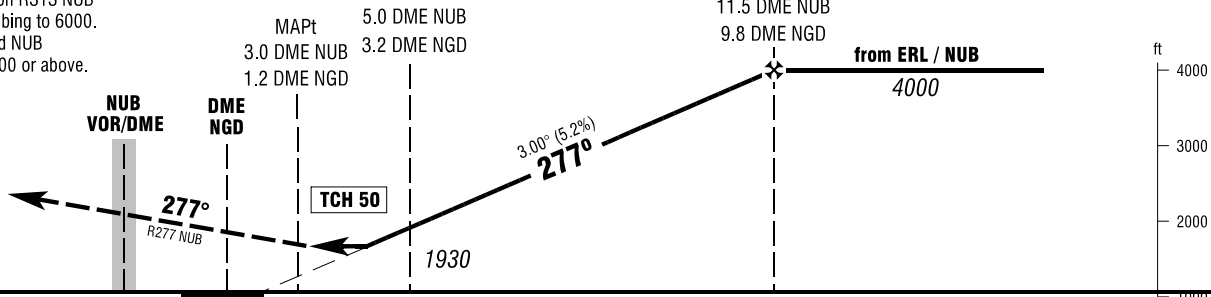
ELEV 1046
OCH RELATED TO VAR 2° E
THR 28 ELEV 1046

**INSTRUMENT
APPROACH
CHART - ICAO**



MISSED APPROACH PROCEDURE

Climb on R277 NUB to 9.0 DME NUB (10.8 DME NGD), RT, on R313 NUB to NUB VOR/DME, climbing to 6000. Cross 9.0 DME inbound NUB (10.4 DME NGD) at 5000 or above.



1022 1046 PROFILE SCALE 1 : 250 000

OCA (OCH)	A	B	C	D
VOR/DME	1670 (620)	1670 (620)	1670 (620)	1670 (620)
CIRCLING* OCH RELATED TO AD ELEV	1670 (620)	1720 (670)	1840 (800)	1940 (890)

DME NUB	4	5	6	7	8	9	10	11
DIST THR	1.6	2.6	3.6	4.6	5.6	6.6	7.6	8.6
ALTITUDE	1610	1930	2250	2570	2880	3200	3520	3840

Timing not authorized for defining the MAPt.

GS	kt	80	100	120	140	160	180
5.0 DME NUB - 3.0 DME NUB (2.0 NM)	MIN:SEC	1:30	1:12	1:00	0:51	0:45	0:40
Rate of descent (5.2%)	ft / MIN	420	530	640	740	850	960

*NORTH OF AERODROME ONLY.

Correction: MSA, note added, page number, sequence.