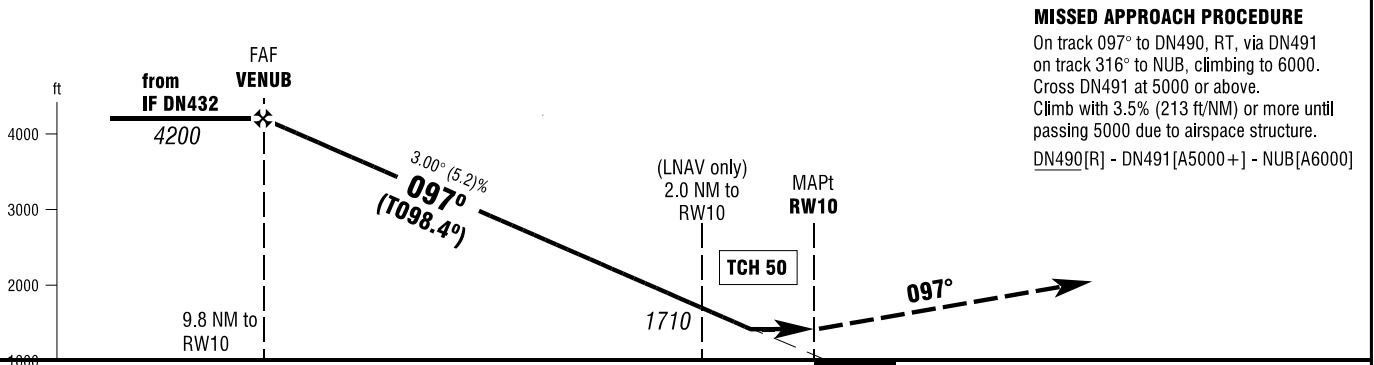
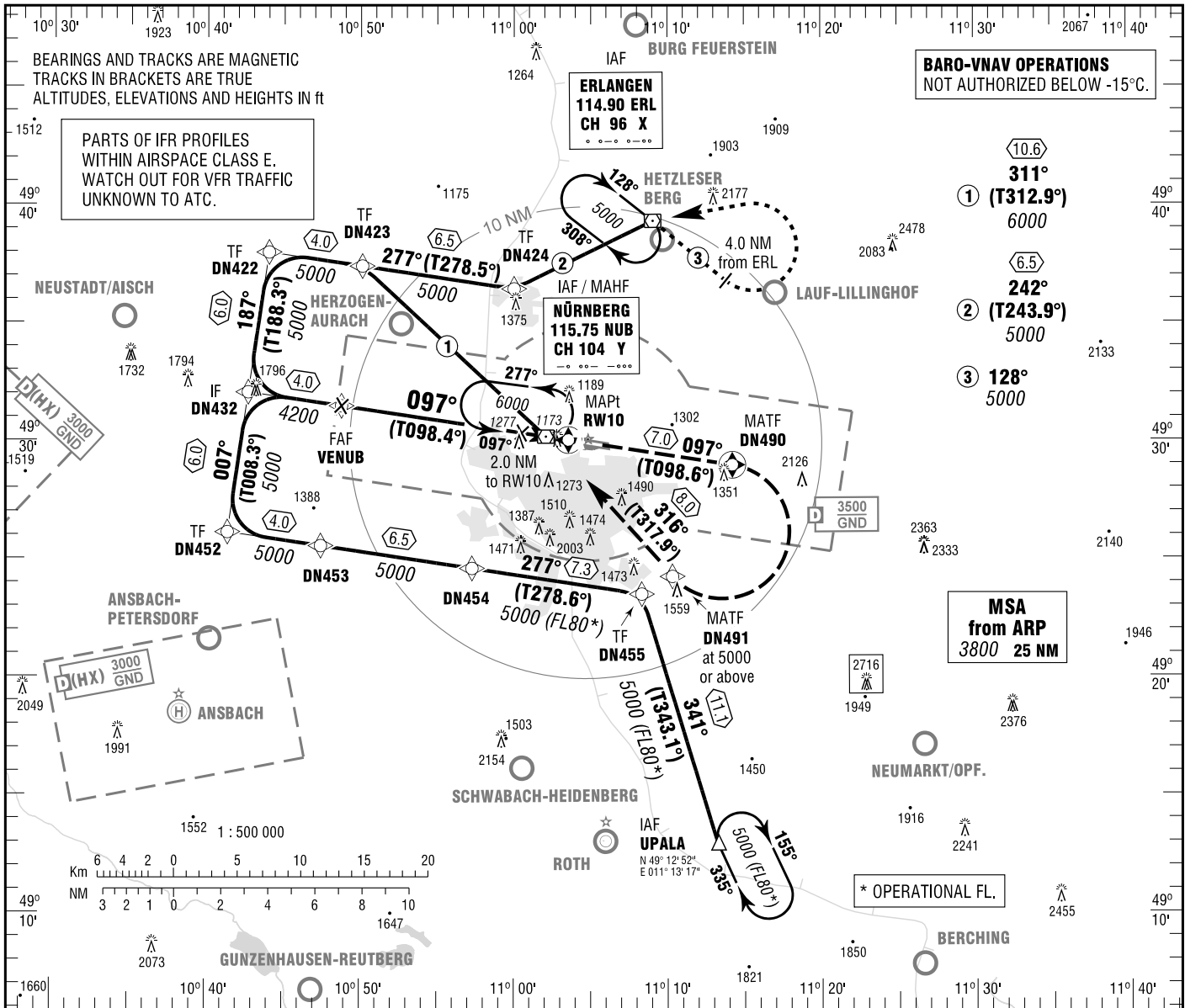


**INSTRUMENT
APPROACH
CHART - ICAO**

VAR 2° E
ELEV 1046
OCH RELATED TO
THR 10 ELEV 1022

ATIS MÜNCHEN RADAR 123.075
MÜNCHEN RADAR 129.525
DIRECTOR 119.475
TOWER 118.300
GROUND 118.100
APRON 121.800

**NÜRNBERG
RNAV (GPS)
RWY 10**



MISSED APPROACH PROCEDURE
On track 097° to DN490, RT, via DN491 on track 316° to NUB, climbing to 6000. Cross DN491 at 5000 or above. Climb with 3.5% (213 ft/NM) or more until passing 5000 due to airspace structure. DN490[R] - DN491[A5000+] - NUB[A6000]

| | NM | | | | | | | | | | |
|--|----|----|----|---|---|---|---|---|---|---|---|
| | 12 | 11 | 10 | 9 | 8 | 7 | 6 | 5 | 4 | 3 | 2 |
| OCA (OCH) | | | | | | | | | | | |
| LNAV | | | | | | | | | | | |
| LNAV / VNAV | | | | | | | | | | | |
| DIST THR / RW10 | | | | | | | | | | | |
| ALTITUDE | | | | | | | | | | | |
| Timing not authorized for defining the MAPt. | | | | | | | | | | | |
| GS | | | | | | | | | | | |
| VENUB - RW10 (9.8 NM) | | | | | | | | | | | |
| Rate of descent (5.2%) | | | | | | | | | | | |

Correction: Note added, sequence.