

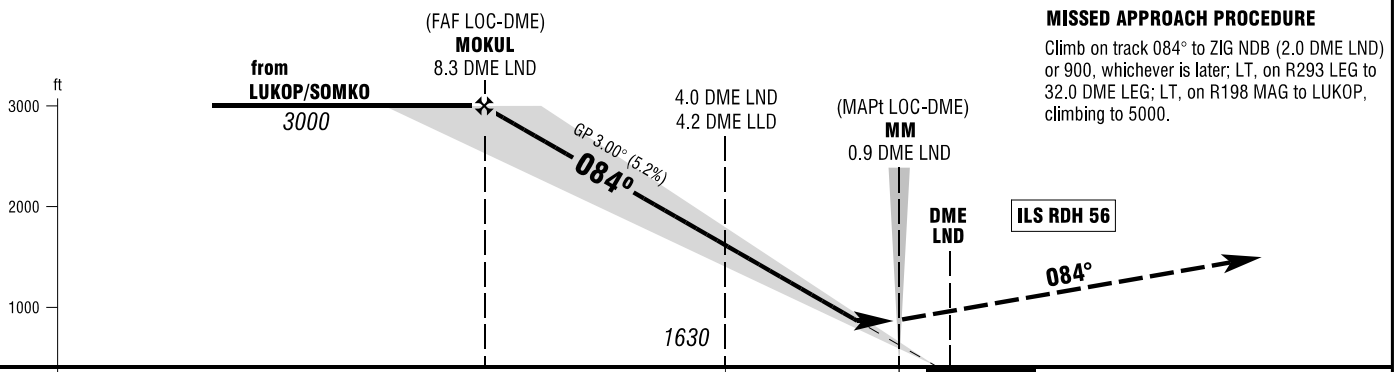
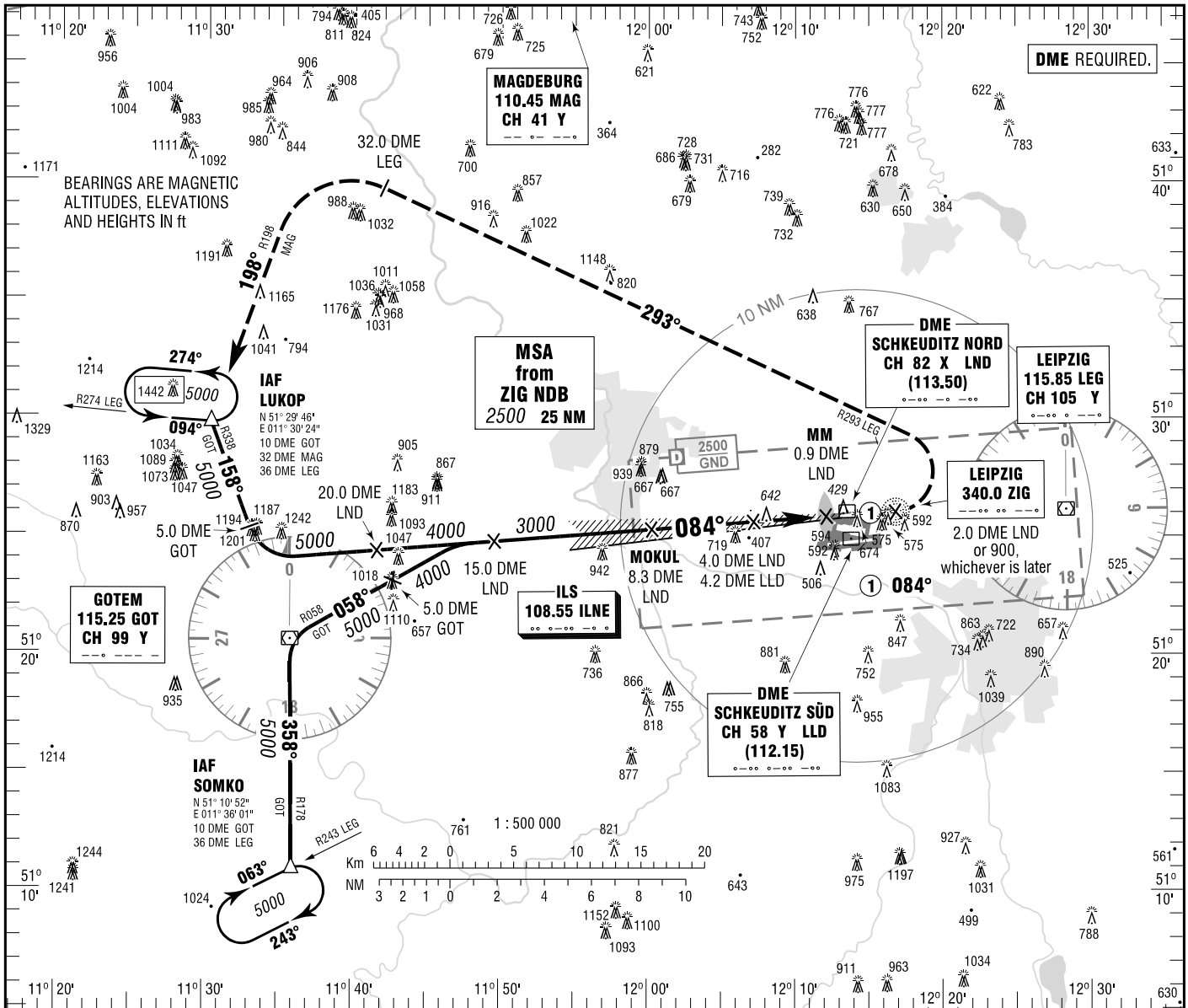
**INSTRUMENT APPROACH CHART - ICAO**

VAR 2° E

ELEV 470  
OCH RELATED TO  
THR 08L ELEV 418

LEIPZIG ATIS	123.950	LEIPZIG TOWER (S)	121.100
MÜNCHEN RADAR	126.175	LEIPZIG GROUND	121.675
LEIPZIG DIRECTOR	128.475	LEIPZIG DELIVERY	121.800
LEIPZIG TOWER (N)	125.950		

**LEIPZIG/HALLE**  
ILS CAT II & III or LOC  
RWY 08L



**MISSED APPROACH PROCEDURE**  
Climb on track 084° to ZIG NDB (2.0 DME LND) or 900, whichever is later; LT, on R293 LEG to 32.0 DME LEG; LT, on R198 MAG to LUKOP, climbing to 5000.

OCA (OCH)	A	B	C	D	D <sub>L</sub>
ILS-DME CAT I	560 (142)	570 (152)	580 (162)	590 (172)	
ILS-DME CAT II	472 (54)	488 (70)	501 (83)	514 (96)	
LOC-DME	890 (470)	890 (470)	890 (470)	890 (470)	

	8	7	6	5	4	3	2
DME LND							
DIST THR	7.6	6.6	5.6	4.6	3.6	2.6	1.6
ALTITUDE	2900	2580	2260	1940	1630	1310	990

**LOC-DME: Timing not authorized for defining the MAPt.**

GS	kt	80	100	120	140	160	180
4.0 DME LND - THR (3.6 NM)	MIN:SEC	2:42	2:10	1:48	1:33	1:21	1:12
Rate of descent (5.2%)	ft / MIN	420	530	640	740	850	960

CAT IIIA AND CAT IIIB (MNM RVR 75M) APPROVED.

Correction: Missed approach.