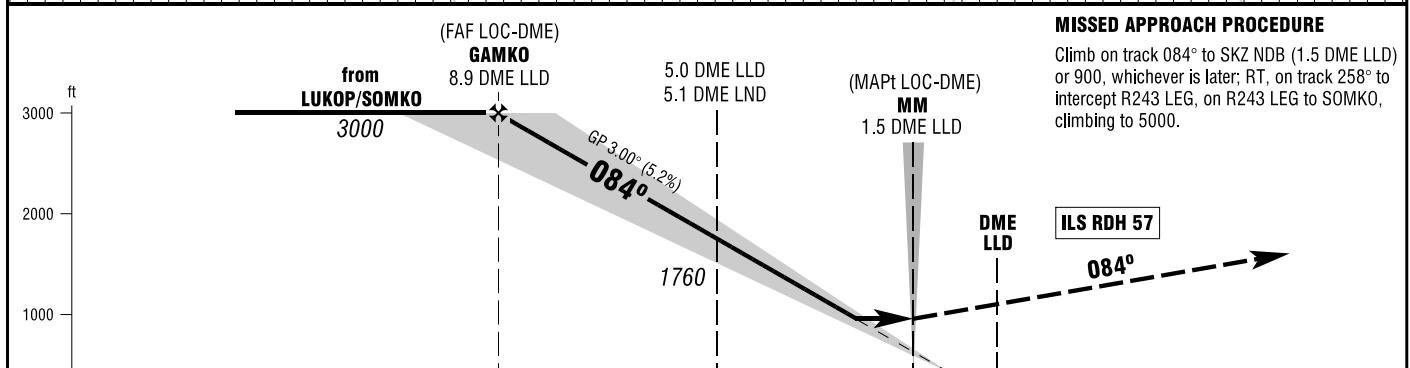
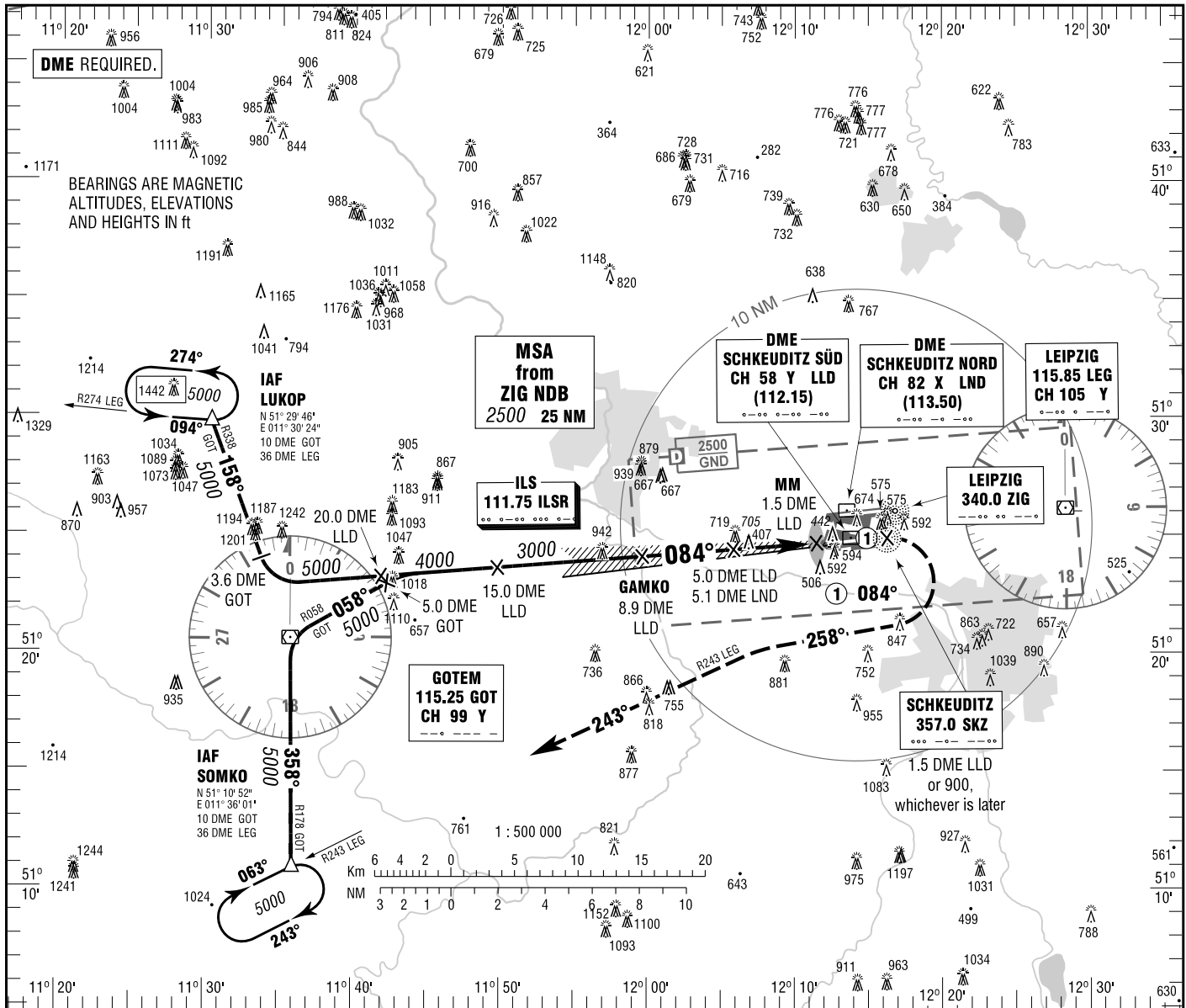


LEIPZIG/HALLE  
ILS CAT II & III or LOC  
RWY 08R

LEIPZIG ATIS 123.950 LEIPZIG TOWER (S) 121.100  
MÜNCHEN RADAR 126.175 LEIPZIG GROUND 121.675  
LEIPZIG DIRECTOR 128.475 LEIPZIG DELIVERY 121.800  
LEIPZIG TOWER (N) 125.950

ELEV 470  
OCH RELATED TO VAR 2° E  
THR 08R ELEV 428

INSTRUMENT  
APPROACH  
CHART - ICAO



**MISSED APPROACH PROCEDURE**

Climb on track 084° to SKZ NDB (1.5 DME LLD) or 900, whichever is later; RT, on track 258° to intercept R243 LEG, on R243 LEG to SOMKO, climbing to 5000.

OCA (OCH)	A	B	C	D	D <sub>t</sub>
ILS-DME CAT I	574 (146)	583 (155)	593 (165)	603 (175)	
ILS-DME CAT II	485 (57)	501 (73)	515 (87)	527 (99)	
LOC-DME	960 (530)	960 (530)	960 (530)	960 (530)	

DME LLD	8	7	6	5	4	3
DIST THR	7	6	5	4	3	2
ALTITUDE	2720	2400	2080	1760	1450	1130

**LOC-DME:** Timing not authorized for defining the MAPt.

GS	kt	80	100	120	140	160	180
5.0 DME LLD-THR (4.0 NM)	MIN:SEC	3:00	2:24	2:00	1:43	1:30	1:20
Rate of descent (5.2%)	ft / MIN	420	530	640	740	850	960

CAT IIIA AND CAT IIIB (MNM RVR 75M) APPROVED.

Correction: MSA, OCA(H) values, obstacles.