

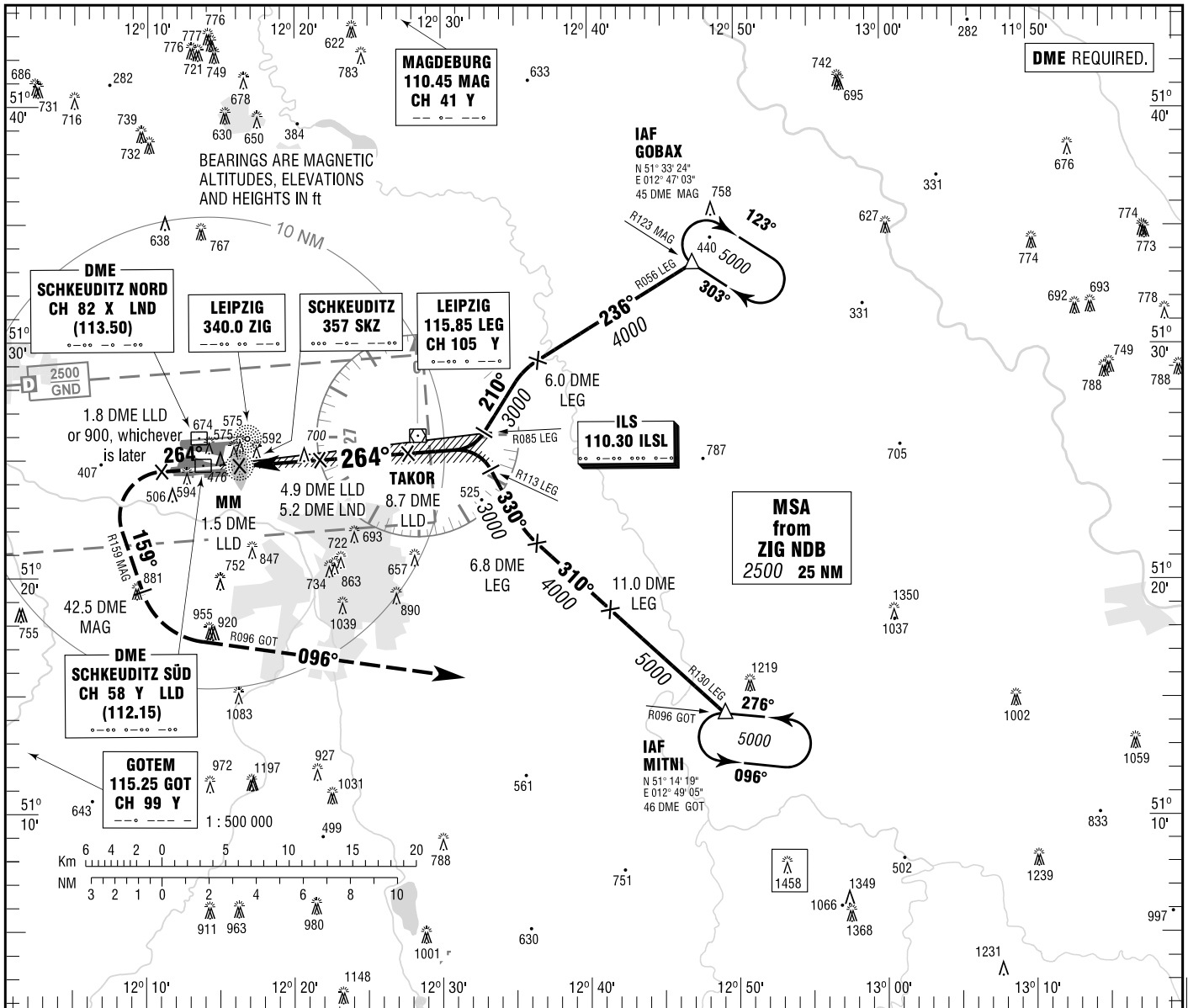
**INSTRUMENT APPROACH CHART - ICAO**

VAR 2° E

ELEV 470  
OCH RELATED TO  
THR 26L ELEV 470

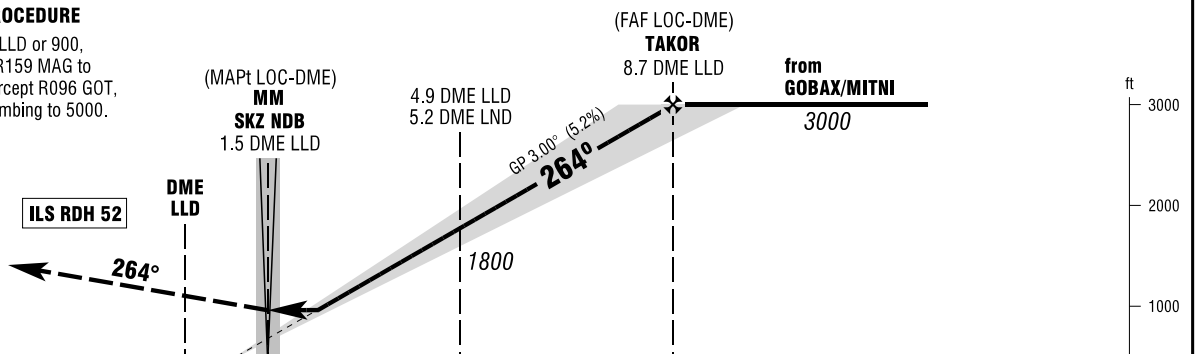
LEIPZIG ATIS	123.950	LEIPZIG TOWER (S)	121.100
MÜNCHEN RADAR	126.175	LEIPZIG GROUND	121.675
LEIPZIG DIRECTOR	128.475	LEIPZIG DELIVERY	121.800
LEIPZIG TOWER (N)	125.950		

**LEIPZIG/HALLE**  
ILS CAT II & III or LOC  
RWY 26L



**MISSED APPROACH PROCEDURE**

On track 264° to 1.8 DME LLD or 900, whichever is later; LT, on R159 MAG to 42.5 DME MAG; LT to intercept R096 GOT, on R096 GOT to MITNI, climbing to 5000.



NM 6 5 4 3 2 1 0 1 2 3 4 5 6 7 8 9 10 11 12 13 14 NM

OCA (OCH)	A	B	C	D	D <sub>L</sub>
ILS-DME CAT I	607 (137)	617 (147)	627 (157)	637 (167)	
ILS-DME CAT II	519 (49)	535 (65)	548 (78)	562 (92)	
LOC-DME	950 (480)	950 (480)	950 (480)	950 (480)	

DME LLD	3	4	5	6	7	8
DIST THR	2.1	3.1	4.1	5.1	6.1	7.1
ALTITUDE	1200	1510	1830	2150	2470	2790

**LOC-DME:** Timing not authorized for defining the MAPt.

GS	kt	80	100	120	140	160	180
4.9 DME LLD-THR (4.0 NM)	MIN:SEC	3:00	2:24	2:00	1:43	1:30	1:20
Rate of descent (5.2%)	ft / MIN	420	530	640	740	850	960

CAT IIIA AND CAT IIIB (MNM RVR 75M) APPROVED.

Correction: Procedure.