

**INSTRUMENT APPROACH CHART - ICAO**

VAR 2° E

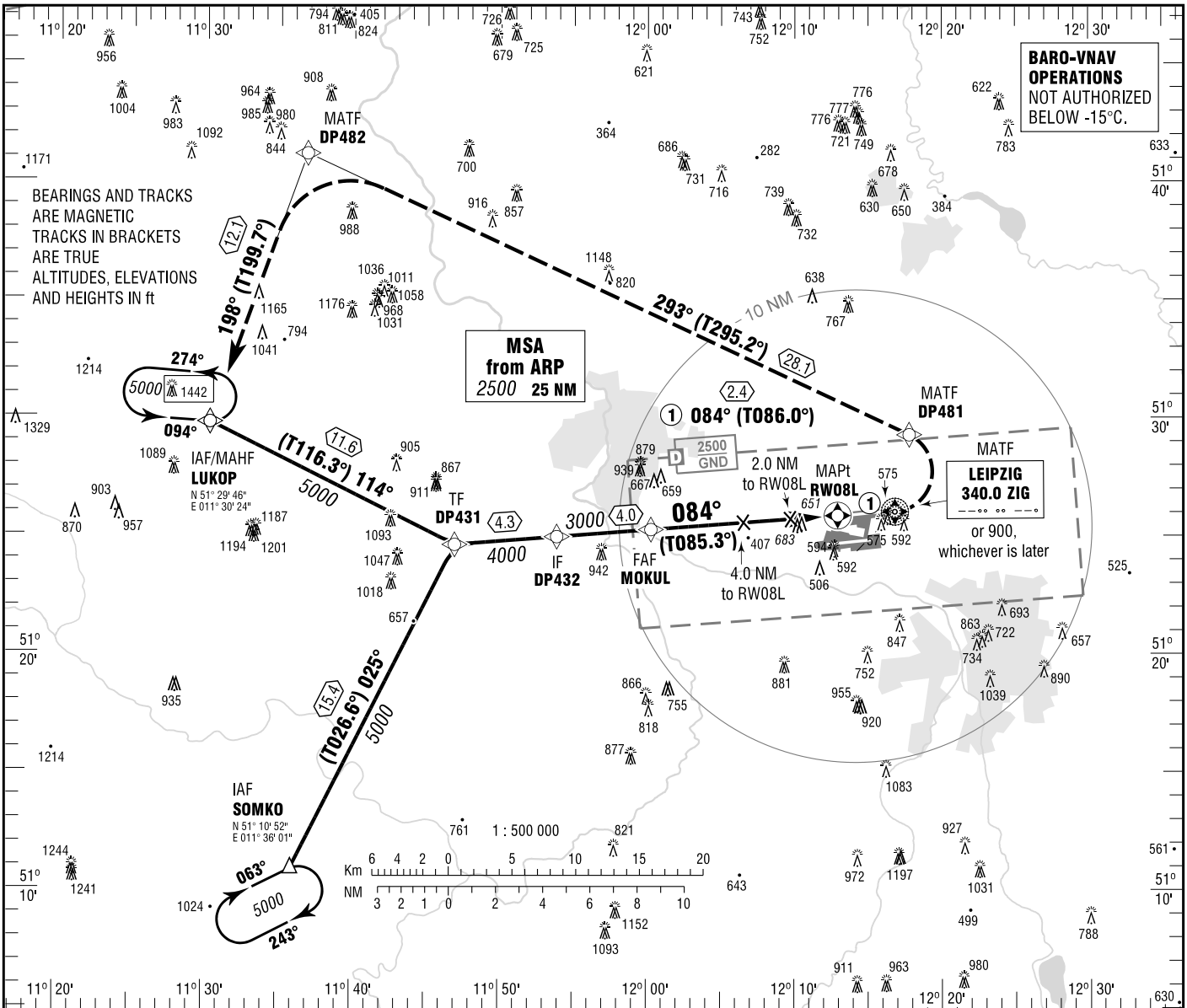
ELEV 470  
OCH RELATED TO  
THR 08L ELEV 418

|                   |         |                   |         |
|-------------------|---------|-------------------|---------|
| LEIPZIG ATIS      | 123.950 | LEIPZIG TOWER (S) | 121.100 |
| MÜNCHEN RADAR     | 126.175 | LEIPZIG GROUND    | 121.675 |
| LEIPZIG DIRECTOR  | 128.475 | LEIPZIG DELIVERY  | 121.800 |
| LEIPZIG TOWER (N) | 125.950 |                   |         |

**LEIPZIG/HALLE  
RNAV (GPS)  
RWY 08L**

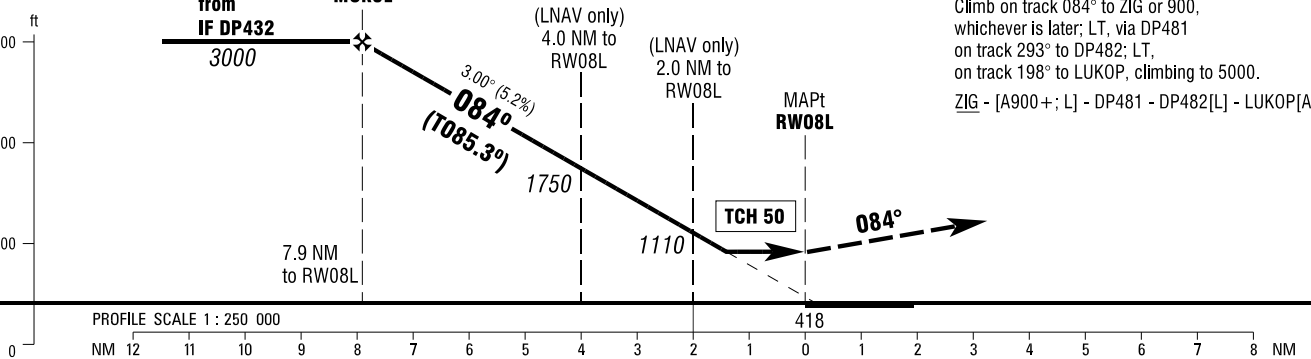
**BARO-VNAV OPERATIONS  
NOT AUTHORIZED  
BELOW -15°C.**

BEARINGS AND TRACKS  
ARE MAGNETIC  
TRACKS IN BRACKETS  
ARE TRUE  
ALTITUDES, ELEVATIONS  
AND HEIGHTS IN ft



**MISSED APPROACH PROCEDURE  
RNAV (GPS)**

Climb on track 084° to ZIG or 900, whichever is later; LT, via DP481 on track 293° to DP482; LT, on track 198° to LUKOP, climbing to 5000.  
ZIG - [A900+; L] - DP481 - DP482[L] - LUKOP[A5000]



| OCA (OCH)   | A         | B         | C         | D         |
|-------------|-----------|-----------|-----------|-----------|
| LNAV        | 920 (510) | 920 (510) | 920 (510) | 920 (510) |
| LNAV / VNAV | 870 (450) | 870 (450) | 870 (450) | 870 (450) |

| DIST THR / RW08L | 7    | 6    | 5    | 4    | 3    | 2    |
|------------------|------|------|------|------|------|------|
| ALTITUDE         | 2700 | 2380 | 2060 | 1750 | 1430 | 1110 |

Timing not authorized for defining the MAPt.

| GS                     | kt       | 80   | 100  | 120  | 140  | 160  | 180  |
|------------------------|----------|------|------|------|------|------|------|
| MOKUL - RW08L (7.9 NM) | MIN:SEC  | 5:56 | 4:44 | 3:57 | 3:23 | 2:58 | 2:38 |
| Rate of descent (5.2%) | ft / MIN | 420  | 530  | 640  | 740  | 850  | 960  |

Correction: NON-RNAV missed approach withdrawn.