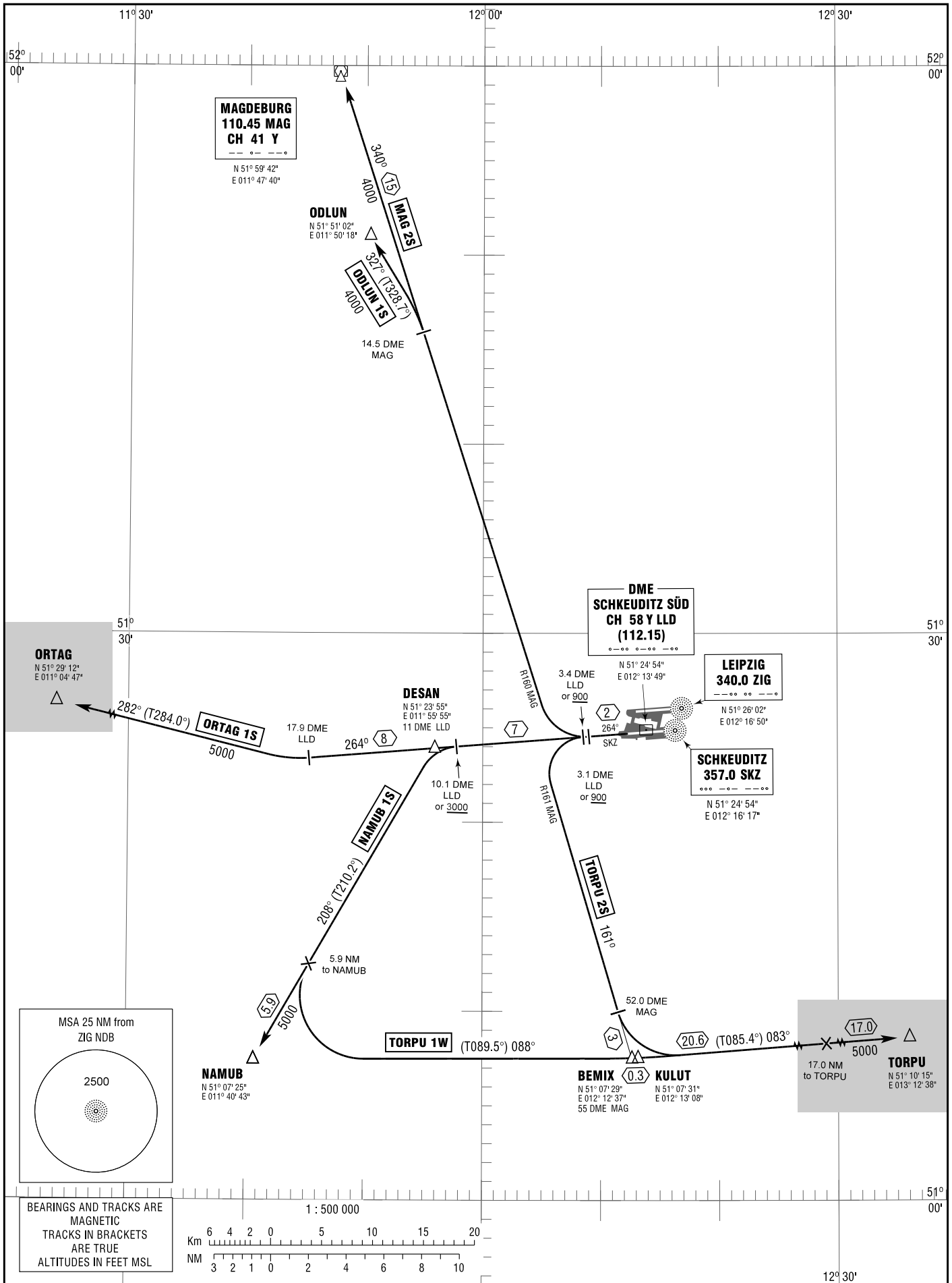


STANDARD DEPARTURE
CHART - INSTRUMENT
(SID)

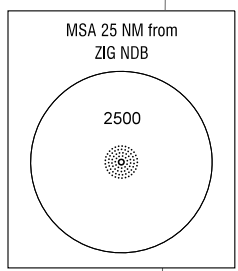
TRANSITION
ALTITUDE 5000
VAR 2° E

LEIPZIG ATIS	123.950	LEIPZIG TOWER (N)	125.950
LEIPZIG DELIVERY	121.800	(S)	121.100
LEIPZIG GROUND	121.675	MÜNCHEN RADAR	126.175

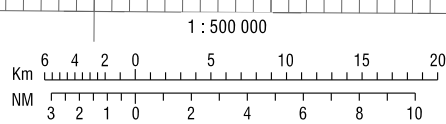
LEIPZIG/HALLE
RWY 26L



Correction: MSA.



BEARINGS AND TRACKS ARE
MAGNETIC
TRACKS IN BRACKETS
ARE TRUE
ALTITUDES IN FEET MSL



STANDARD DEPARTURE
ROUTES – INSTRUMENT
(SID)LEIPZIG/HALLE
RWY 26L

Designator	Route	After Take-Off		Remarks
		Climb to	Contact	
1	2	3	4	5
MAG 2S	MAGDEBURG TWO SIERRA On RWY track to 3.1 DME LLD or 900, whichever is later, RT, on R160 MAG to MAG (Δ). Climb with 7.0% (425 ft/NM) or more until passing 2000. MAX IAS 210 kt until established on R160 MAG.	FL 70	München Radar 126.175	<ol style="list-style-type: none"> Will be assigned for NON-RNAV equipped aircraft by ATC only. RNAV equipped aircraft shall file SID ODLUN - Y235 - MAG. No access to (U)Z20 and UN746. No access to (U)L986, except NON-PRNAV equipped aircraft. PDG due to navaid coverage (MAG). If unable to comply advise ATC.
NAMUB 1S	NAMUB ONE SIERRA On track 264° SKZ to 10.1 DME LLD or 3000, whichever is later, LT, on track 208° to NAMUB (Δ). GPS/FMS RNAV: [A900+] - DESAN[A3000+; L] - NAMUB.			When passing 3000 BRNAV equipment necessary. If unable to comply request ALTN route by ATC.
ODLUN 1S	ODLUN ONE SIERRA On RWY track to 3.1 DME LLD or 900, whichever is later, RT, on R160 MAG to 14.5 DME MAG; LT, on track 327° to ODLUN (Δ). Climb with 7.0% (425 ft/NM) or more until passing 2000. MAX IAS 210 kt until established on R160 MAG. GPS/FMS RNAV: DP523[A900+; K210-; R] - DP524[L] - ODLUN.			<ol style="list-style-type: none"> After 14.5 DME MAG BRNAV equipment necessary. If unable to comply request ALTN route by ATC. PDG due to navaid coverage (MAG). If unable to comply advise ATC.
ORTAG 1S	ORTAG ONE SIERRA On track 264° SKZ to 17.9 DME LLD, RT, on track 282° to ORTAG (Δ). GPS/FMS RNAV: [A900+] - DP525[R] - ORTAG.			After 17.9 DME LLD BRNAV equipment necessary. If unable to comply request ALTN route by ATC.
TORPU 2S	TORPU TWO SIERRA On RWY track to 3.4 DME LLD or 900, whichever is later, LT, on R161 MAG to 52.0 DME MAG, LT, on track 083° to TORPU (Δ). Climb with 7.0% (425 ft/NM) or more until passing 2000. MAX IAS 210 kt until established on R161 MAG. GPS/FMS RNAV: DP513[A900+; L] - DP526[K210-] - BEMIX[L] - TORPU.			<ol style="list-style-type: none"> Only available between 0500 (0400) and 2100 (2000). PDG due to navaid coverage (MAG). If unable to comply advise ATC. After 52.0 DME MAG BRNAV equipment necessary. If unable to comply request ALTN route by ATC.
TORPU 1W	TORPU ONE WHISKEY On track 264° SKZ to 10.1 DME LLD or 3000, whichever is later, LT, on track 208° to DP527, LT, via DP528 on track 088° to KULUT (Δ), LT, on track 083° to TORPU (Δ). GPS/FMS RNAV: [A900+] - DESAN[A3000+; L] - DP527[L] - DP528 - KULUT[L] - TORPU.			When passing 3000 BRNAV equipment necessary. If unable to comply request ALTN route by ATC.

Notes: Attention departing aircraft: Simultaneous parallel departures in progress. Pilots have to proceed exactly on extended centreline until starting turns as published in departure routes and shall remain on TWR frequency until further advised.

(DP520 fly-over way point)

Contact München Radar when advised by Tower!