

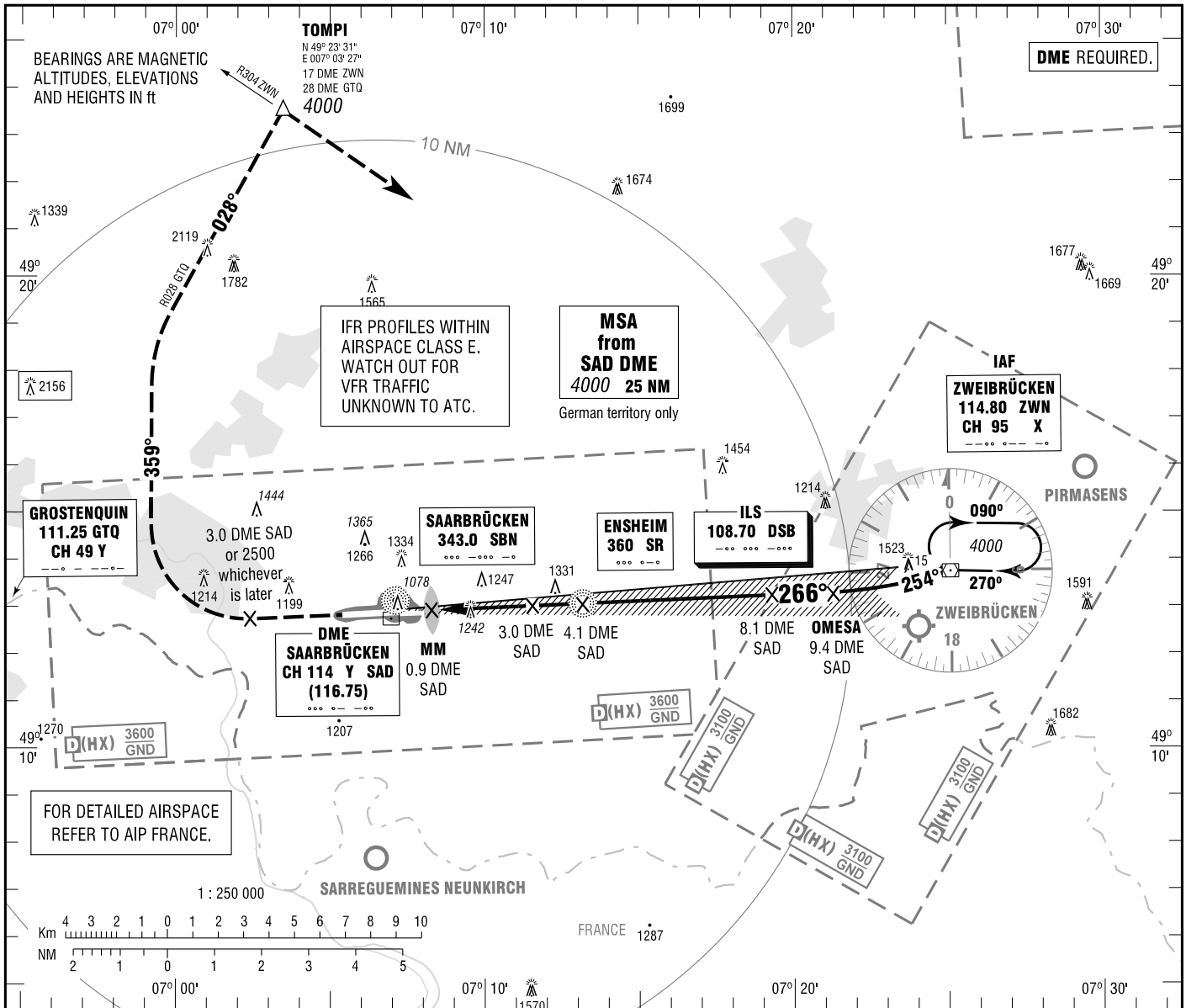
INSTRUMENT
APPROACH
CHART - ICAO

VAR 1°E

ELEV 1058
OCH RELATED TO
THR 27 ELEV 1058

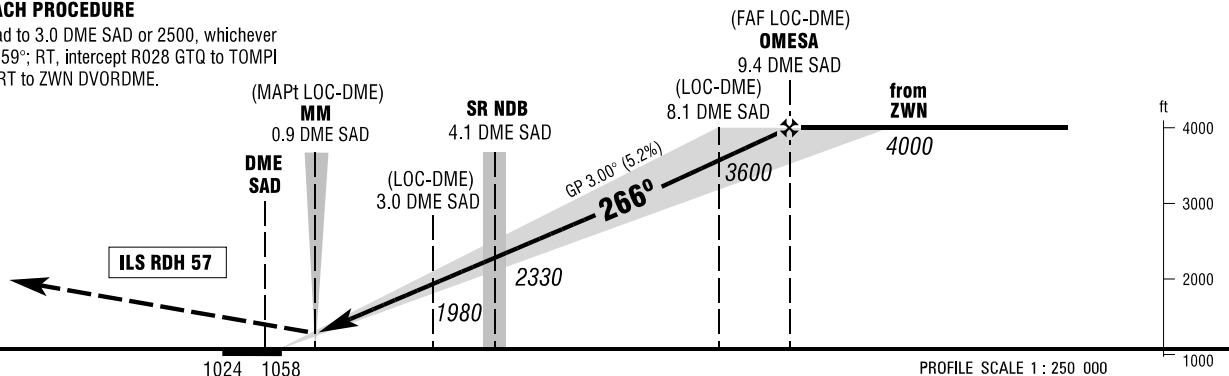
ATIS	125.300
LANGEN RADAR	129.675
TOWER	118.350
	118.550

SAARBRÜCKEN
ILS or LOC
RWY 27



MISSED APPROACH PROCEDURE

Climb straight ahead to 3.0 DME SAD or 2500, whichever is later; RT, track 359°; RT, intercept R028 GTQ to TOMPI climbing to 4000; RT to ZWN DVORDME.



OCA (OCH)	A	B	C	D
ILS-DME CAT I	1209 (151)	1219 (161)	1229 (171)	1239 (181)
LOC-DME	1490 (430)	1490 (430)	1490 (430)	1490 (430)
CIRCLING * OCH RELATED TO AD ELEV	1670 (610)	1670 (610)	1840 (780)	1840 (780)

	2	3	4	5	6	7	8	9
DME SAD								
DIST THR	1.7	2.7	3.7	4.7	5.7	6.7	7.7	8.7
ALTITUDE	1660	1980	2300	2620	2930	3250	3570	3890

LOC-DME: Timing not authorized for defining the MAPt.

GS	kt	80	100	120	140	160	180
4.1 DME SAD - THR (3.8 NM)	MIN:SEC	2:51	2:17	1:54	1:38	1:26	1:16
Rate of descent (5.2%)	ft / MIN	420	530	640	740	850	960

* NORTH OF AERODROME ONLY.

Correction: Obstacle revised, note added, OCA(H) obstacle, values & definition.