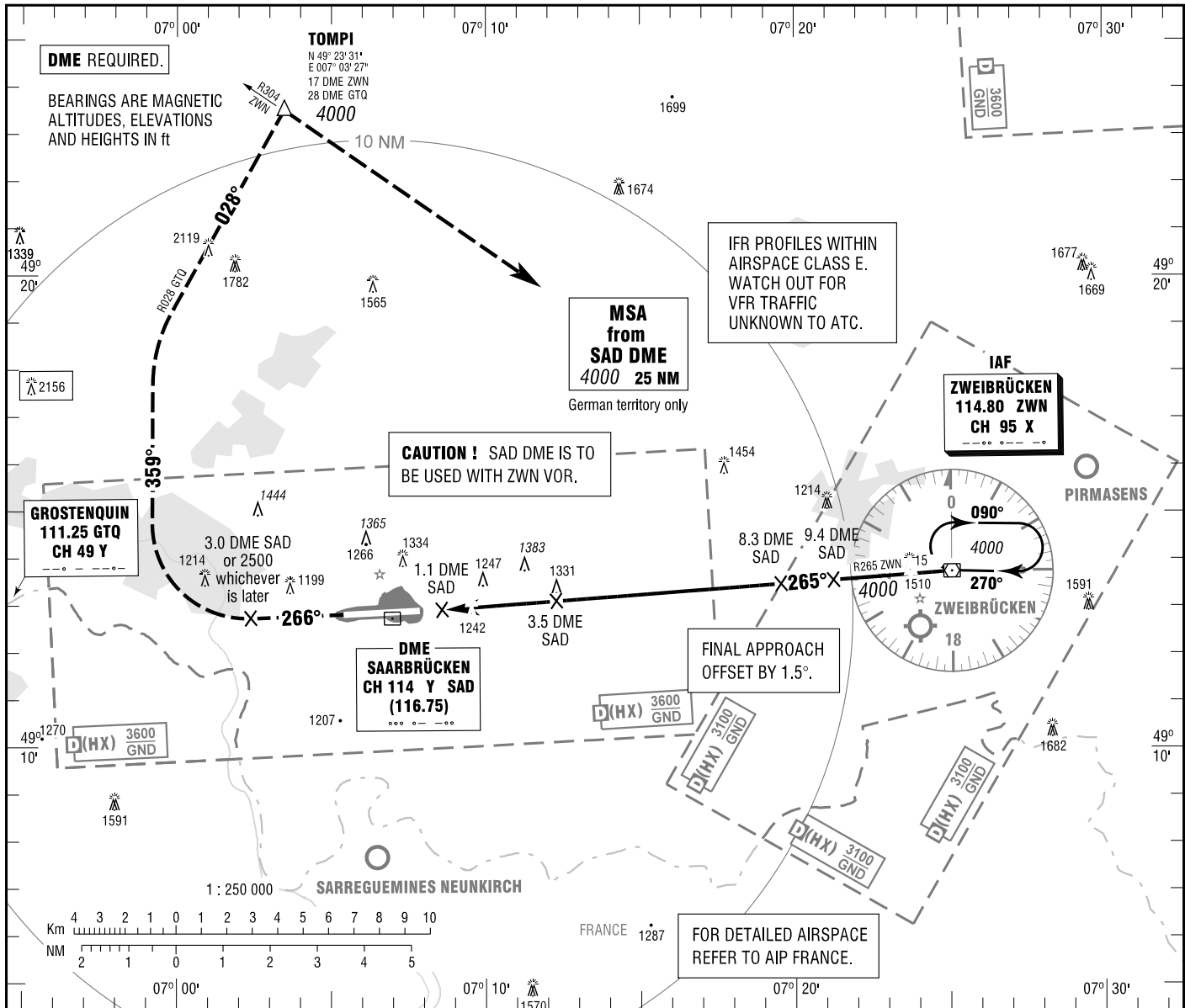


SAARBRÜCKEN
VOR
RWY 27

ATIS 125.300
LANGEN RADAR 129.675
TOWER 118.350
118.550

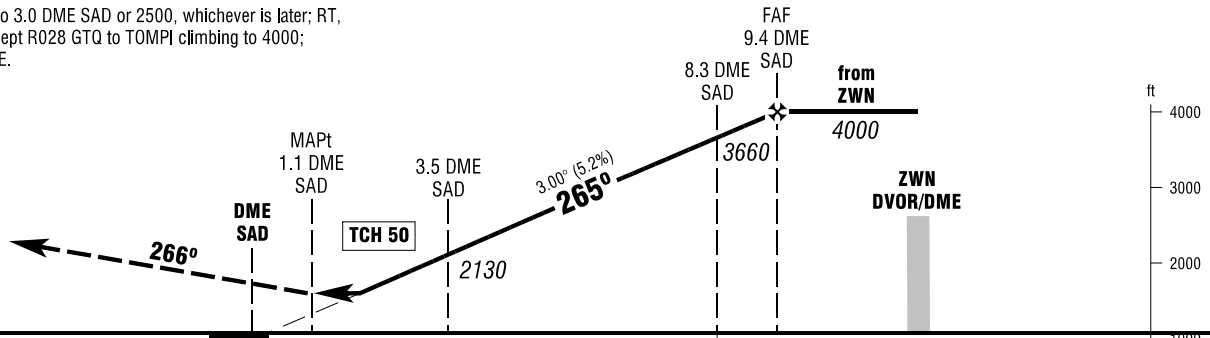
ELEV 1058
OCH RELATED TO VAR 1° E
THR 27 ELEV 1058

INSTRUMENT
APPROACH
CHART - ICAO



MISSED APPROACH PROCEDURE

Climb on track 266° to 3.0 DME SAD or 2500, whichever is later; RT, track 359°; RT, intercept R028 GTQ to TOMPI climbing to 4000; RT to ZWN DVORDME.



OCA (OCH)	A	B	C	D
VOR-DME	1630 (580)	1630 (580)	1630 (580)	1630 (580)
CIRCLING * OCH RELATED TO AD ELEV	1670 (610)	1670 (610)	1840 (780)	1840 (780)

DME SAD	2	3	4	5	6	7	8	9
DIST THR	1.7	2.7	3.7	4.7	5.7	6.7	7.7	8.7
ALTITUDE	1650	1970	2290	2610	2930	3240	3560	3880

Timing not authorized for defining the MAPt.

GS	kt	80	100	120	140	160	180
3.5 DME SAD - MAPt (2.4 NM)	MIN:SEC	1:48	1:26	1:12	1:02	0:54	0:48
Rate of descent (5.2%)	ft / MIN	420	530	640	740	850	960

* NORTH OF AERODROME ONLY.

Correction: Obstacles revised, note added, OCA(H) obstacles, vaueils & definition.