

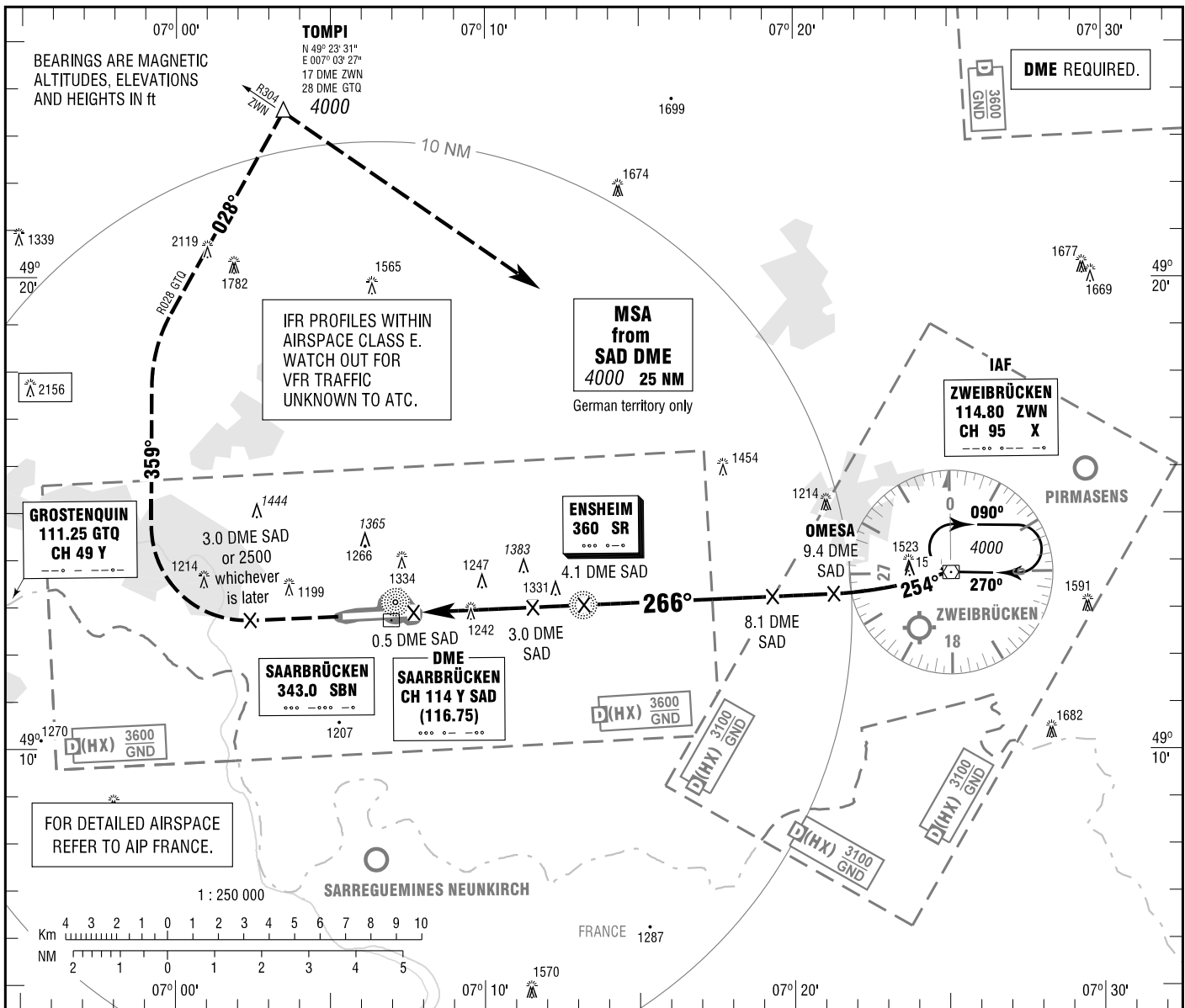
INSTRUMENT  
APPROACH  
CHART - ICAO

VAR 1° E

ELEV 1058  
OCH RELATED TO  
THR 27 ELEV 1058

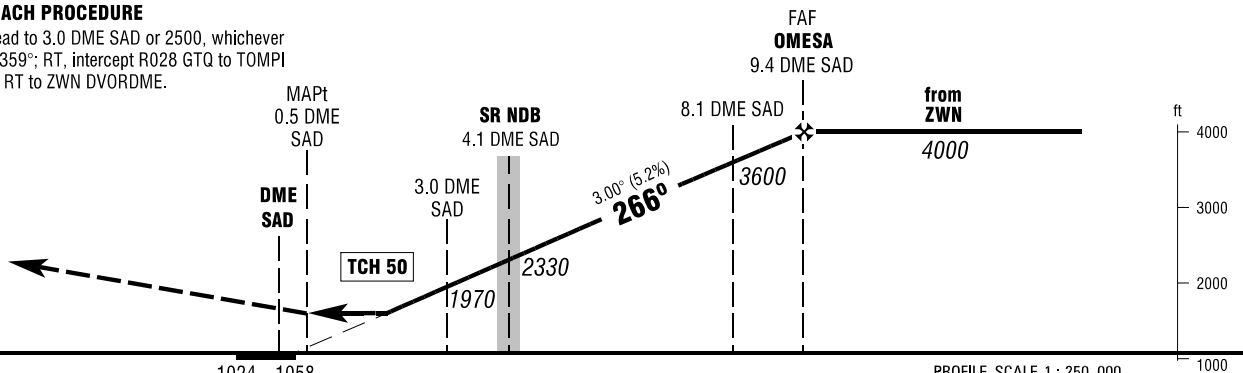
ATIS 125.300  
LANGEN RADAR 129.675  
TOWER 118.350  
118.550

SAARBRÜCKEN  
NDB  
RWY 27



**MISSED APPROACH PROCEDURE**

Climb straight ahead to 3.0 DME SAD or 2500, whichever is later; RT, track 359°; RT, intercept R028 GTQ to TOMPI climbing to 4000; RT to ZWN DVORDME.



OCA (OCH)	A	B	C	D
NDB-DME	1580 (520)	1580 (520)	1580 (520)	1580 (520)
CIRCLING * OCH RELATED TO AD ELEV	1670 (610)	1670 (610)	1840 (780)	1840 (780)

DME SAD	2	3	4	5	6	7	8	9
DIST THR	1.7	2.7	3.7	4.7	5.7	6.7	7.7	8.7
ALTITUDE	1650	1970	2290	2610	2930	3240	3560	3880

Timing not authorized for defining the MAPt.

GS	kt	80	100	120	140	160	180
SR - MAPt (3.6 NM)	MIN:SEC	2:42	2:10	1:48	1:33	1:21	1:12
Rate of descent (5.2%)	ft / MIN	420	530	640	740	850	960

\* NORTH OF AERODROME ONLY.

Correction: Obstacles revised, note added, OCA(H) values, obstacles & definition.