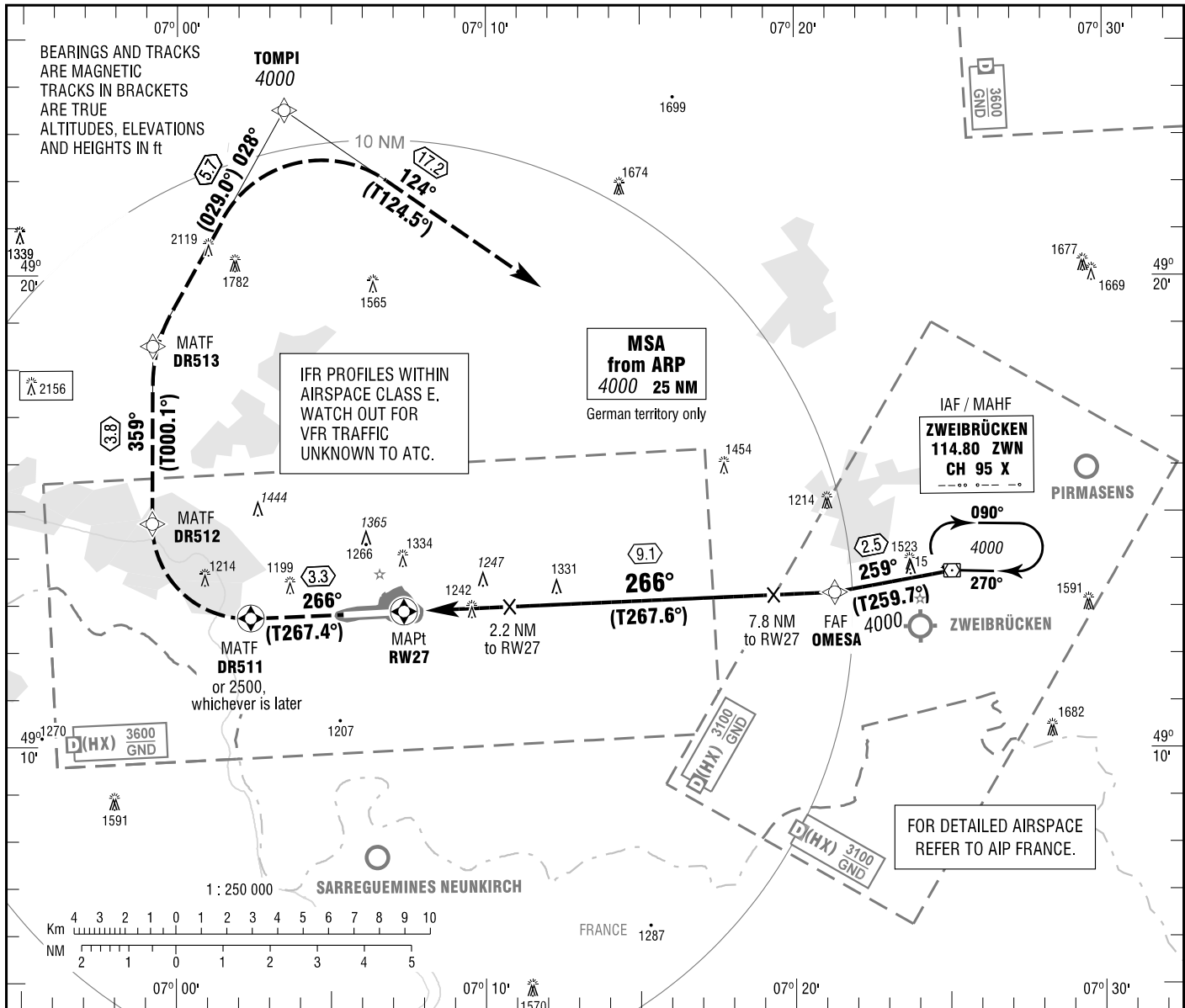


SAARBRÜCKEN
RNAV (GPS)
RWY 27

ATIS 125.300
LANGEN RADAR 129.675
TOWER 118.350
118.550

ELEV 1058
OCH RELATED TO VAR 1° E
THR 27 ELEV 1058

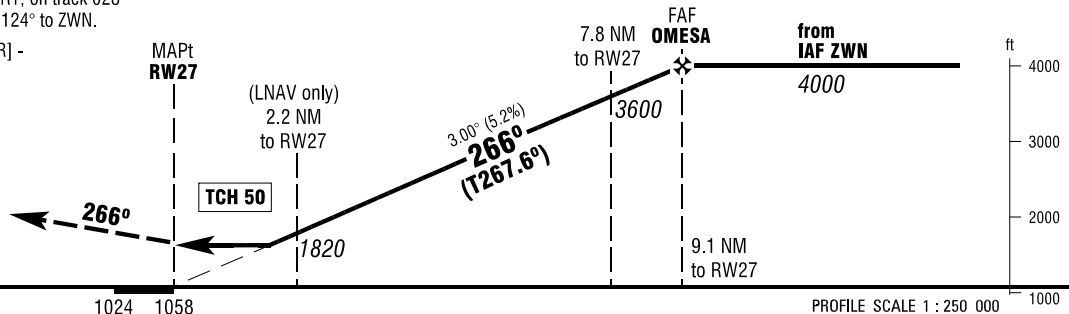
INSTRUMENT
APPROACH
CHART - ICAO



MISSED APPROACH PROCEDURE

Climb on track 266° to DR511 or 2500, whichever is later; RT, via DR512 on track 359° to DR513; RT, on track 028° to TOMPI climbing to 4000; RT on track 124° to ZWN.

DR511 - [A2500; R] - DR512 - DR513[R] - TOMPI[A4000; R] - ZWN



OCA (OCH)	A	B	C	D
LNAV	1500 (440)	1500 (440)	1500 (440)	1500 (440)
CIRCLING * OCH RELATED TO AD ELEV	1670 (610)	1670 (610)	1840 (780)	1840 (780)

DIST THR / RW27	2	3	4	5	6	7	8	9
ALTITUDE	1750	2070	2380	2700	3020	3340	3660	3980

Timing not authorized for defining the MAPt.

GS	kt	80	100	120	140	160	180
OMESA - RW27 (9.1 NM)	MIN:SEC	6:50	5:28	4:33	3:54	3:25	3:02
Rate of descent (5.2%)	ft / MIN	420	530	640	740	850	960

* NORTH OF AERODROME ONLY.

Correction: Obstacles revised, note added, OCA(H) values, obstacle & definition.