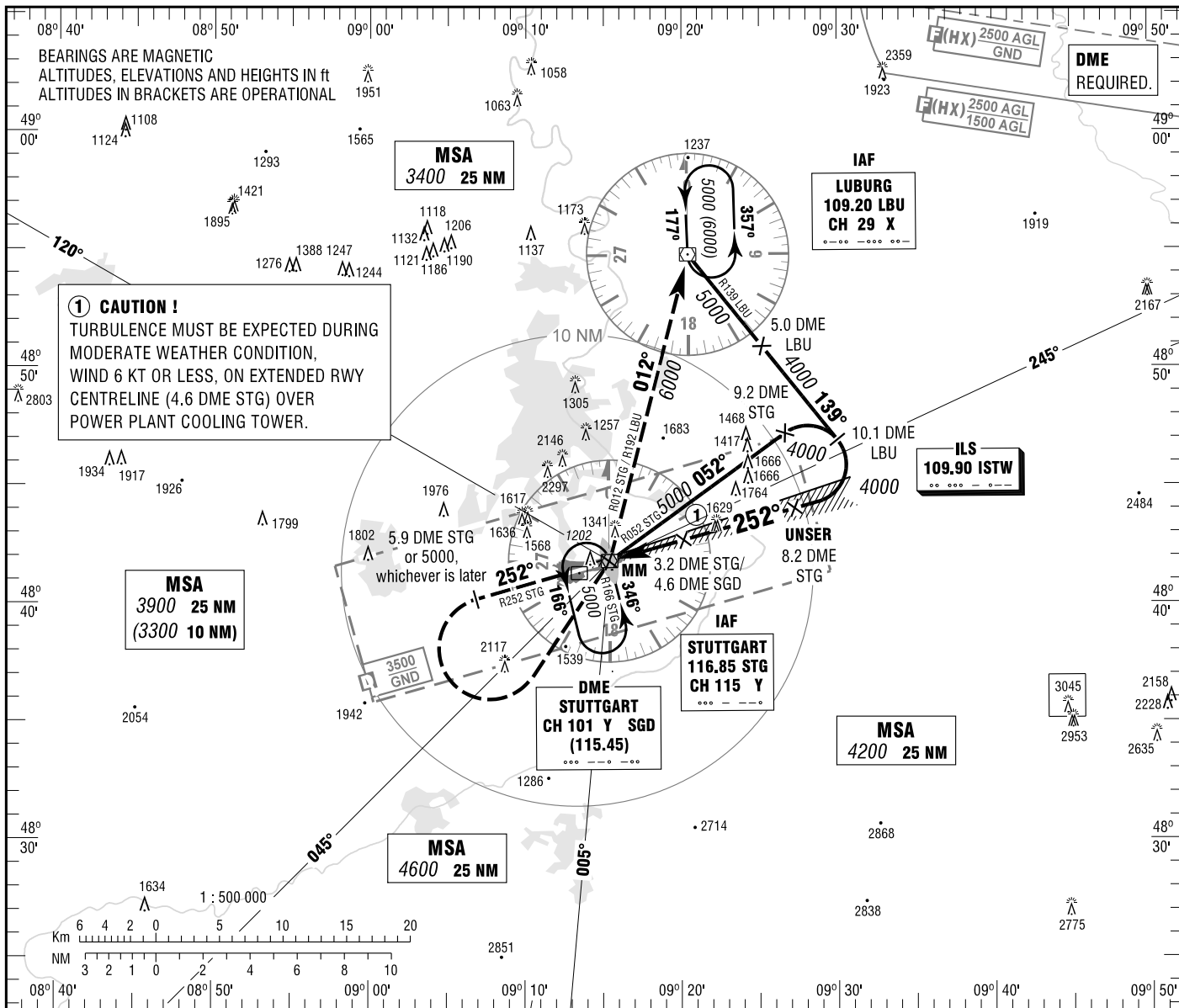


**INSTRUMENT APPROACH CHART - ICAO**

VAR 2° E  
ELEV 1276  
OCH RELATED TO THR 25 ELEV 1181

ATIS 126.125  
LANGEN RADAR 125.050  
119.200  
DIRECTOR 119.850  
TOWER 118.800  
GROUND 118.600

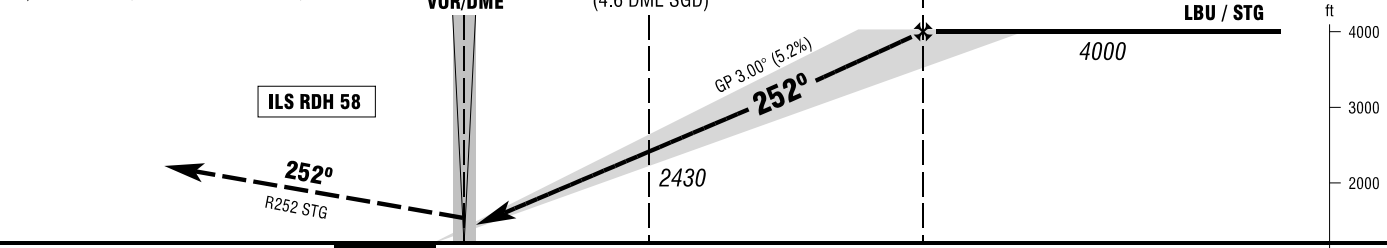
**STUTT GART ILS CAT II & III or LOC RWY 25**



**1 CAUTION !**  
TURBULENCE MUST BE EXPECTED DURING MODERATE WEATHER CONDITION, WIND 6 KT OR LESS, ON EXTENDED RWY CENTRELINE (4.6 DME STG) OVER POWER PLANT COOLING TOWER.

**MISSED APPROACH PROCEDURE**

Climb on R252 STG to 6000;  
when crossing 5.9 DME STG or 5000,  
whichever is later, LT to STG DVOR/DME;  
LT, on R012 STG/R192 LBU to LBU VOR/DME.



OCA (OCH)	A	B	C	D	D <sub>L</sub>
ILS-DME CAT I	1333 (152)	1343 (162)	1353 (172)	1362 (181)	
ILS-DME CAT II	1244 (63)	1261 (80)	1274 (93)	1287 (106)	
LOC-DME	1590 (410)	1590 (410)	1590 (410)	1590 (410)	

	1	2	3	4	5	6	7	8
DME STG								
DIST THR	1.5	2.5	3.5	4.5	5.5	6.5	7.5	8.5
ALTITUDE	1720	2040	2360	2680	3000	3320	3630	3950

**LOC-DME:** Timing not authorized for defining the MAPt.

GS	kt	80	100	120	140	160	180
3.2 DME STG - THR (3.8 NM)	MIN:SEC	2:51	2:17	1:54	1:38	1:26	1:16
Rate of descent (5.2%)	ft / MIN	420	530	640	740	850	960

CAT IIIA AND CAT IIIB (MNM RVR 75m) APPROVED.

Correction: Variation, procedure, MSA, OCA(H) values & obstacles revised.