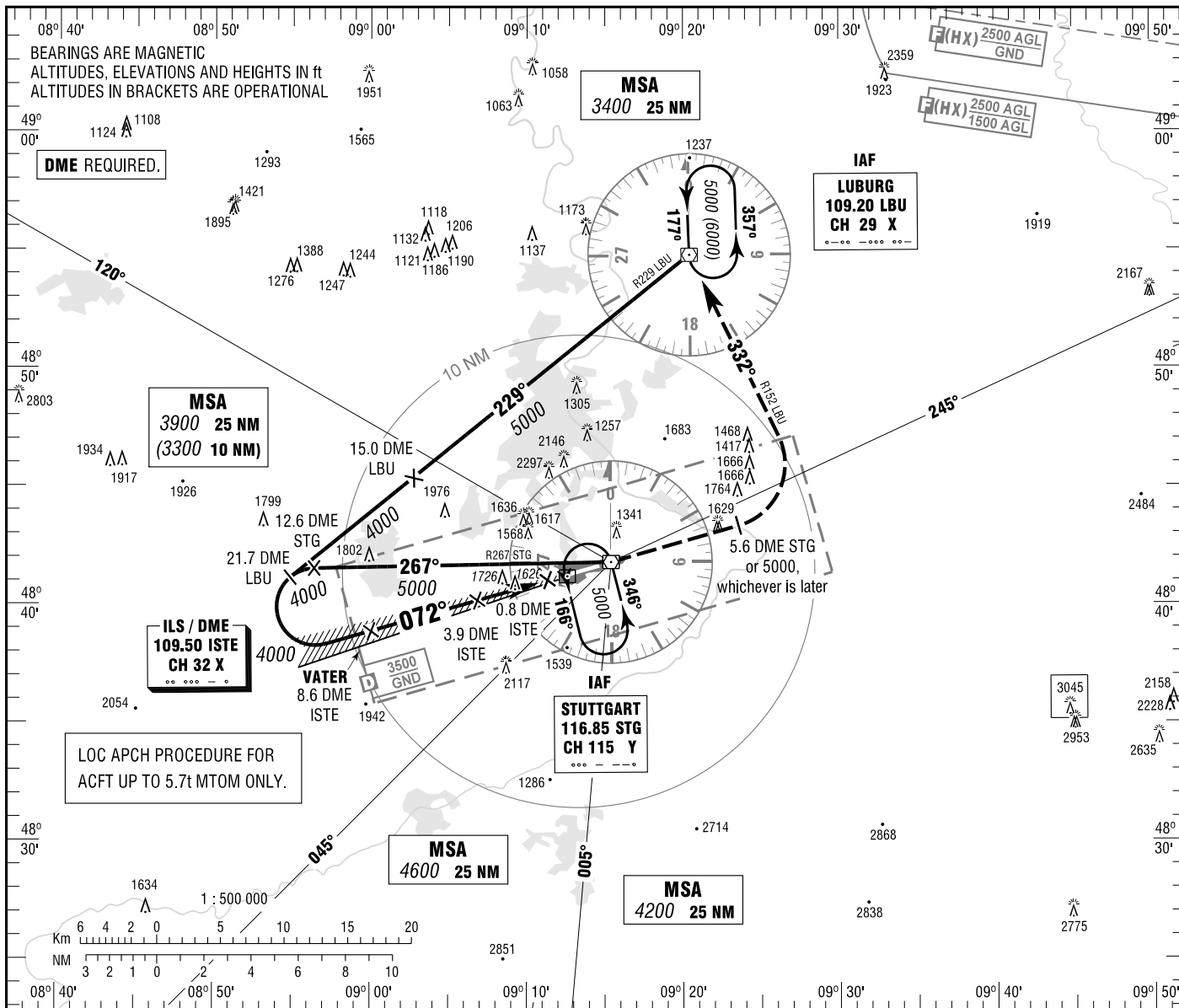


STUTTGART
ILS CAT II & III or LOC
RWY 07

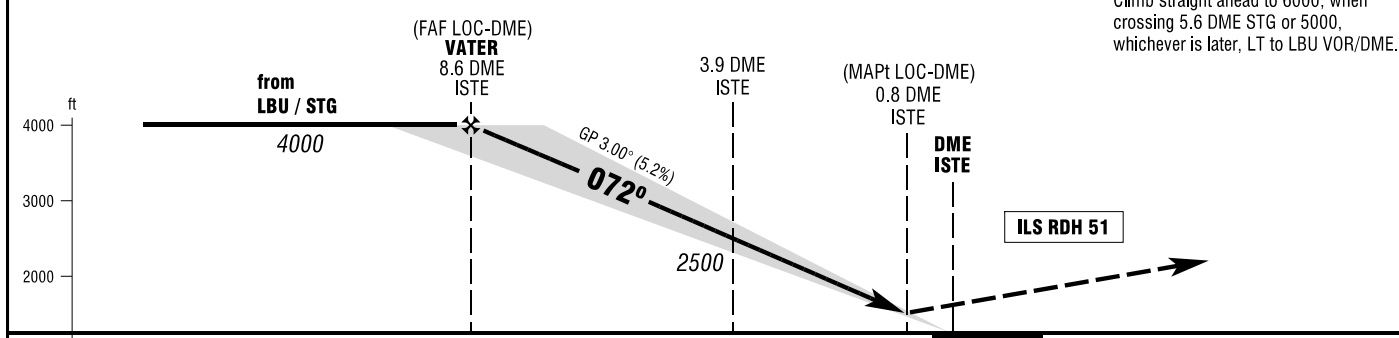
ATIS	126.125	DIRECTOR	119.850
LANGEN RADAR	125.050	TOWER	118.800
	119.200	GROUND	118.600

ELEV 1276
OCH RELATED TO VAR 2° E
THR 07 ELEV 1267

**INSTRUMENT
APPROACH
CHART - ICAO**



MISSED APPROACH PROCEDURE
Climb straight ahead to 6000; when crossing 5.6 DME STG or 5000, whichever is later, LT to LBU VOR/DME.



OCA (OCH)	A	B	C	D	D _L
ILS/DME CAT I	1418 (151)	1428 (161)	1438 (171)	1448 (181)	1451 (184)
ILS/DME CAT II	1327 (60)	1340 (73)	1353 (86)	1366 (99)	1366 (99)
LOC-DME *	1980 (710)	1980 (710)			

* ONLY FOR ACFT UP TO 5.7 TO MTOM.

DME ISTE	8	7	6	5	4	3
DIST THR	7.8	6.8	5.8	4.8	3.8	2.8
ALTITUDE	3810	3490	3170	2850	2530	2210

LOC-DME: Timing not authorized for defining the MAPt.

GS	kt	80	100	120	140	160	180
3.9 DME ISTE - THR (3.7 NM)	MIN:SEC	2:47	2:13	1:51	1:35	1:23	1:14
Rate of descent (5.2%)	ft / MIN	420	530	640	740	850	960

Correction: Procedure.