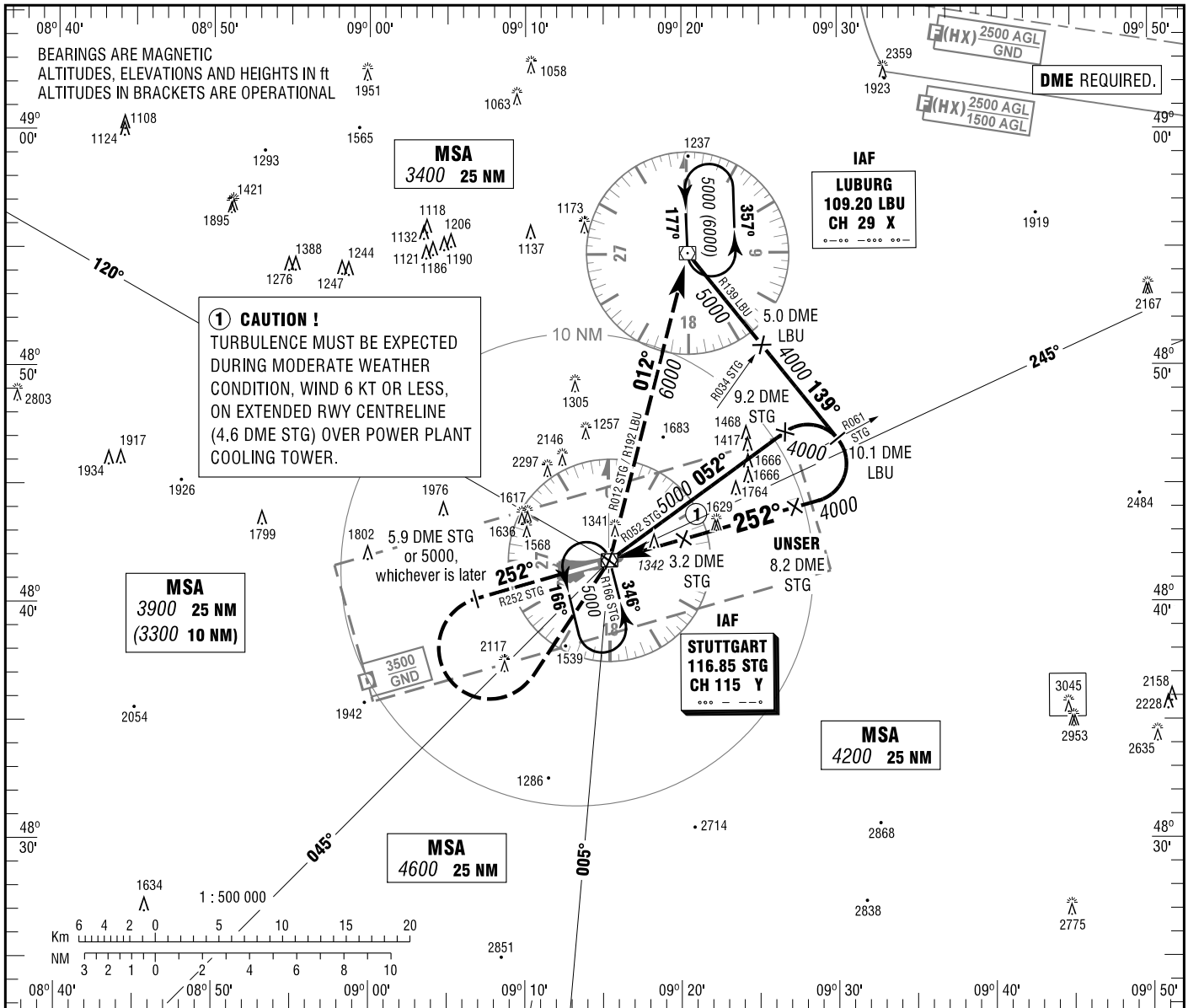


**INSTRUMENT
APPROACH
CHART - ICAO**

VAR 2° E
ELEV 1276
OCH RELATED TO
THR 25 ELEV 1181

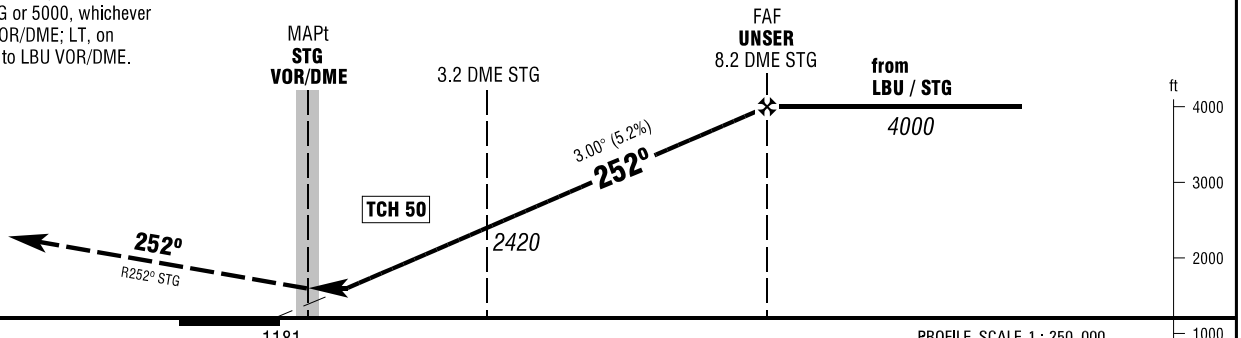
ATIS 126.125 DIRECTOR 119.850
LANGEN RADAR 125.050 TOWER 118.800
119.200 GROUND 118.600

**STUTTART
VOR
RWY 25**



MISSED APPROACH PROCEDURE

Climb on R252 STG to 6000; when crossing 5.9 DME STG or 5000, whichever is later, LT to STG DVOR/DME; LT, on R012 STG/R192 LBU to LBU VOR/DME.



NM	6	5	4	3	2	1	0	1
OCA (OCH)							1181	
VOR/DME							1590 (410)	

DME STG	1	2	3	4	5	6	7	8
DIST THR	1.5	2.5	3.5	4.5	5.5	6.5	7.5	8.5
ALTITUDE	1710	2030	2350	2670	2990	3310	3620	3940

Timing not authorized for defining the MAPt.

GS	kt	80	100	120	140	160	180
3.2 DME STG - MAPt (3.2 NM)	MIN:SEC	2:24	1:55	1:36	1:22	1:12	1:04
Rate of descent (5.2%)	ft / MIN	420	530	640	740	850	960

Correction: Variation, procedure, MSA.