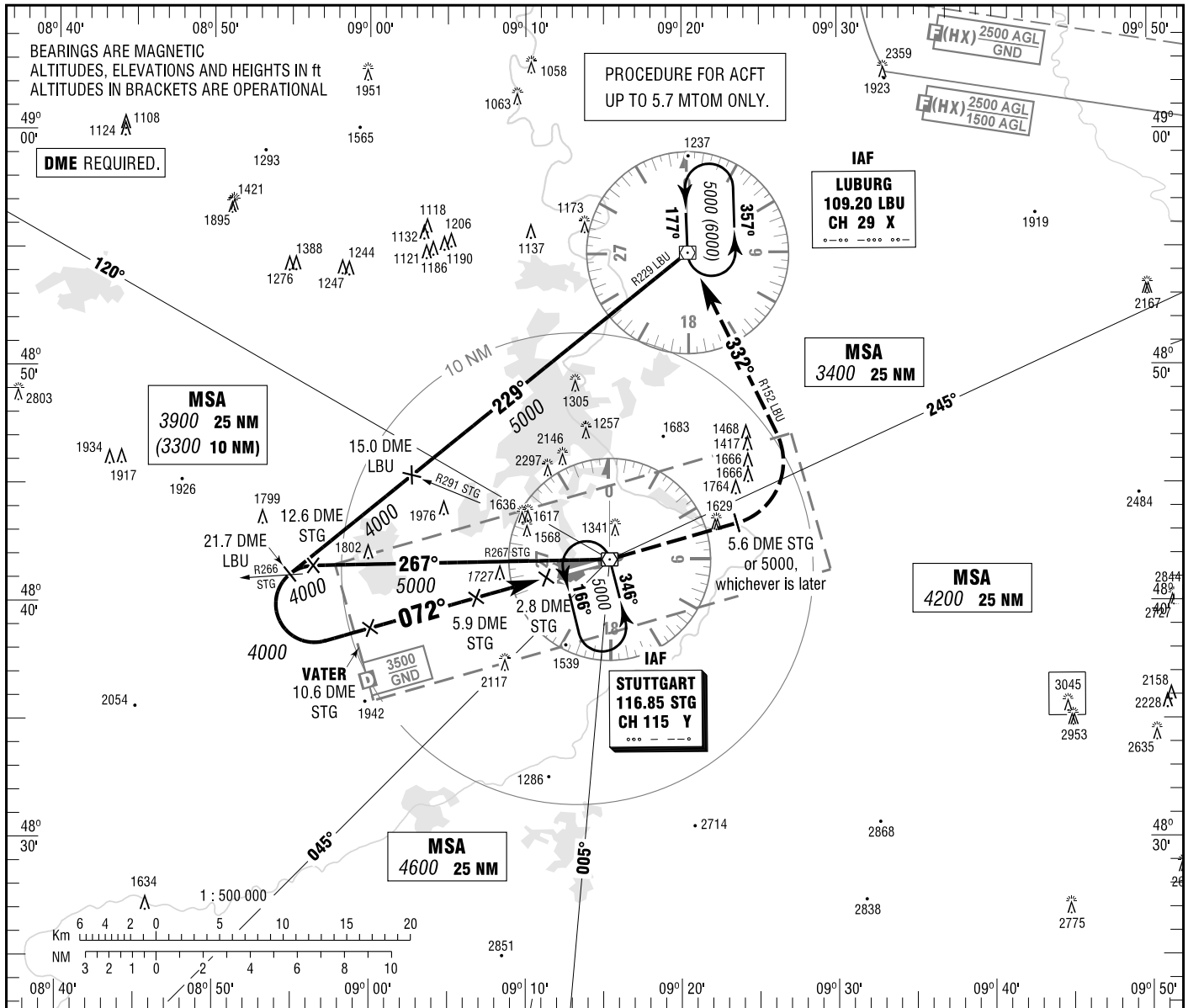


STUTTGART
VOR
RWY 07

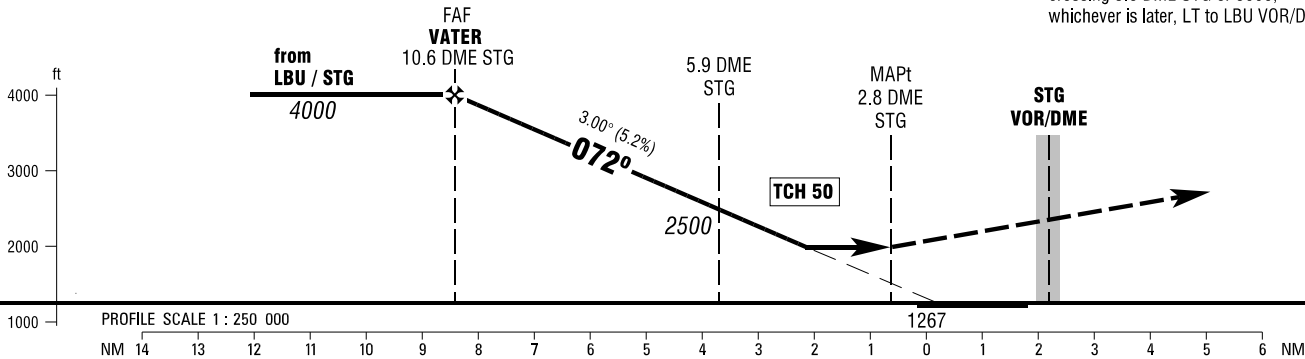
ATIS	126.125	DIRECTOR	119.850
LANGEN RADAR	125.050	TOWER	118.800
	119.200	GROUND	118.600

ELEV 1276
OCH RELATED TO VAR 2° E
THR 07 ELEV 1267

INSTRUMENT
APPROACH
CHART - ICAO



MISSED APPROACH PROCEDURE
Climb straight ahead to 6000; when crossing 5.6 DME STG or 5000, whichever is later, LT to LBU VOR/DME.



OCA (OCH)	A	B			
VOR/DME *	1980 (710)	1980 (710)			

DME STG	10	9	8	7	6	5
DIST THR	7.8	6.8	5.8	4.8	3.8	2.8
ALTITUDE	3810	3490	3170	2850	2530	2210
Timing not authorized for defining the MAPt.						
GS	kt	80	100	120	140	
5.9 DME STG - MAPt (3.1 NM)	MIN:SEC	2:20	1:52	1:33	1:20	
Rate of descent (5.2%)	ft / MIN	420	530	640	740	

* ONLY FOR ACFT UP TO 5.7t MTOM.

Correction: Procedure.