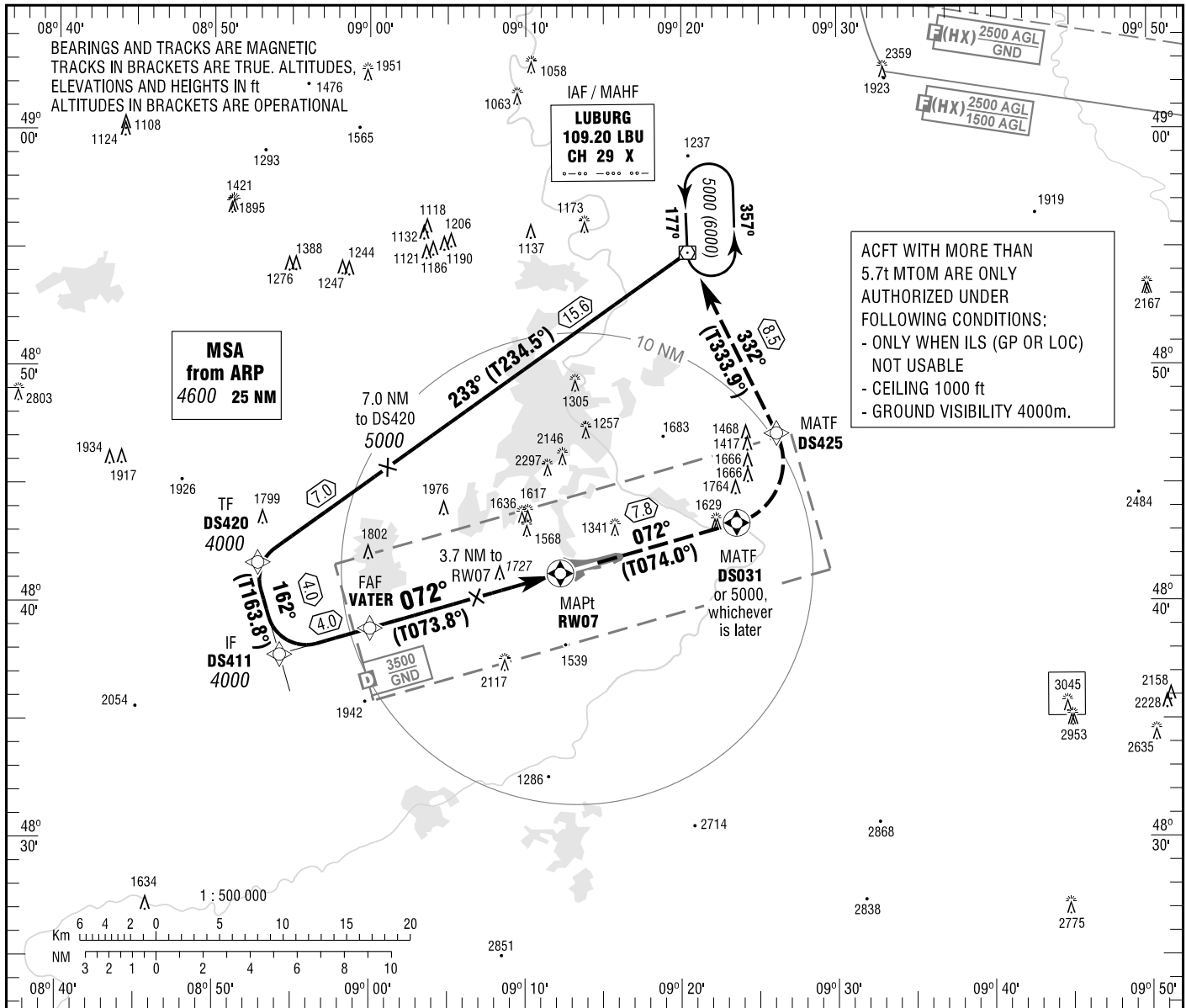


STUTTGART  
RNAV (GPS)  
RWY 07

ATIS	126.125	DIRECTOR	119.850	ELEV	1276
LANGEN RADAR	125.050	TOWER	118.800	OCH RELATED TO	VAR 2° E
	119.200	GROUND	118.600	THR 07	ELEV 1267

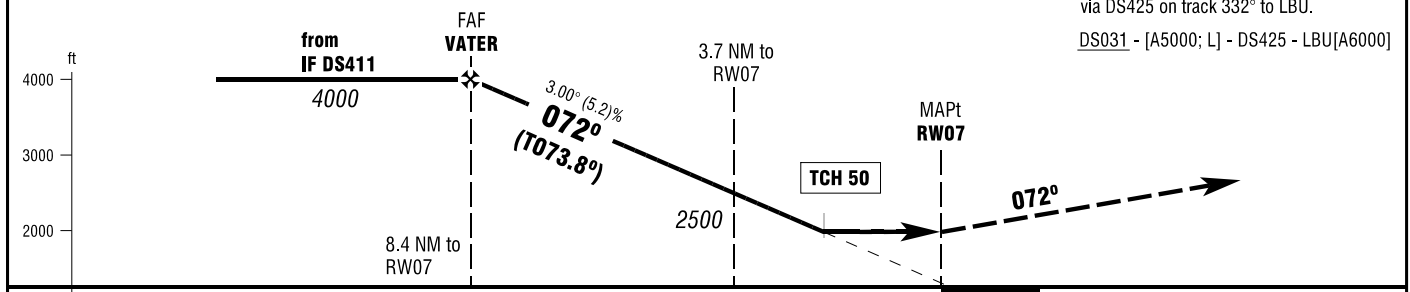
INSTRUMENT  
APPROACH  
CHART - ICAO



**MISSED APPROACH PROCEDURE**

On track 072° to 6000; when crossing DS031 or 5000, whichever is later, LT; via DS425 on track 332° to LBU.

DS031 - [A5000; L] - DS425 - LBU[A6000]



DIST THR / RW07	<b>8</b>	<b>7</b>	<b>6</b>	<b>5</b>	<b>4</b>	<b>3</b>		
ALTITUDE	3870	3550	3230	2910	2600	2280		

Timing not authorized for defining the MAPt.

GS	kt	<b>80</b>	<b>100</b>	<b>120</b>	<b>140</b>	<b>160</b>	<b>180</b>
VATER - RW07 (8.4 NM)	MIN:SEC	6:18	5:02	4:12	3:36	3:09	2:48
Rate of descent (5.2%)	ft / MIN	420	530	640	740	850	960

Correction: Note modified.