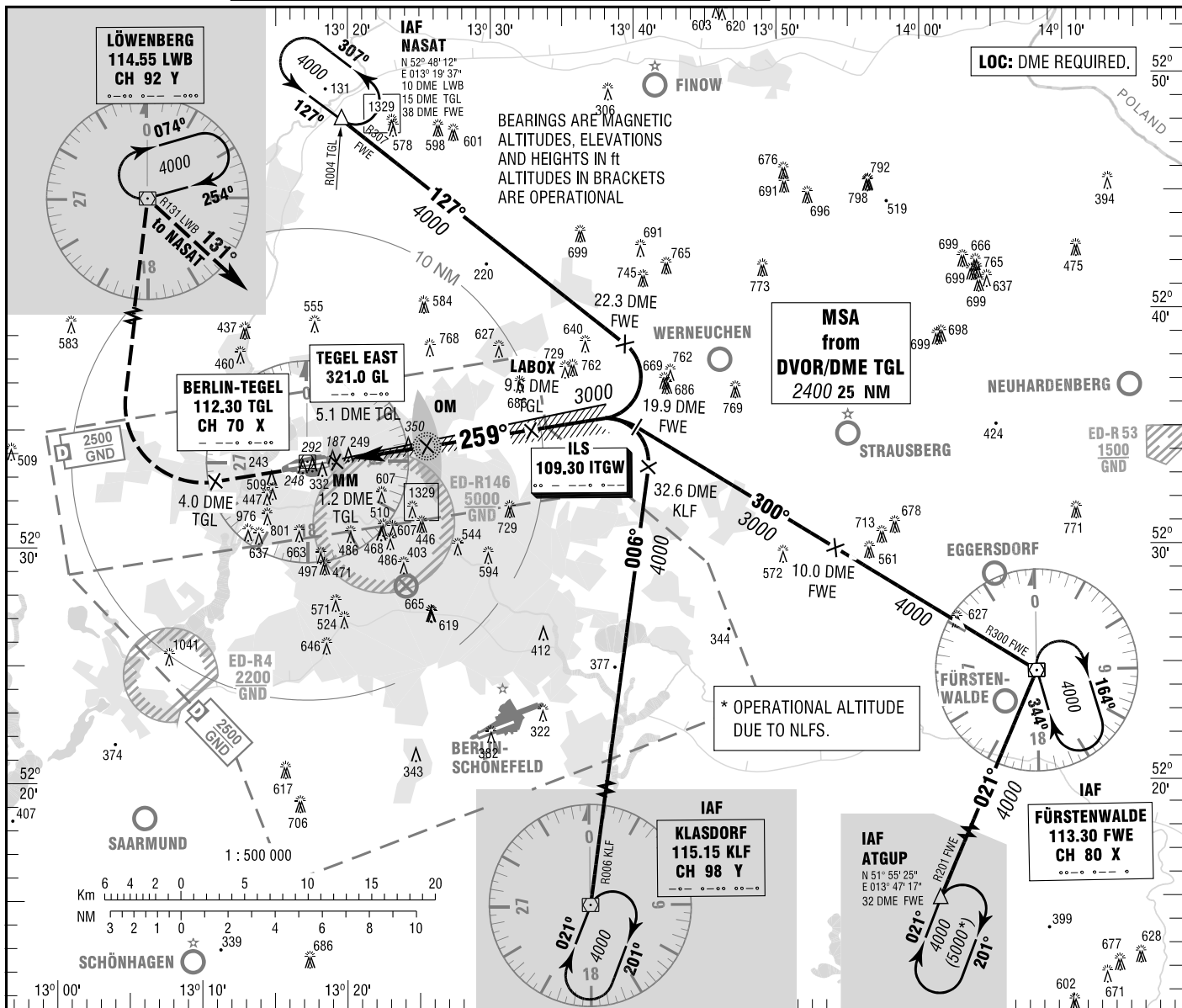


BERLIN-TEGEL
ILS CAT I & II or LOC
RWY 26L

TEGEL ATIS	112.300 (TGL)	BERLIN DIRECTOR	136.100
	125.900	TEGEL TOWER	124.525
BREMEN RADAR	119.625 (NASAT)	TEGEL GROUND	121.750
	126.425 (KLF, FWE, ATGUP)	TEGEL DELIVERY	121.925

ELEV 122
OCH RELATED TO VAR 2° E
THR 26L ELEV 122

INSTRUMENT
APPROACH
CHART - ICAO



MISSED APPROACH PROCEDURE
On runway track, climb to MAX. 3000;
at 4.0 DME West of TGL continue climb to
4000 and RT via LWB DVOR to NASAT.

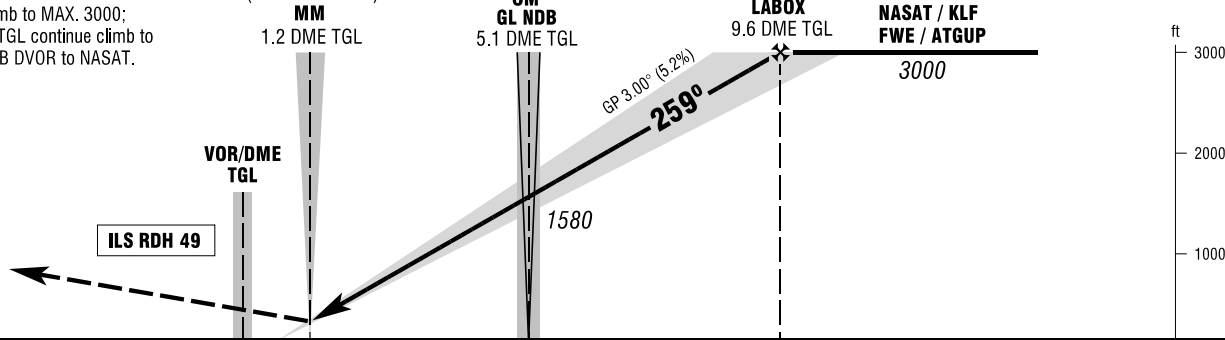
(MAPt LOC-DME)

MM
1.2 DME TGL

OM
GL NDB
5.1 DME TGL

(FAF LOC-DME)
LABOX
9.6 DME TGL

from
NASAT / KLF
FWE / ATGUP
3000



OCA (OCH)	A	B	C	D
ILS CAT I	363 (241)	373 (251)	383 (261)	392 (270)
ILS CAT II	201 (79)	217 (95)	260 (138)	273 (155)
LOC-DME	600 (480)	600 (480)	600 (480)	600 (480)

DME TGL	2	3	4	5	6	7	8	9
DIST THR	1.3	2.3	3.3	4.3	5.3	6.3	7.3	8.3
ALTITUDE	590	910	1230	1550	1860	2180	2500	2820

LOC-DME: Timing not authorized for defining the MAPt.

GS	kt	80	100	120	140	160	180
OM - THR (4.4 NM)	MIN:SEC	3:18	2:38	2:12	1:53	1:39	1:28
Rate of descent (5.2%)	ft / MIN	420	530	640	740	850	960

Correction: OCA(H) - obstacles & - values.