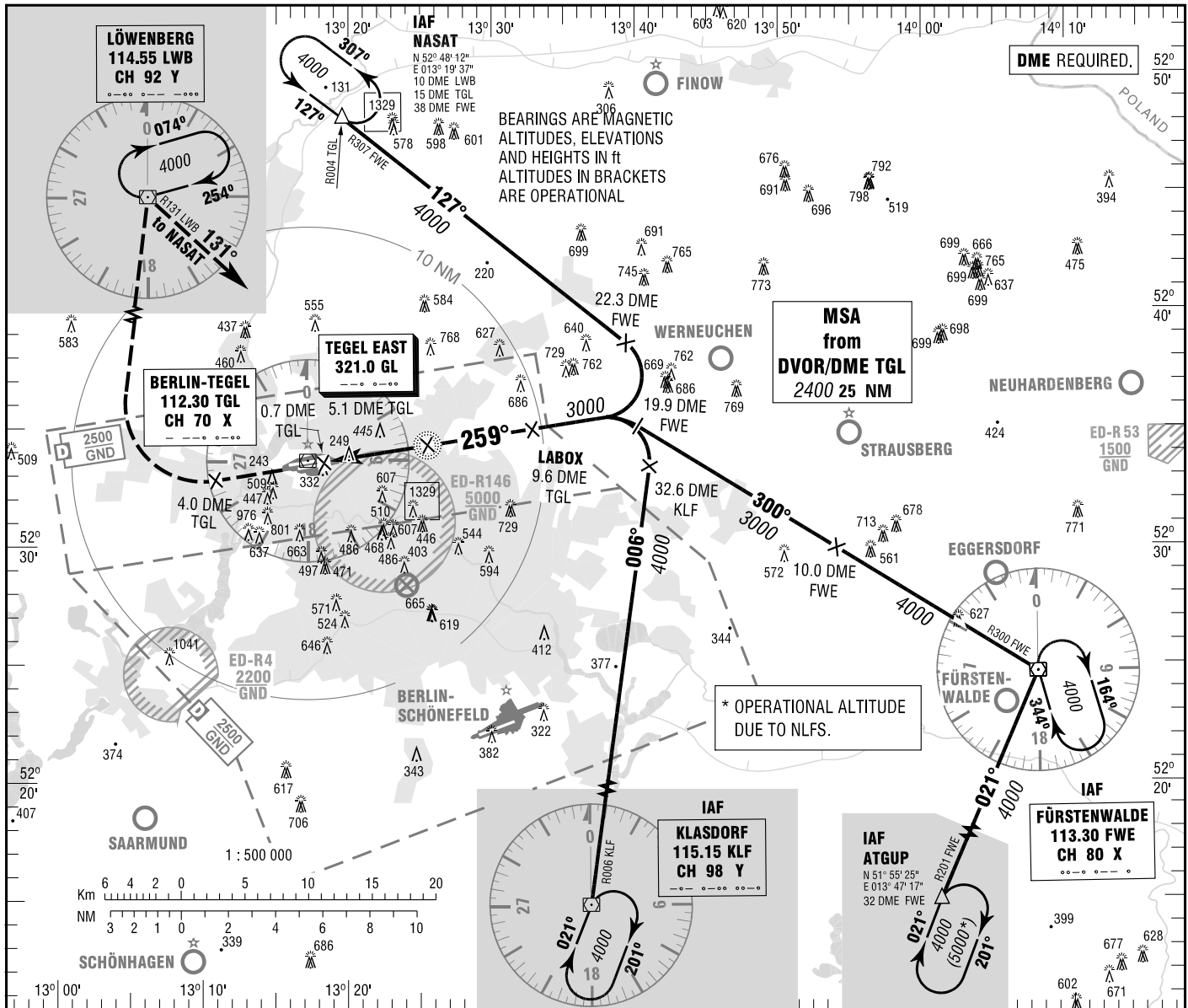


BERLIN-TEGEL
NDB
RWY 26L

TEGEL ATIS	112.300 (TGL)	BERLIN DIRECTOR	136.100
NDB	125.900	TEGEL TOWER	124.525
BREMEN RADAR	119.625 (NASAT)	TEGEL GROUND	121.750
	126.425 (KLF, FWE, ATGUP)	TEGEL DELIVERY	121.925

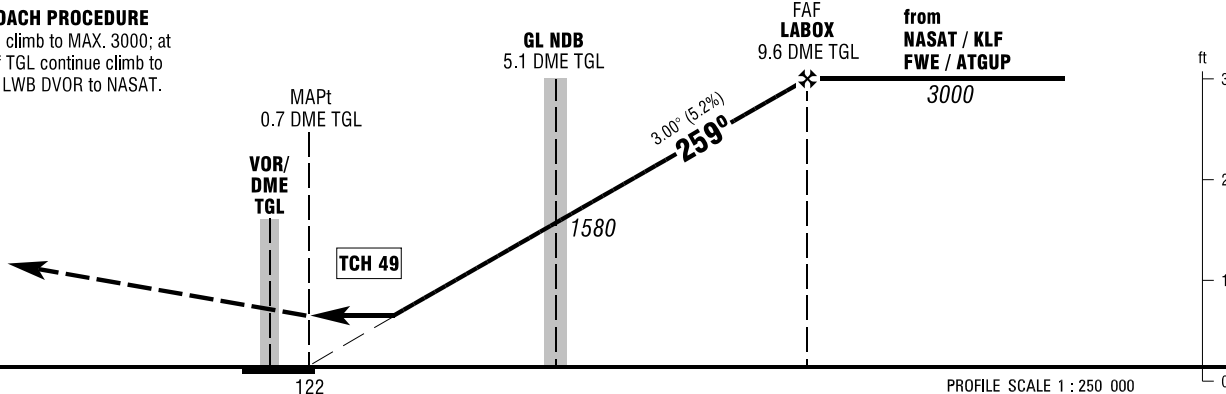
ELEV 122
OCH RELATED TO VAR 2° E
THR 26L ELEV 122

**INSTRUMENT
APPROACH
CHART - ICAO**



MISSED APPROACH PROCEDURE

On runway track, climb to MAX. 3000; at 4.0 DME West of TGL continue climb to 4000 and RT via LWB DVOR to NASAT.



OCA (OCH)	A	B	C	D
NDB-DME	680 (550)	680 (550)	680 (550)	680 (550)

DME TGL	3	4	5	6	7	8	9
DIST THR	2.3	3.3	4.3	5.3	6.3	7.3	8.3
ALTITUDE	910	1230	1550	1860	2180	2500	2820
Timing not authorized for defining the MAPt.							
GS	kt	80	100	120	140	160	180
GL NDB - MAPt (4.4 NM)	MIN:SEC	3:18	2:38	2:12	1:53	1:39	1:26
Rate of descent (5.2%)	ft / MIN	420	530	640	740	850	960

Correction: OCA(H) - obstacles & - values.