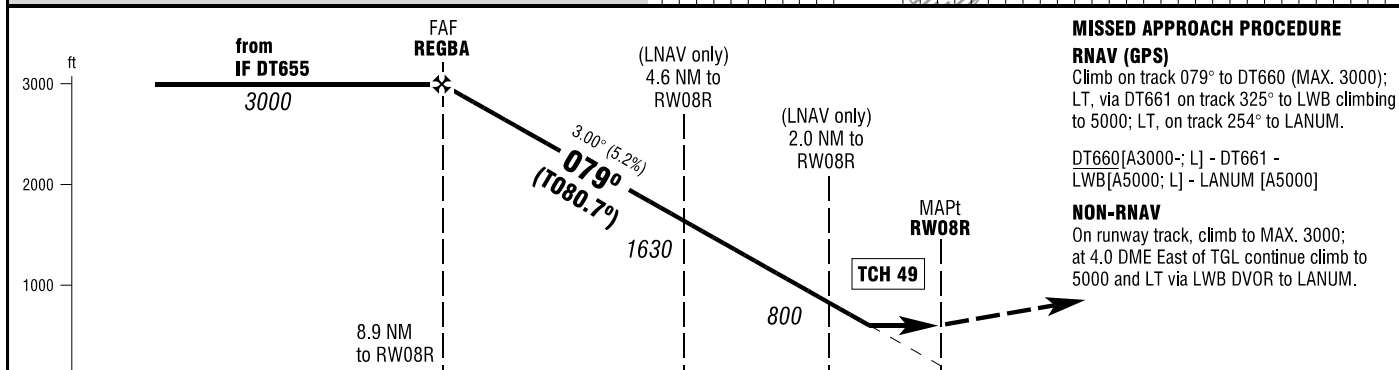
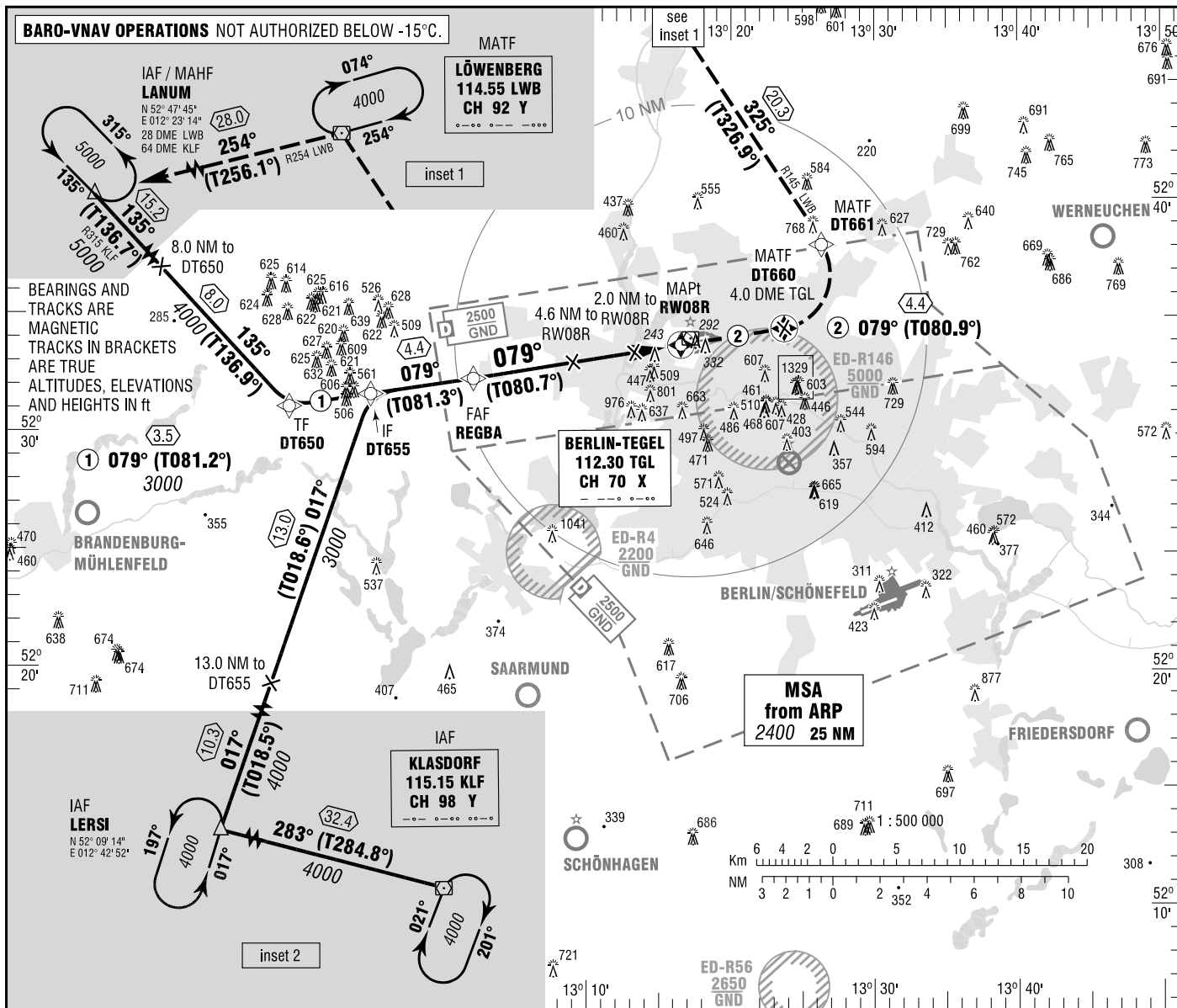


BERLIN-TEGEL
RNAV (GPS)
RWY 08R

TEGEL ATIS	112.300 (TGL)	BERLIN DIRECTOR	136.100
BREMEN RADAR	119.625 (LANUM)	TEGEL TOWER	124.525
	126.425 (KLF, LERSI)	TEGEL GROUND	121.750
		TEGEL DELIVERY	121.925

ELEV 122
OCH RELATED TO VAR 2° E
THR 08R ELEV 109

**INSTRUMENT
APPROACH
CHART - ICAO**



MISSED APPROACH PROCEDURE

RNAV (GPS)

Climb on track 079° to DT660 (MAX. 3000);
LT, via DT661 on track 325° to LWB climbing
to 5000; LT, on track 254° to LANUM.

DT660[A3000-; L] - DT661 -
LWB[A5000; L] - LANUM [A5000]

NON-RNAV

On runway track, climb to MAX. 3000;
at 4.0 DME East of TGL continue climb to
5000 and LT via LWB DVOR to LANUM.

OCA (OCH)	A	B	C	D
LNAV	540 (430)	580 (470)	580 (470)	580 (470)
LNAV / VNAV	480 (370)	480 (370)	480 (370)	480 (370)

DIST THR / RW08R	8	7	6	5	4	3	2
ALTITUDE	2710	2390	2070	1750	1440	1120	800

Timing not authorized for defining the MAPt.

GS	kt	80	100	120	140	160	180
REGBA - RW08R (8.9 NM)	MIN:SEC	6:41	5:20	4:27	3:49	3:20	2:58
Rate of descent (5.2%)	ft / MIN	420	530	640	740	850	960

Correction: OCA(H) - obstacles & - values.