

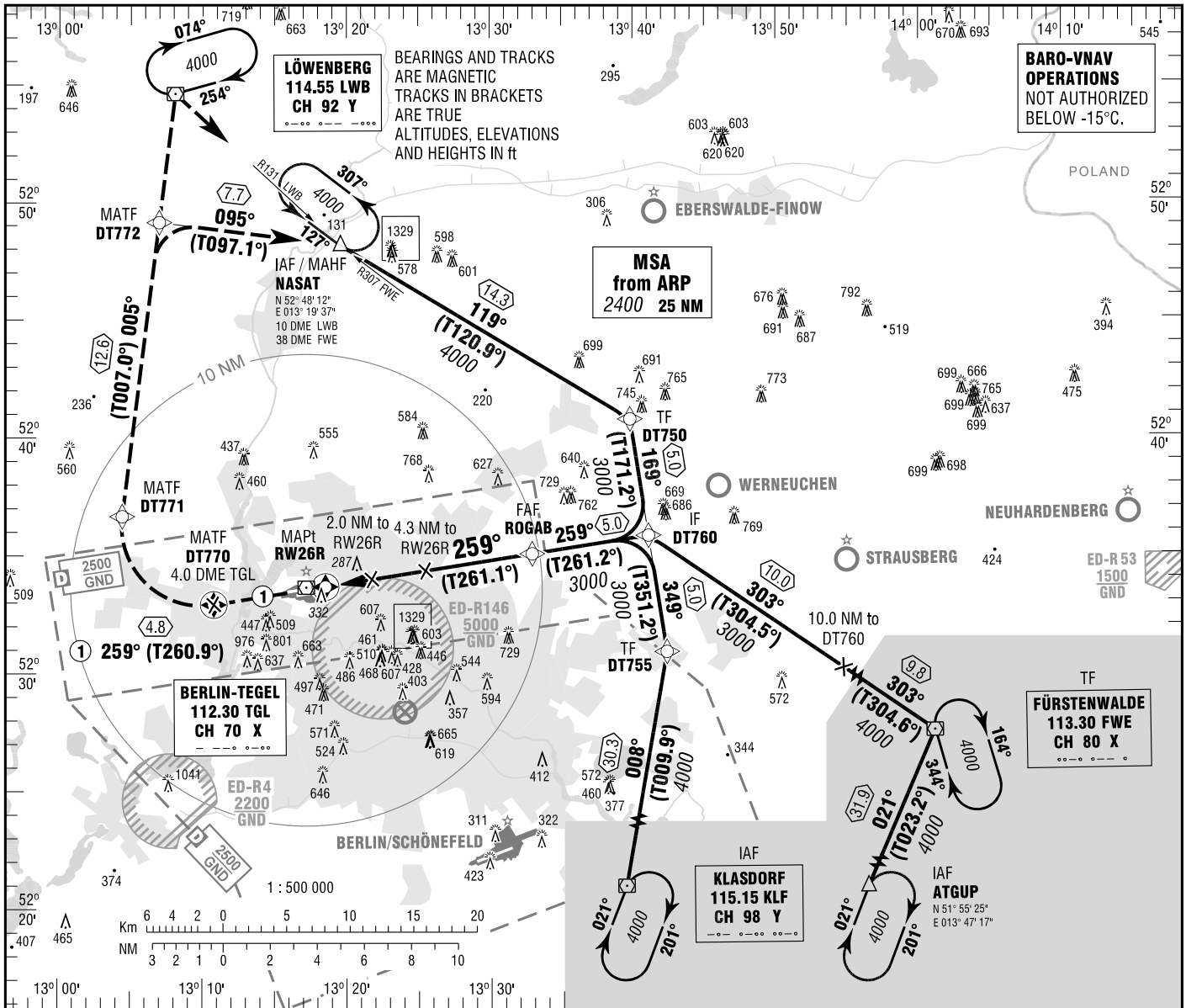
INSTRUMENT
APPROACH
CHART - ICAO

VAR 2° E
ELEV 122
OCH RELATED TO
THR 26R ELEV 117

TEGEL ATIS 112.300 (TGL)
125.900
BREMER RADAR 119.625 (NASAT)
126.425 (KLF, FWE, ATGUP)

BERLIN DIRECTOR 136.100
TEGEL TOWER 124.525
TEGEL GROUND 121.750
TEGEL DELIVERY 121.925

BERLIN-TEGEL
RNAV (GPS)
RWY 26R



MISSED APPROACH PROCEDURE

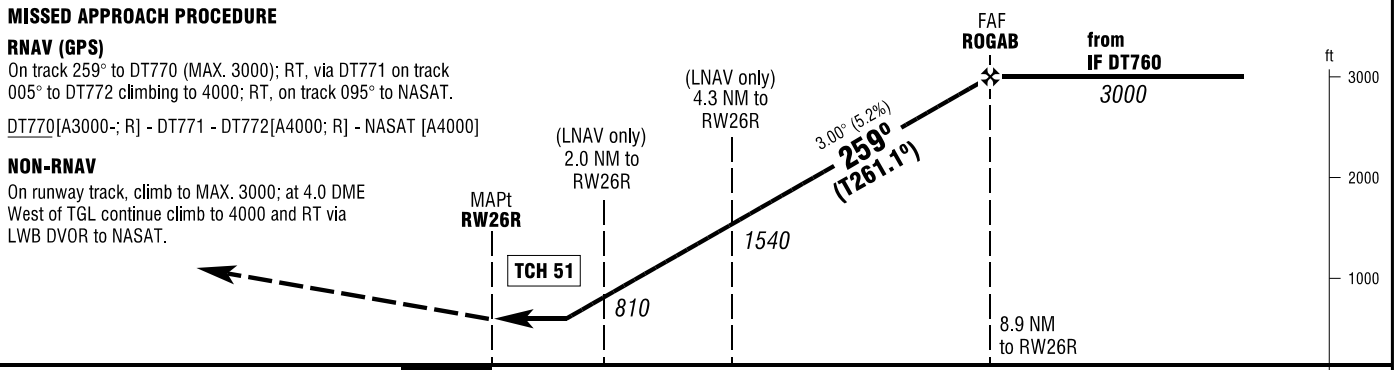
RNAV (GPS)

On track 259° to DT770 (MAX. 3000); RT, via DT771 on track 005° to DT772 climbing to 4000; RT, on track 095° to NASAT.

DT770[A3000-; R] - DT771 - DT772[A4000; R] - NASAT [A4000]

NON-RNAV

On runway track, climb to MAX. 3000; at 4.0 DME West of TGL continue climb to 4000 and RT via LWB DVOR to NASAT.



PROFILE SCALE 1 : 250 000

| OCA (OCH) | A | B | C | D |
|-------------|--------------|--------------|--------------|--------------|
| LNAV | 560 (440) | 560 (440) | 560 (440) | 560 (440) |
| LNAV / VNAV | 530 (410) | 530 (410) | 530 (410) | 530 (410) |

| DIST THR / RW26R | 2 | 3 | 4 | 5 | 6 | 7 | 8 |
|------------------|-----|------|------|------|------|------|------|
| ALTITUDE | 810 | 1130 | 1450 | 1760 | 2080 | 2400 | 2720 |

Timing not authorized for defining the MAPt.

| GS | kt | 80 | 100 | 120 | 140 | 160 | 180 |
|------------------------|----------|------|------|------|------|------|------|
| ROGAB - RW26R (8.9 NM) | MIN:SEC | 6:41 | 5:20 | 4:27 | 3:49 | 3:20 | 2:58 |
| Rate of descent (5.2%) | ft / MIN | 420 | 530 | 640 | 740 | 850 | 960 |

Correction: OCA(H) - obstacles & - values.