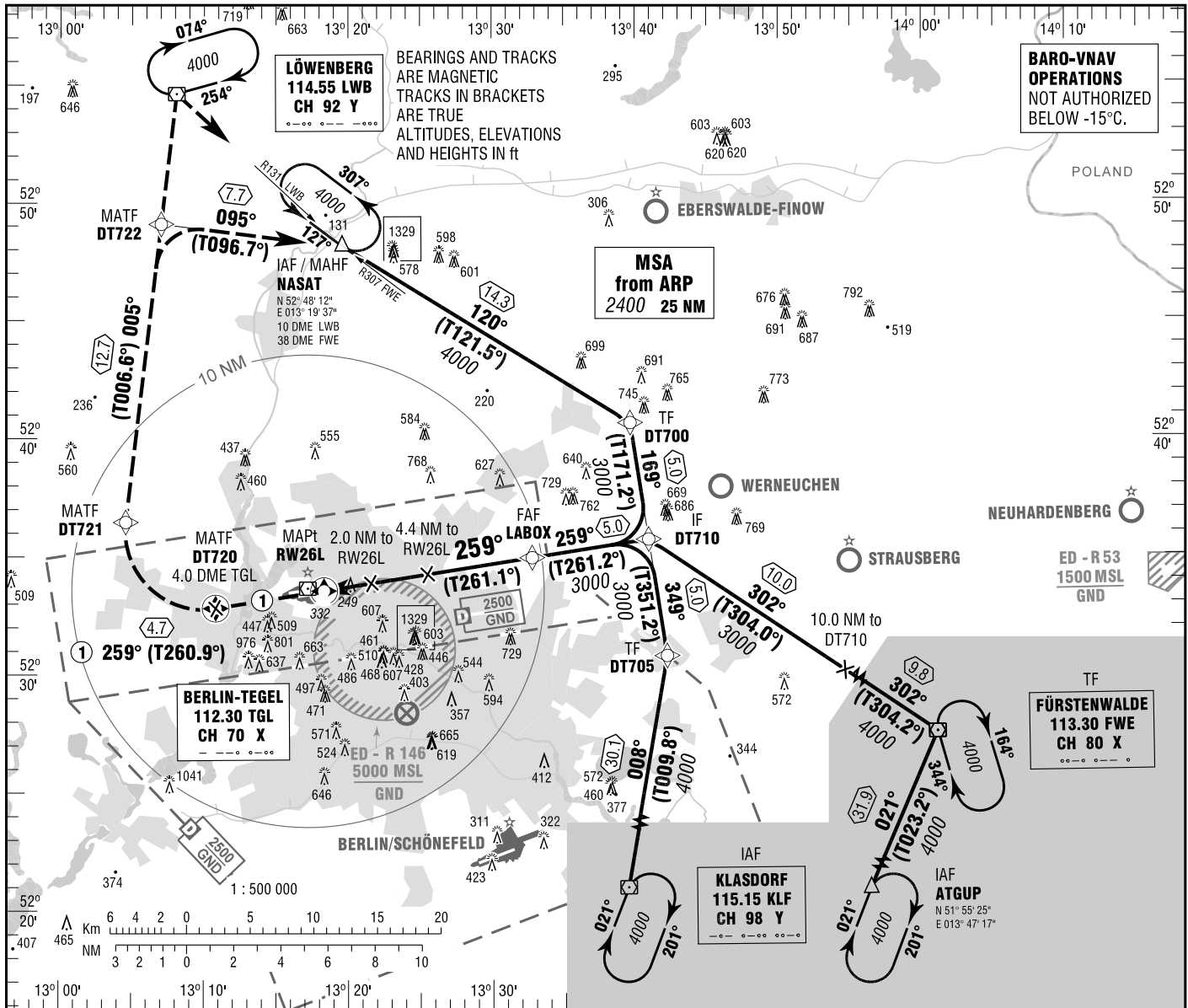


**BERLIN-TEGEL**  
RNAV (GPS)  
RWY 26L

TEGEL ATIS	112.300 (TGL)	BERLIN DIRECTOR	136.100
BREMEN RADAR	125.900	TEGEL TOWER	124.525
	119.625 (NASAT)	TEGEL GROUND	121.750
	126.425 (KLF, FWE, ATGUP)	TEGEL DELIVERY	121.925

ELEV 122  
OCH RELATED TO VAR 2° E  
THR 26L ELEV 122

**INSTRUMENT  
APPROACH  
CHART - ICAO**



**MISSED APPROACH PROCEDURE**

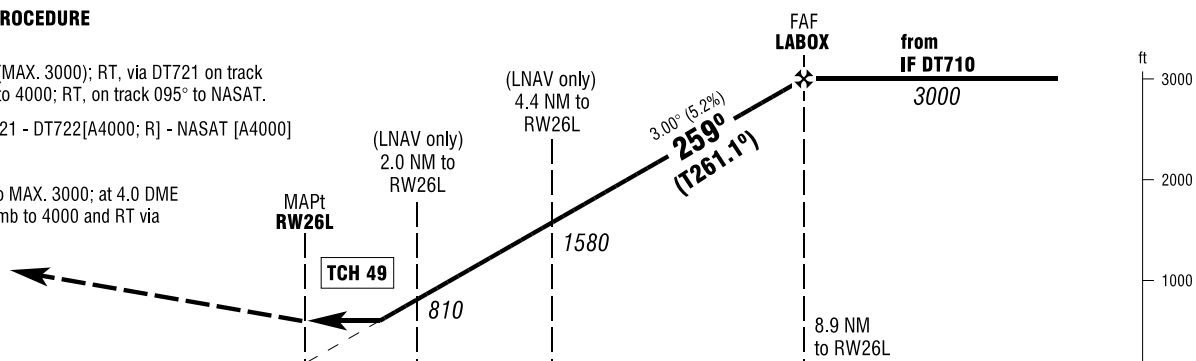
**RNAV (GPS)**

On track 259° to DT720 (MAX. 3000); RT, via DT721 on track 005° to DT722 climbing to 4000; RT, on track 095° to NASAT.

DT720[A3000-; R] - DT721 - DT722[A4000; R] - NASAT [A4000]

**NON-RNAV**

On runway track, climb to MAX. 3000; at 4.0 DME West of TGL continue climb to 4000 and RT via LWB DVOR to NASAT.



OCA (OCH)	A	B	C	D
RNAV	580 (460)	580 (460)	580 (460)	580 (460)
LNAV / VNAV	500 (380)	500 (380)	500 (380)	500 (380)

DIST THR / RW26L	2	3	4	5	6	7	8
ALTITUDE	810	1130	1450	1770	2090	2400	2720

Timing not authorized for defining the MAPt.

GS	kt	80	100	120	140	160	180
LABOX - RW26L (8.9 NM)	MIN:SEC	6:41	5:20	4:27	3:49	3:20	2:58
Rate of descent (5.2%)	ft / MIN	420	530	640	740	850	960

Correction: OCA(H) values & obstacles.