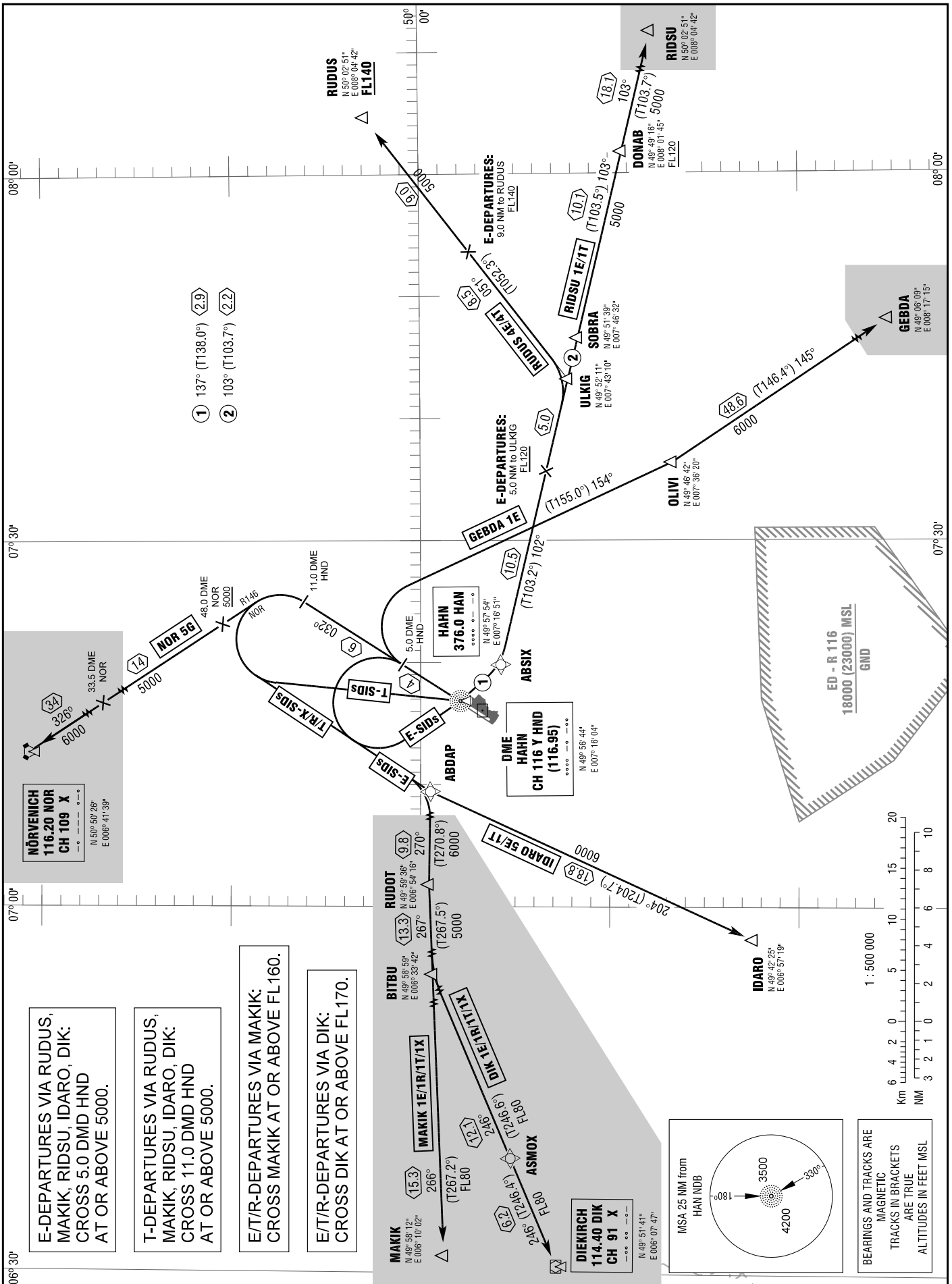


STANDARD DEPARTURE  
CHART - INSTRUMENT  
(SID)

TRANSITION  
ALTITUDE 5000  
VAR 1° E

HAHN ATIS	136.350
HAHN GROUND	121.975
HAHN TOWER	119.650
LANGEN RADAR	125.600

FRANKFURT-HAHN  
RWY 03



STANDARD DEPARTURE  
ROUTES – INSTRUMENT  
(SID)FRANKFURT-HAHN  
RWY 03

Designator	Route	After Take-Off		Remarks
		Climb to	Contact	
1	2	3	4	5
<b>DIK 1E</b>	<b>DIEKIRCH ONE ECHO</b> On track 032° HAN to 5.0 DME HND, LT, on track 213° to ABDAP (Δ), RT, on track 270° to RUDOT (Δ), LT, on track 267° to BITBU (Δ), LT, on track 246° via ASMOX to DIK (Δ). Cross 5.0 DME HND at or above 5000 and DIK at or above FL170. <b>GPS/FMS RNAV:</b> [A2100+] - FH060[A5000+; L] - FH061 - ABDAP[R] - RUDOT[L] - BITBU[L] - ASMOX - DIK[F170+].	5000 ft	Langen Radar 125.600	<ol style="list-style-type: none"> <li>1. Flights have to be able to cross 5.0 DME HND at or above 5000 and DIK at or above FL170. If unable to comply, request DIK 1T.</li> <li>2. PDG 13.5% (820 ft/NM) or more until passing 5000 due to airspace structure.</li> <li>3. After 5.0 DME HND BRNAV equipment necessary.</li> </ol>
<b>DIK 1T</b>	<b>DIEKIRCH ONE TANGO</b> On track 032° HAN to 11.0 DME HND, LT, on track 213° to ABDAP (Δ), RT, on track 270° to RUDOT (Δ), LT, on track 267° to BITBU (Δ), LT, on track 246° via ASMOX to DIK (Δ). Cross 11.0 DME HND at or above 5000 and DIK at or above FL170. <b>GPS/FMS RNAV:</b> [A2100+] - FH063[A5000+; L] - FH066 - ABDAP[R] - RUDOT[L] - BITBU[L] - ASMOX - DIK[F170+].			<ol style="list-style-type: none"> <li>1. Flights have to be able to cross 11.0 DME HND at or above 5000 and DIK at or above FL170. If unable to comply, request DIK 1R.</li> <li>2. PDG 5.5 % (330 ft/NM) or more until passing 5000 due to airspace structure.</li> <li>3. After 11.0 DME HND BRNAV equipment necessary.</li> </ol>
<b>DIK 1R</b>	<b>DIEKIRCH ONE ROMEO</b> On track 032° HAN to 11.0 DME HND, LT, on track 213° to ABDAP (Δ), RT, on track 270° to RUDOT (Δ), LT, on track 267° to BITBU (Δ), LT, on track 246° via ASMOX to DIK (Δ). Cross DIK at or above FL170. <b>GPS/FMS RNAV:</b> [A2100+] - FH063[L] - FH066 - ABDAP[R] - RUDOT[L] - BITBU[L] - ASMOX - DIK[F170+].			<ol style="list-style-type: none"> <li>1. Flights have to be able to cross DIK at or above FL170. If unable to comply, request DIK 1X.</li> <li>2. After 11.0 DME HND BRNAV equipment necessary.</li> </ol>
<b>DIK 1X</b>	<b>DIEKIRCH ONE X-RAY</b> On track 032° HAN to 11.0 DME HND, LT, on track 213° to ABDAP (Δ), RT, on track 270° to RUDOT (Δ), LT, on track 267° to BITBU (Δ), LT, on track 246° via ASMOX to DIK (Δ). <b>GPS/FMS RNAV:</b> [A2100+] - FH063[L] - FH066 - ABDAP[R] - RUDOT[L] - BITBU[L] - ASMOX - DIK.			After 11.0 DME HND BRNAV equipment necessary.
<b>GEBDA 1E</b>	<b>GEBDA ONE ECHO</b> On track 032° HAN to 5.0 DME HND, RT, on track 154° to OLIVI (Δ), LT, on track 145° to GEBDA (Δ). <b>GPS/FMS RNAV:</b> [A2100+] - FH060[R] - FH067 - OLIVI[L] - GEBDA.			<ol style="list-style-type: none"> <li>1. Only available between Friday 17:00 (16:00) and Monday 07:00 (06:00).</li> <li>2. Outside these times assigned by ATC only.</li> <li>3. After 5.0 DME HND BRNAV equipment necessary.</li> </ol>
<b>IDARO 5E</b>	<b>IDARO FIVE ECHO</b> On track 032° HAN to 5.0 DME HND, LT, on track 213° to ABDAP (Δ), LT, on track 204° to IDARO (Δ). Cross 5.0 DME HND at or above 5000. <b>GPS/FMS RNAV:</b> [A2100+] - FH060[A5000+; L] - FH061 - ABDAP[L] - IDARO.			<ol style="list-style-type: none"> <li>1. Flights have to be able to cross 5.0 DME HND at or above 5000. If unable to comply, request IDARO 1T.</li> <li>2. PDG 13.5 % (820 ft/NM) or more until passing 5000 due to airspace structure.</li> <li>3. After 5.0 DME HND BRNAV equipment necessary.</li> </ol>
<b>IDARO 1T</b>	<b>IDARO ONE TANGO</b> On track 032° HAN to 11.0 DME HND, LT, on track 213° to ABDAP (Δ), LT, on track 204° to IDARO (Δ). Cross 11.0 DME HND at or above 5000. <b>GPS/FMS RNAV:</b> [A2100+] - FH063[A5000+; L] - FH066 - ABDAP[L] - IDARO.			<ol style="list-style-type: none"> <li>1. Flights have to be able to cross 11.0 DME HND at or above 5000. If unable to comply, request alternate departure instructions by ATC.</li> <li>2. PDG 5.5 % (330 ft/NM) or more until passing 5000 due to airspace structure.</li> <li>3. After 11.0 DME HND BRNAV equipment necessary.</li> </ol>
<b>MAKIK 1E</b>	<b>MAKIK ONE ECHO</b> On track 032° HAN to 5.0 DME HND, LT, on track 213° to ABDAP (Δ), RT, on track 270° to RUDOT (Δ), LT, on track 267° to BITBU (Δ), LT, on track 266° to MAKIK (Δ). Cross 5.0 DME HND at or above 5000 and MAKIK at or above FL160. <b>GPS/FMS RNAV:</b> [A2100+] - FH060[A5000+; L] - FH061 - ABDAP[R] - RUDOT[L] - BITBU[L] - MAKIK[F160+].			<ol style="list-style-type: none"> <li>1. Flights have to be able to cross 5.0 DME HND at or above 5000 and MAKIK at or above FL160. If unable to comply, request MAKIK 1T.</li> <li>2. PDG 13.5 % (820 ft/NM) or more until passing 5000 due to airspace structure.</li> <li>3. After 5.0 DME HND BRNAV equipment necessary.</li> </ol>
(Sample: FH060 fly-over way point)				
<b>Contact Langen Radar immediately after take-off!</b>				

FRANKFURT-HAHN  
RWY 03

STANDARD DEPARTURE  
ROUTES – INSTRUMENT  
(SID)

Designator	Route	After Take-Off		Remarks
		Climb to	Contact	
1	2	3	4	5
<b>MAKIK 1T</b>	<b>MAKIK ONE TANGO</b> On track 032° HAN to 11.0 DME HND, LT, on track 213° to ABDAP (Δ), RT, on track 270° to RUDOT (Δ), LT, on track 267° to BITBU (Δ), LT, on track 266° to MAKIK (Δ). Cross 11.0 DME HND at or above 5000 and MAKIK at or above FL160. <b>GPS/FMS RNAV:</b> [A2100+] - FH063[A5000+; L] - FH066 - ABDAP[R] - RUDOT[L] - BITBU[L] - MAKIK[F160+].	5000 ft	Langen Radar 125.600	1. Flights have to be able to cross 11.0 DME HND at or above 5000 and MAKIK at or above FL160. If unable to comply, request MAKIK 1R. 2. PDG 5.5 % (330 ft/NM) or more until passing 5000 due to airspace structure. 3. After 11.0 DME HND BRNAV equipment necessary.
<b>MAKIK 1R</b>	<b>MAKIK ONE ROMEO</b> On track 032° HAN to 11.0 DME HND, LT, on track 213° to ABDAP (Δ), RT, on track 270° to RUDOT (Δ), LT, on track 267° to BITBU (Δ), LT, on track 266° to MAKIK (Δ). Cross MAKIK at or above FL160. <b>GPS/FMS RNAV:</b> [A2100+] - FH063[L] - FH066 - ABDAP[R] - RUDOT[L] - BITBU[L] - MAKIK[F160+].			1. Flights have to be able to cross MAKIK at or above FL160. If unable to comply, request MAKIK 1X. 2. After 11.0 DME HND BRNAV equipment necessary.
<b>MAKIK 1X</b>	<b>MAKIK ONE X-RAY</b> On track 032° HAN to 11.0 DME HND, LT, on track 213° to ABDAP (Δ), RT, on track 270° to RUDOT (Δ), LT, on track 267° to BITBU (Δ), LT, on track 266° to MAKIK (Δ). <b>GPS/FMS RNAV:</b> [A2100+] - FH063[L] - FH066 - ABDAP[R] - RUDOT[L] - BITBU[L] - MAKIK.			After 11.0 DME HND BRNAV equipment necessary.
<b>NOR 5G</b>	<b>NÖRVENICH FIVE GOLF</b> On track 032° HAN to 11.0 DME HND, LT, on R146 NOR to NOR (Δ). Cross 48.0 DME NOR at 5000 or above. <b>GPS/FMS RNAV:</b> [A2100+] - FH065[L] - FH068[A5000+] - NOR.			1. Not to be filed in FPL. 2. Will be assigned by ATC. 3. Not to be used during activity of NLFS. 4. PDG 3.7 % (225 ft/NM) or more until passing 5000 due to airspace structure.
<b>RIDSU 1E</b>	<b>RIDSU ONE ECHO</b> On track 032° HAN to 5.0 DME HND, LT to HAN NDB (Δ); LT, on track 137° to ABSIX (Δ), LT, on track 102° to ULKIG (Δ), RT, on track 103° via SOBRA and DONAB to RIDSU (Δ). Cross 5.0 DME HND at or above 5000. Cross 5.0 NM prior ULKIG at or above FL120. <b>GPS/FMS RNAV:</b> [A2100+] - FH060[A5000+; R] - FH062 - HAN[L] - ABSIX[L] - ULKIG[F120+; R] - SOBRA - DONAB[F120+] - RIDSU.			1. Only available for flights via DONAB at or above FL120. If unable to comply, request alternate departure instructions by ATC. 2. Flights have to be able to cross 5.0 DME HND at or above 5000 and 5.0 NM prior ULKIG at or above FL120. If unable to comply, request RIDSU 1T. 3. PDG 13.5 % (820 ft/NM) or more until passing 5000 due to airspace structure. 4. PDG 4.2 % (255 ft/NM) or more until passing FL120 due to airspace structure. 5. After ABSIX BRNAV equipment necessary.
<b>RIDSU 1T</b>	<b>RIDSU ONE TANGO</b> On track 032° HAN to 11.0 DME HND, LT to HAN NDB (Δ); LT, on track 137° to ABSIX (Δ), LT, on track 102° to ULKIG (Δ), RT, on track 103° via SOBRA and DONAB to RIDSU (Δ). Cross 11.0 DME HND at or above 5000. Cross DONAB at or above FL120. <b>GPS/FMS RNAV:</b> [A2100+] - FH063[A5000+; R] - FH064 - HAN[L] - ABSIX[L] - ULKIG[R] - SOBRA - DONAB[F120+] - RIDSU.			1. Only available for flights via DONAB at or above FL120. If unable to comply, request alternate departure instructions by ATC. 2. Flights have to be able to cross 11.0 DME HND at or above 5000. If unable to comply, request alternate departure instructions by ATC. 3. PDG 5.5 % (330 ft/NM) or more until passing 5000 due to airspace structure. 4. After ABSIX BRNAV equipment necessary.
<b>RUDUS 4E</b>	<b>RUDUS FOUR ECHO</b> On track 032° HAN to 5.0 DME HND, LT to HAN NDB (Δ); LT, on track 137° to ABSIX (Δ), LT, on track 102° to ULKIG (Δ), LT, on track 051° to RUDUS (Δ). Cross 5.0 DME HND at or above 5000. Cross 5.0 NM prior ULKIG at or above FL120 and 9.0 NM prior RUDUS at or above FL140. <b>GPS/FMS RNAV:</b> [A2100+] - FH060[A5000+; R] - FH062 - HAN[L] - ABSIX[L] - ULKIG[F120+; L] - RUDUS[F140+].			1. Only available for flights via RUDUS at or above FL140. If unable to comply, request alternate departure instructions by ATC. 2. Flights have to be able to cross 5.0 DME HND at or above 5000, 5.0 NM prior ULKIG at or above FL120 and 9.0 NM prior RUDUS at or above FL140. If unable to comply, request RUDUS 4T. 3. PDG 13.5 % (820 ft/NM) or more until passing 5000 due to airspace structure. 4. PDG 4.2 % (255 ft/NM) or more until passing FL120 due to airspace structure. 5. After ABSIX BRNAV equipment necessary.
<b>RUDUS 4T</b>	<b>RUDUS FOUR TANGO</b> On track 032° HAN to 11.0 DME HND, LT to HAN NDB (Δ); LT, on track 137° to ABSIX (Δ), LT, on track 102° to ULKIG (Δ), LT, on track 051° to RUDUS (Δ). Cross 11.0 DME HND at or above 5000. Cross RUDUS at or above FL140. <b>GPS/FMS RNAV:</b> [A2100+] - FH063[A5000+; R] - FH064 - HAN[L] - ABSIX[L] - ULKIG[L] - RUDUS[F140+].			1. Only available for flights via RUDUS at or above FL140. If unable to comply, request alternate departure instructions by ATC. 2. Flights have to be able to cross 11.0 DME HND at or above 5000. If unable to comply, request alternate departure instructions by ATC. 3. PDG 5.5 % (330 ft/NM) or more until passing 5000 due to airspace structure. 4. After ABSIX BRNAV equipment necessary.
(Sample: FH060 fly-over way point)				
<b>Contact Langen Radar immediately after take-off!</b>				