

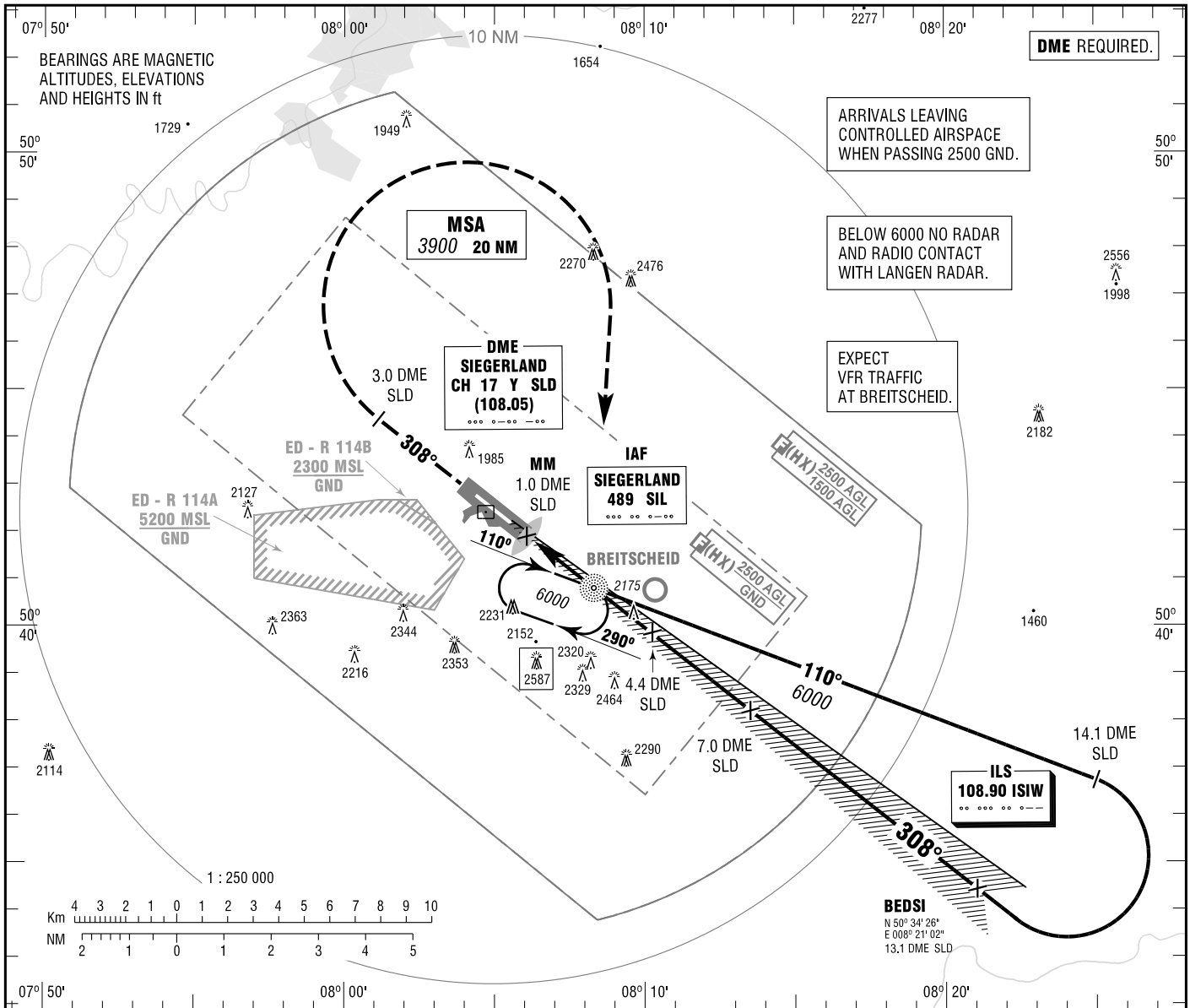
**INSTRUMENT
APPROACH
CHART - ICAO**

VAR 1° E

ELEV 1966
OCH RELATED TO
THR 31 ELEV 1928

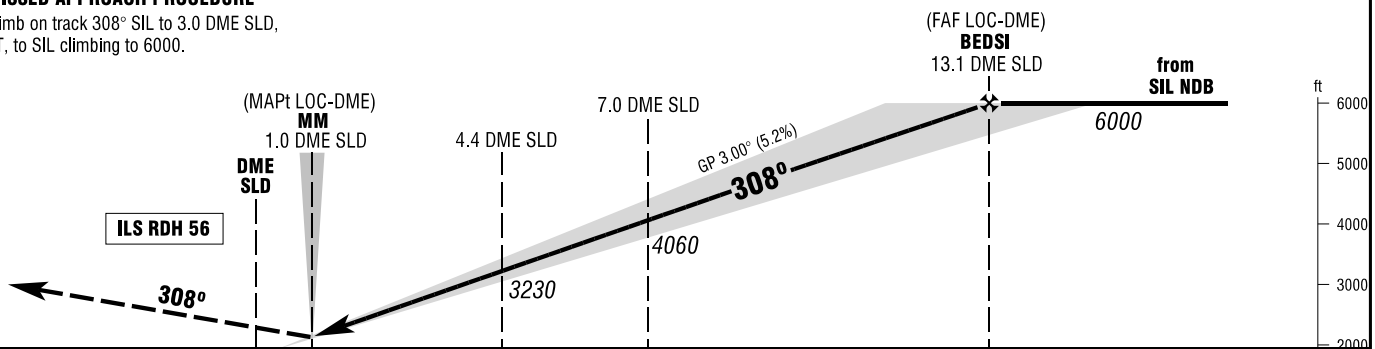
ATIS LANGEN RADAR 128.700
INFO 124.900
120.375

**SIEGERLAND
ILS or LOC
RWY 31**



MISSED APPROACH PROCEDURE

Climb on track 308° SIL to 3.0 DME SLD, RT, to SIL climbing to 6000.



OCA (OCH)	A	B	C*
ILS-DME CAT I	2151 (223)	2161 (233)	2171 (243)
LOC-DME	2430 (500)	2430 (500)	2430 (500)
CIRCLING ** OCH RELATED TO AD ELEV	2430 (460)	2460 (500)	2560 (600)

DME SLD	2	3	4	5	6	7	8	9	10	11	12	13
DIST THR	1.5	2.5	3.5	4.5	5.5	6.5	7.5	8.5	9.5	10.5	11.5	12.5
ALTITUDE	2470	2780	3100	3420	3740	4060	4380	4700	5010	5330	5650	5970

LOC-DME: Timing not authorized for defining the MAPt.

GS	kt	80	100	120	140	160	180
4.4 DME SLD - THR (3.9 NM)	MIN:SEC	2:56	2:20	1:57	1:40	1:28	1:18
Rate of descent (5.2%)	ft / MIN	420	530	640	740	850	960

* PPR. **NORTHEAST OF AERODROME ONLY.

Correction: ATIS, obstacles revised, MSA, OCA(H) obstacles, values & definition.