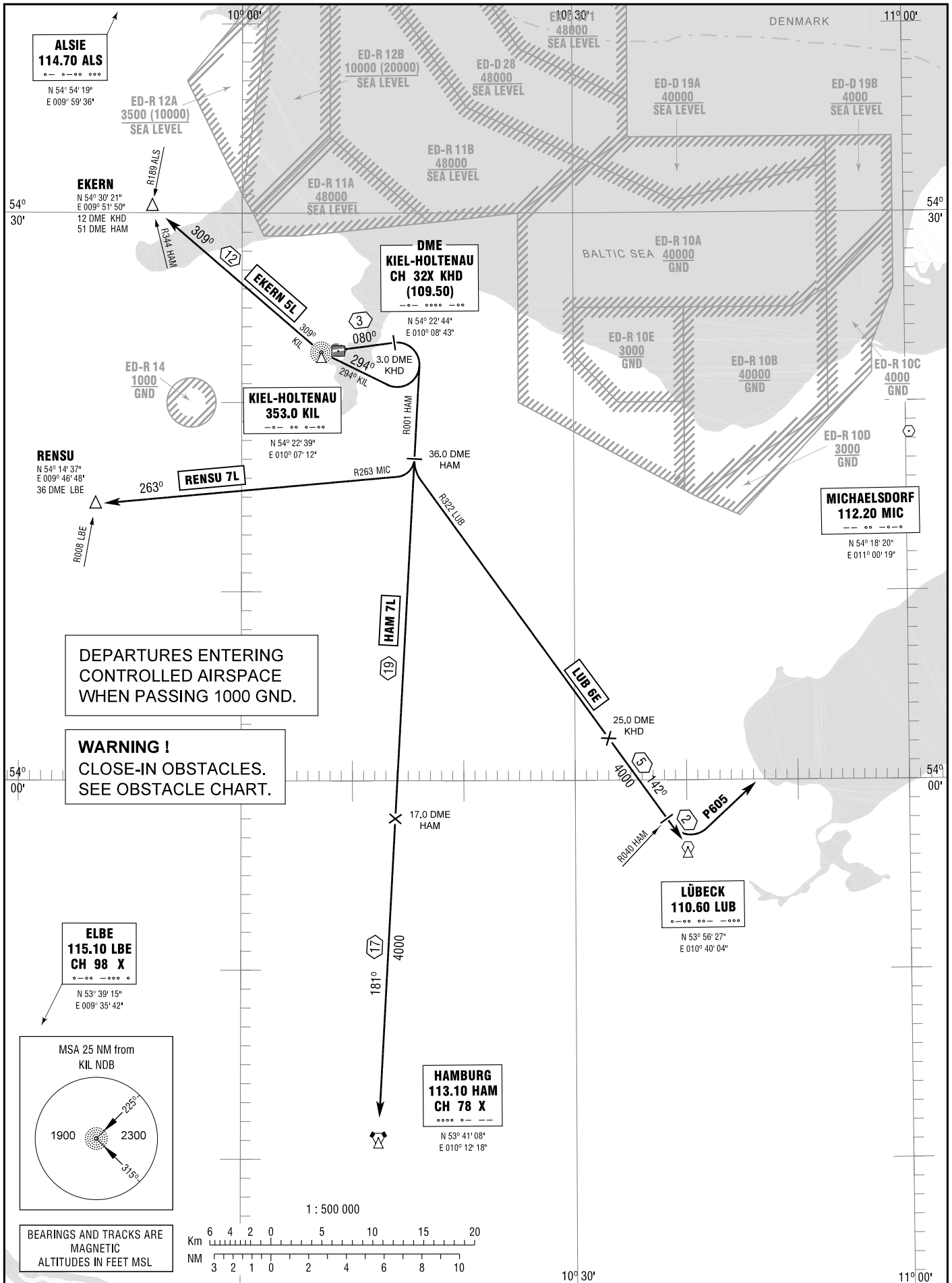


STANDARD DEPARTURE
CHART - INSTRUMENT
(SID)

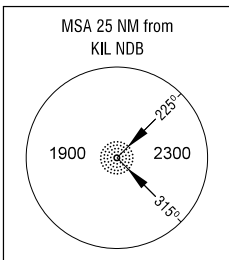
TRANSITION
ALTITUDE 5000
VAR 2° E

GROUND	125.600
KIEL INFO	119.975
BREMEN RADAR	124.075

KIEL-HOLTENAU
RWY 08



Correction: Restricted airspace.



BEARINGS AND TRACKS ARE
MAGNETIC
ALTITUDES IN FEET MSL

