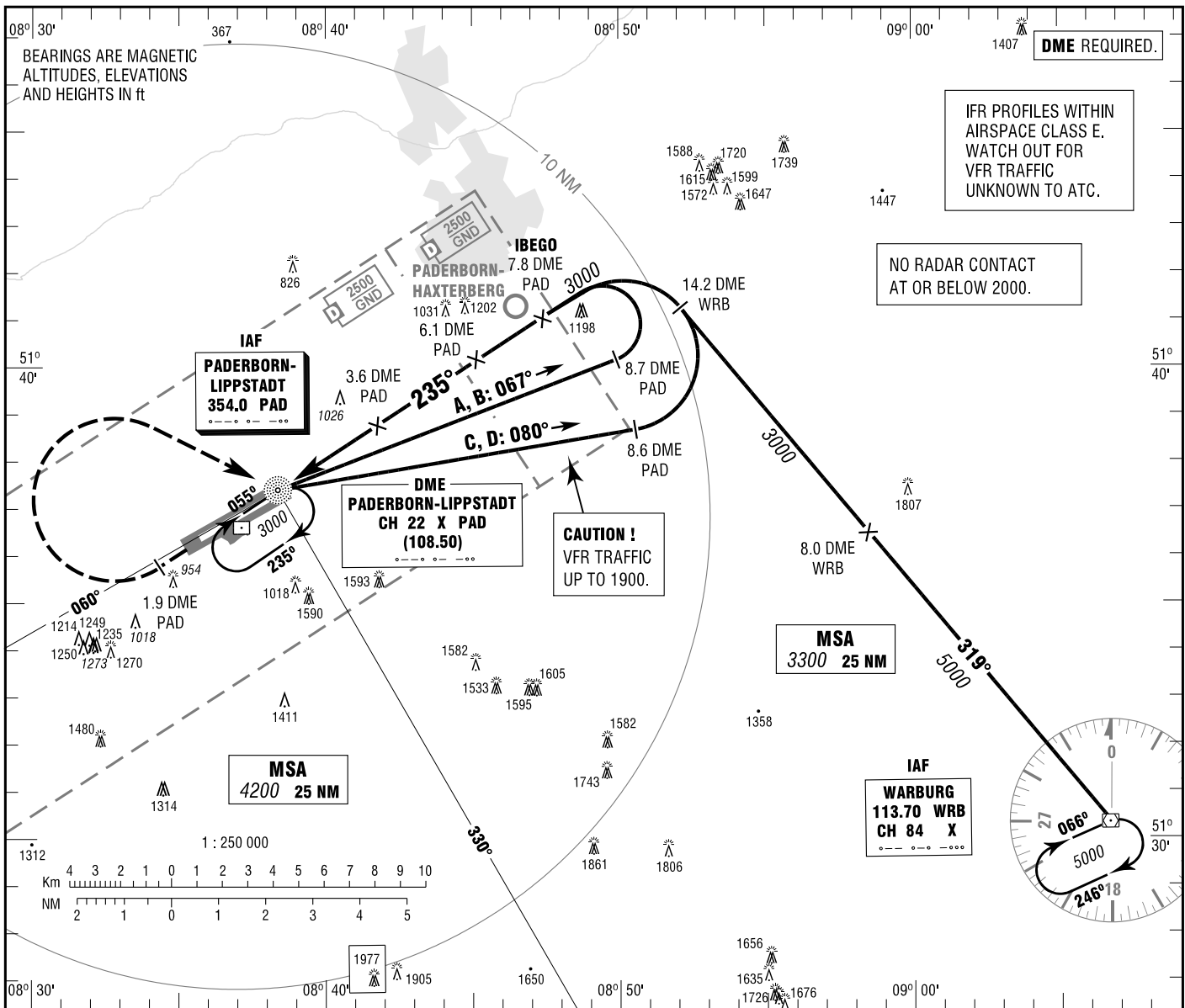


**INSTRUMENT
APPROACH
CHART - ICAO**

VAR 1° E
ELEV 699
OCH RELATED TO
THR 24 ELEV 674

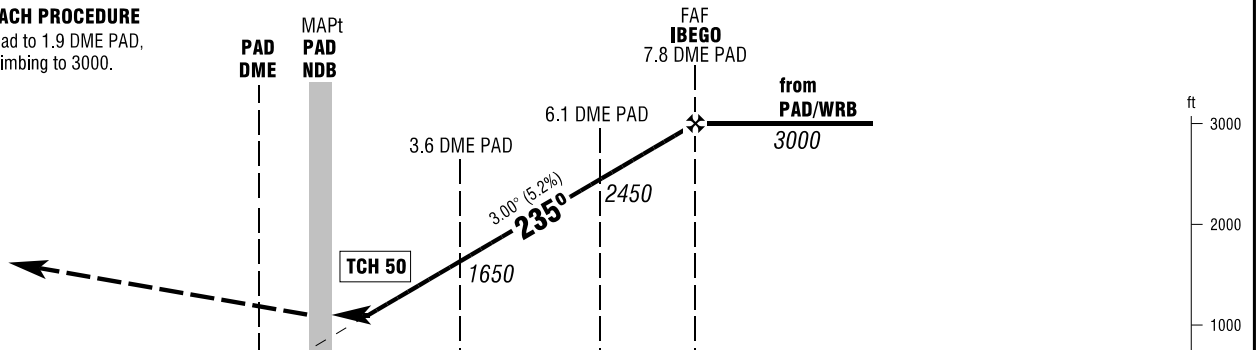
PADERBORN ATIS 125.725
LANGEN RADAR 125.225
PADERBORN TOWER 133.375
PADERBORN GROUND 121.925

PADERBORN/LIPPSTADT
NDB
RWY 24



MISSED APPROACH PROCEDURE

Climb straight ahead to 1.9 DME PAD,
RT to PAD NDB climbing to 3000.



NM 6 5 4 3 2 1 0 1 2 3 4 5 6 7 8 9 10 11 12 13 14 NM

OCA (OCH)	A	B	C	D
NDB-DME	1240 (560)	1240 (560)	1240 (560)	1240 (560)
CIRCLING * OCH RELATED TO AD ELEV	1250 (560)	1320 (620)	1670 (970)	1670 (970)

DME PAD	3	4	5	6	7
DIST THR	2.3	3.3	4.3	5.3	6.3
ALTITUDE	1460	1780	2100	2420	2730

Timing not authorized for defining the MAPt.

GS	kt	80	100	120	2730	160	180
6.1 DME PAD - MAPt (5.0 NM)	MIN:SEC	3:45	3:00	2:30	2:09	1:53	1:40
Rate of descent (5.2%)	ft / MIN	420	530	640	740	850	960

* NORTH OF AERODROME ONLY.

Correction: OCA(H) obstacles & values.