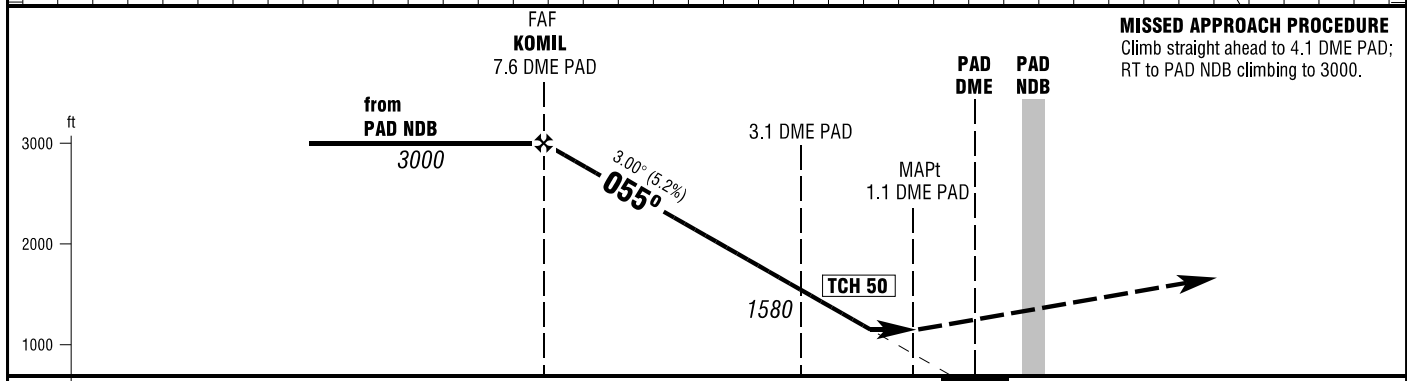
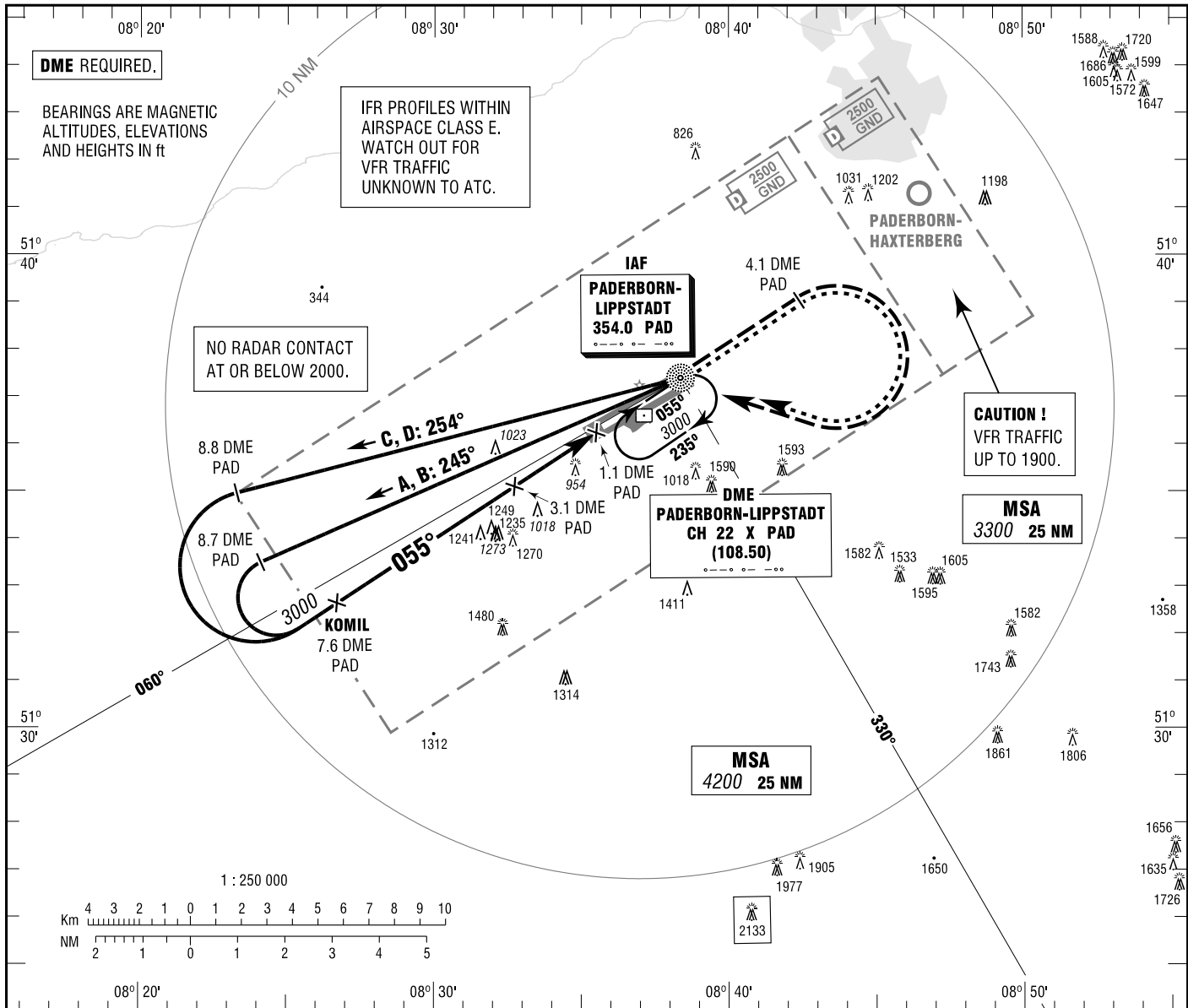


**PADERBORN/LIPPSTADT**  
NDB  
RWY 06

PADERBORN ATIS 125.725  
LANGEN RADAR 125.225  
PADERBORN TOWER 133.375  
PADERBORN GROUND 121.925

ELEV 699  
OCH RELATED TO VAR 1° E  
THR 06 ELEV 699

**INSTRUMENT**  
**APPROACH**  
**CHART - ICAO**



**MISSED APPROACH PROCEDURE**  
Climb straight ahead to 4.1 DME PAD;  
RT to PAD NDB climbing to 3000.

OCA (OCH)	A	B	C	D
NDB-DME	1270 (570)	1270 (570)	1270 (570)	1270 (570)
CIRCLING * OCH RELATED TO AD ELEV	1250 (560)	1320 (620)	1670 (970)	1670 (970)

DME PAD	7	6	5	4	3
DIST THR	6.4	5.4	4.4	3.4	2.4
ALTITUDE	2790	2470	2150	1840	1520

Timing not authorized for defining the MAPt.

GS	kt	80	100	120	140	160	180
3.1 DME PAD - MAPt (2.0 NM)	MIN:SEC	1:30	1:12	1:00	0:51	0:45	0:40
Rate of descent (5.2%)	ft / MIN	420	530	640	740	850	960

\* NORTH OF AERODROME ONLY.

Correction: OCA(H) obstacles & values.