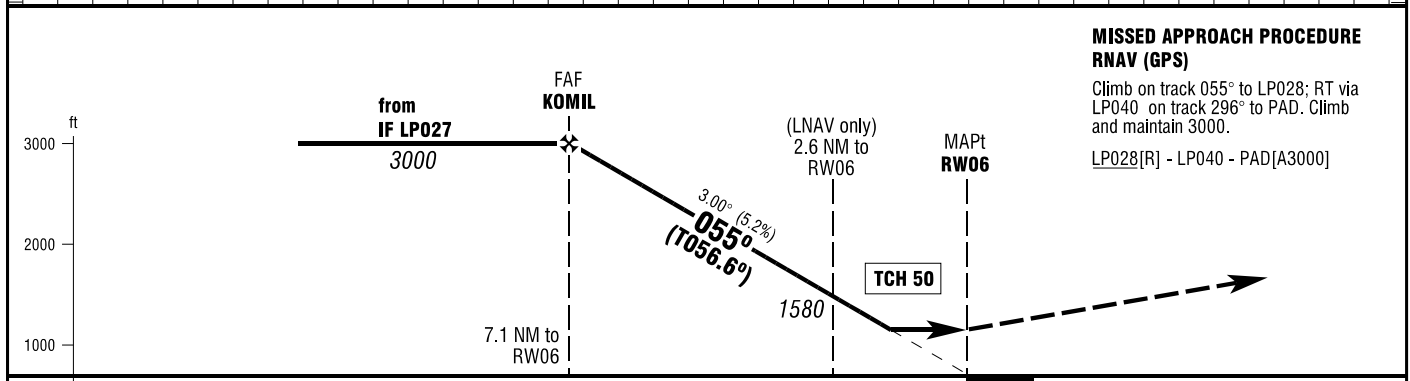
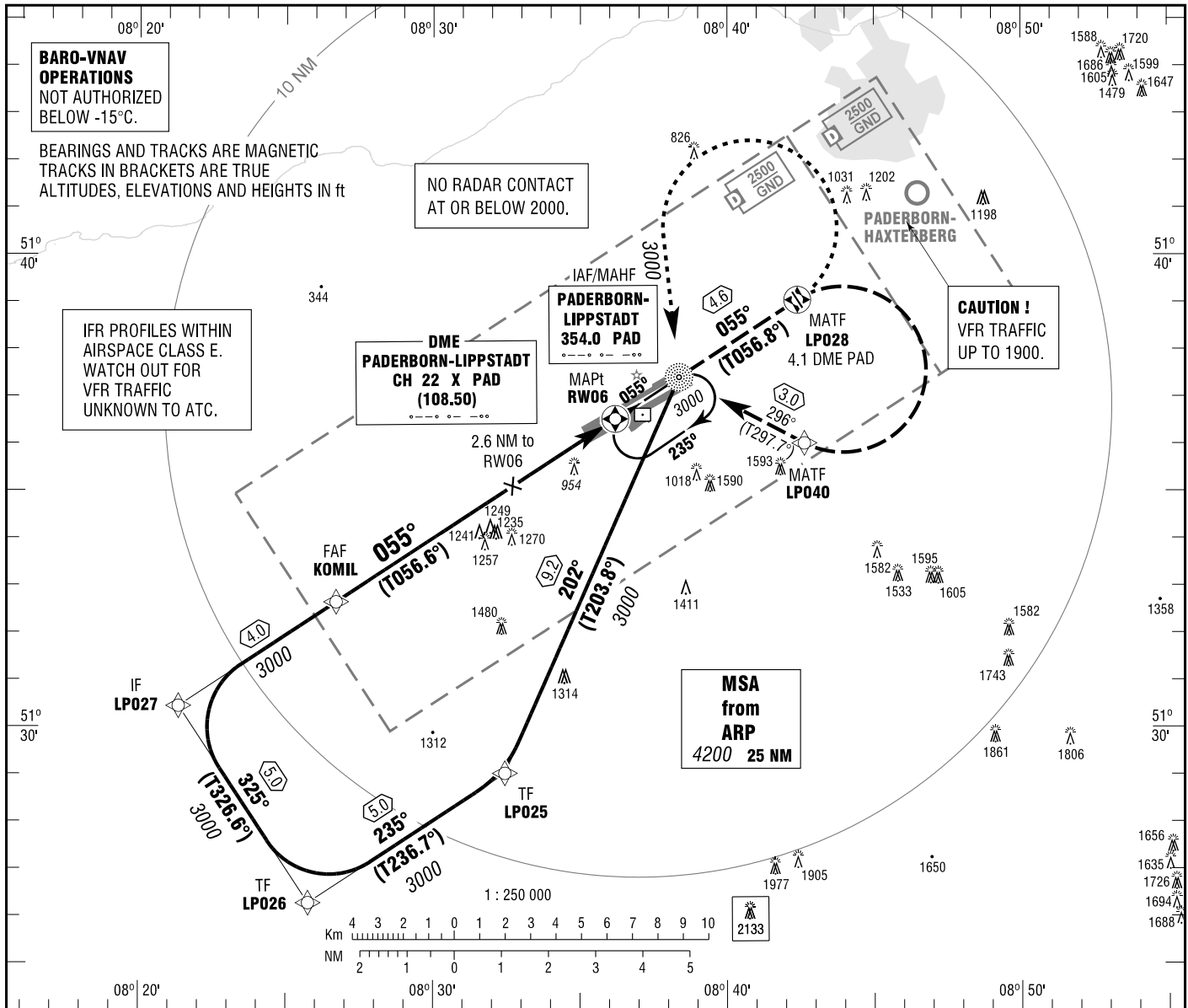


PADERBORN/LIPPSTADT
RNAV (GPS) RWY 06
EGNOS CH 73284 E06A

PADERBORN ATIS 125.725
LANGEN RADAR 125.225
PADERBORN TOWER 133.375
PADERBORN GROUND 121.925

ELEV 699
OCH RELATED TO VAR 1° E
THR 06 ELEV 699

**INSTRUMENT
APPROACH
CHART - ICAO**



**MISSED APPROACH PROCEDURE
RNAV (GPS)**
Climb on track 055° to LP028; RT via LP040 on track 296° to PAD. Climb and maintain 3000.
LP028[R] - LP040 - PAD[A3000]

OCA (OCH)	A	B	C	D
LNAV	1190 (490)	1190 (490)	1190 (490)	1190 (490)
LNAV / VNAV	1190 (490)	1190 (490)	1190 (490)	1190 (490)
LPV	1190 (490)	1190 (490)	1190 (490)	1190 (490)

DIST THR / RW06	7	6	5	4	3	2
ALTITUDE	2980	2660	2350	2030	1710	1390

Timing not authorized for defining the MAPt.

GS	kt	80	100	120	140	160	180
KOMIL - RW06 (7.1 NM)	MIN:SEC	5:20	4:16	3:33	3:03	2:40	2:22
Rate of descent (5.2%)	ft / MIN	420	530	640	740	850	960

Correction: Note added.