

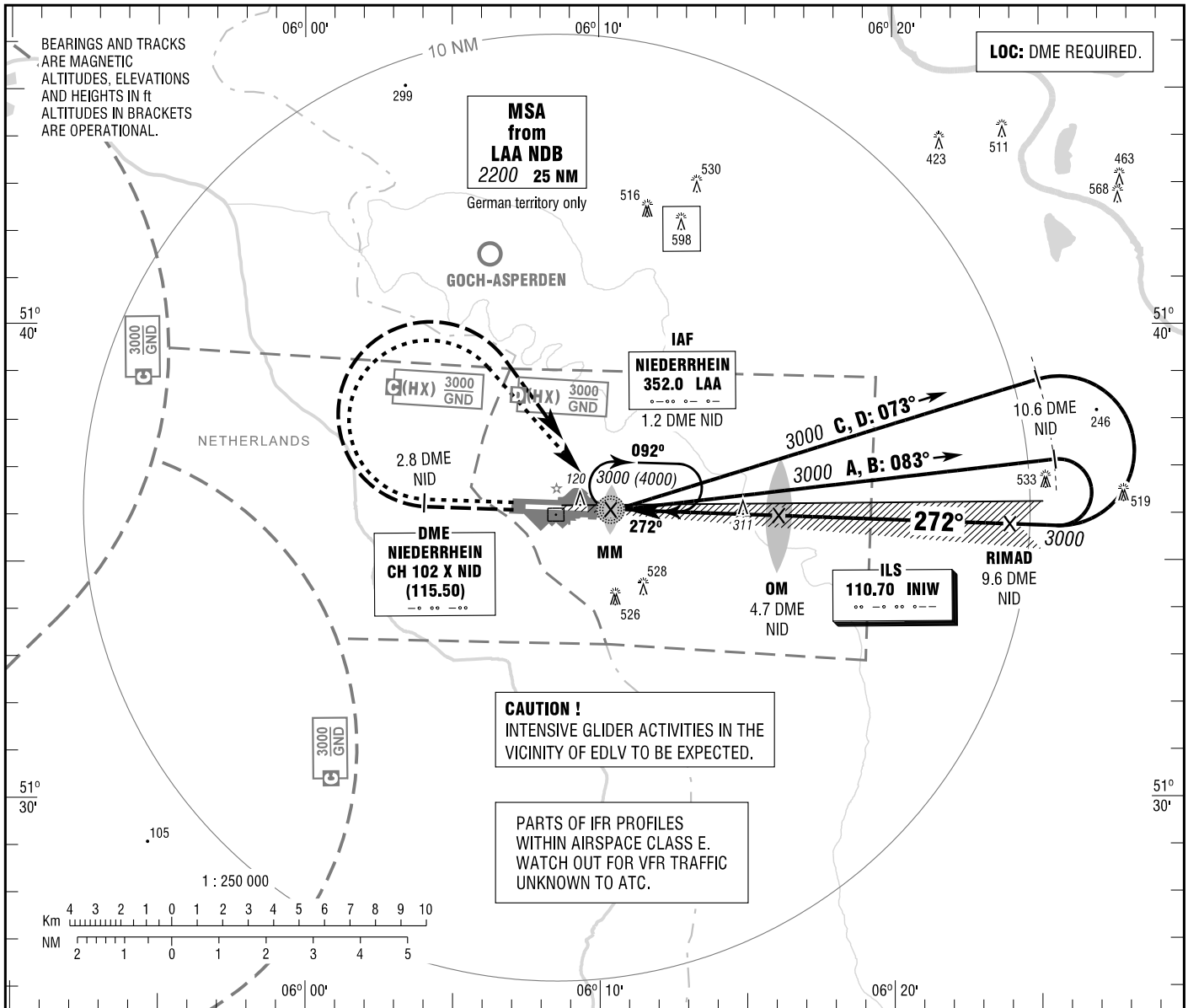
**INSTRUMENT
APPROACH
CHART - ICAO**

VAR 0°

ELEV 106
OCH RELATED TO
THR 27 ELEV 105

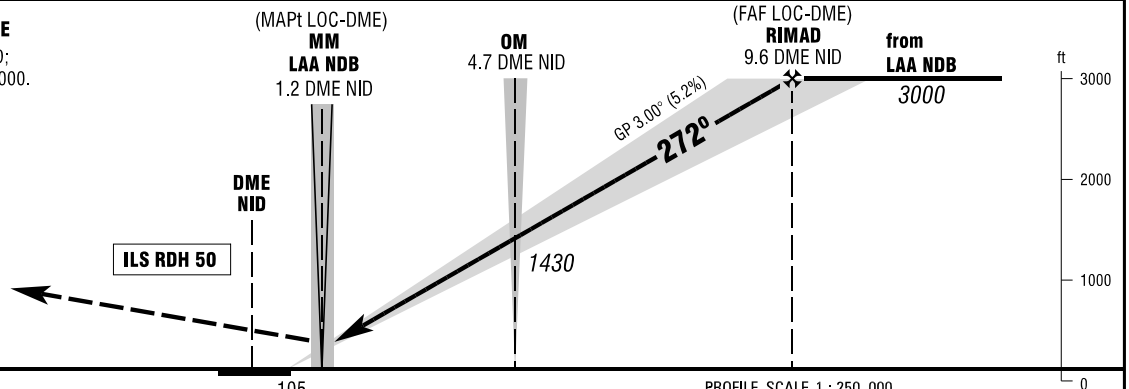
ATIS 124.450
LANGEN RADAR 128.500
TOWER 129.400

**NIEDERRHEIN
ILS CAT II & III or LOC
RWY 27**



MISSED APPROACH PROCEDURE

Climb straight ahead to 2.8 DME NID;
RT, inbound LAA NDB climbing to 3000.
Climb in holding to 4000.



OCA (OCH)	A	B	C	D
ILS CAT I	251 (146)	261 (156)	271 (166)	280 (175)
ILS CAT II	162 (57)	179 (74)	192 (87)	205 (100)
LOC-DME	560 (460)	560 (460)	560 (460)	560 (460)

DME NID	2	3	4	5	6	7	8	9
DIST THR	1.3	2.3	3.3	4.3	5.3	6.3	7.3	8.3
ALTITUDE	570	890	1210	1530	1850	2170	2480	2800

LOC-DME: Timing not authorized for defining the MAPt.

GS	kt	80	100	120	140	160	180
OM - THR (4.0 NM)	MIN:SEC	3:00	2:24	2:00	1:43	1:30	1:20
Rate of descent (5.2%)	ft / MIN	420	530	640	740	850	960

CAT IIIA AND CAT IIIB (MNM RVR 75m) APPROVED.

Correction: Missed approach.