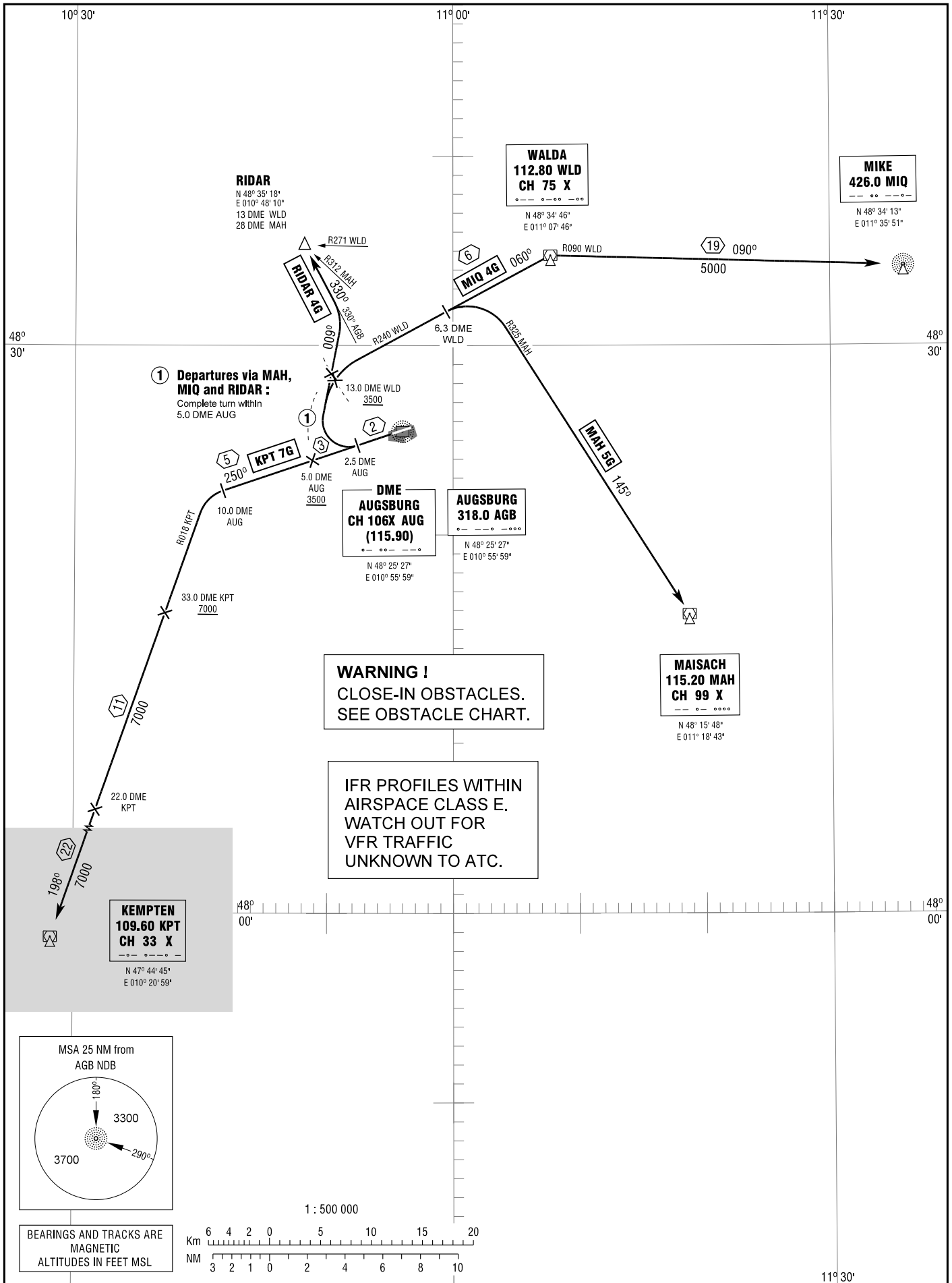


STANDARD DEPARTURE  
CHART - INSTRUMENT  
(SID)

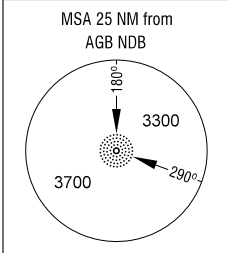
TRANSITION  
ALTITUDE 5000  
VAR 2° E

ATIS	124.575
TOWER	124.975
MÜNCHEN RADAR	128.250

AUGSBURG  
RWY 25



Correction: Note added.



BEARINGS AND TRACKS ARE  
MAGNETIC  
ALTITUDES IN FEET MSL

