

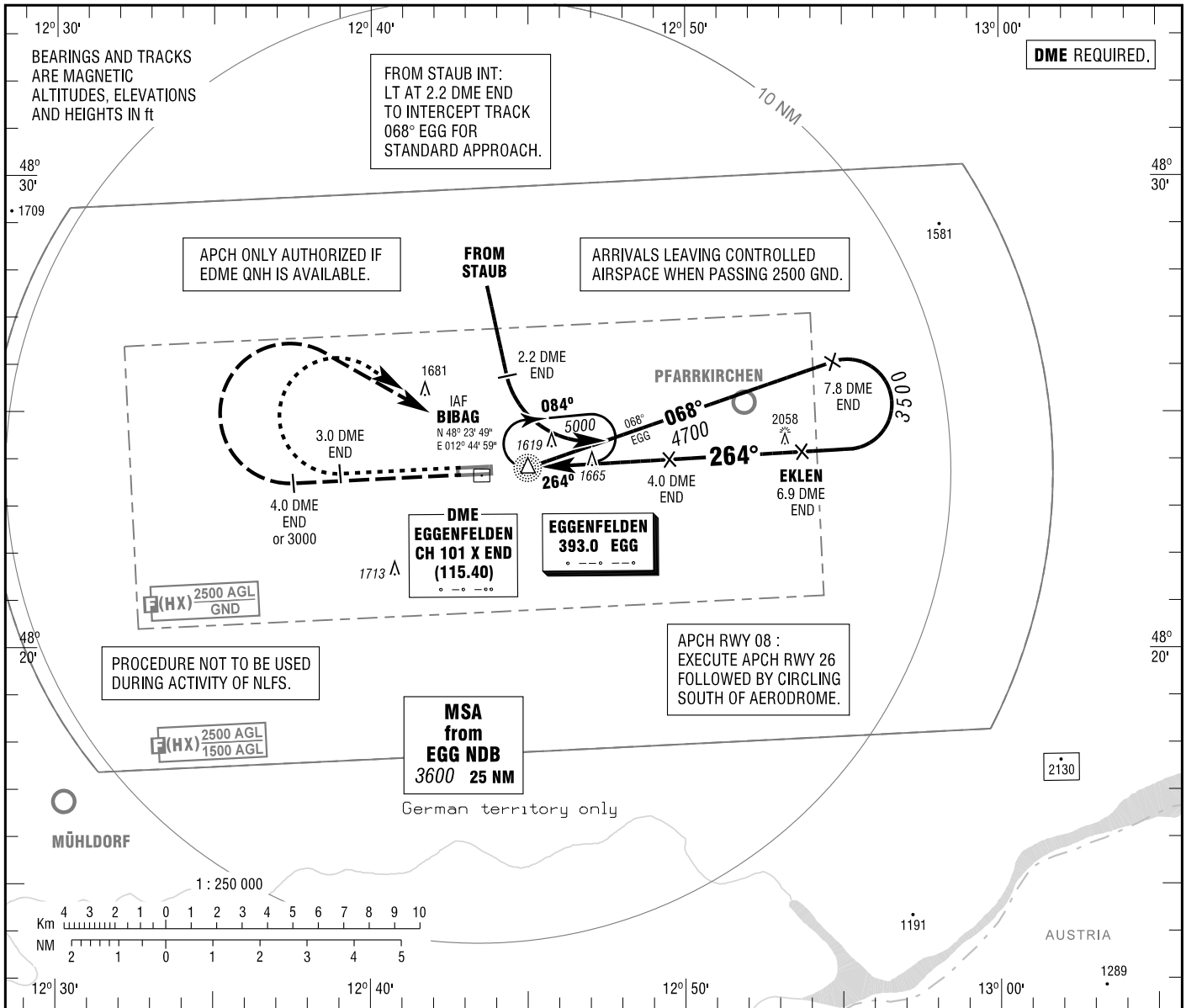
INSTRUMENT  
APPROACH  
CHART - ICAO

VAR 3° E

ELEV 1342  
OCH RELATED TO  
THR 26 ELEV 1333

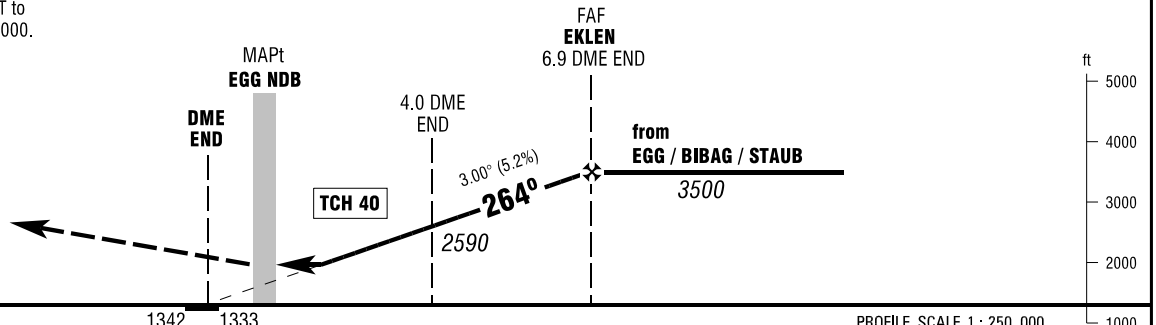
ATIS  
MÜNCHEN RADAR 125.075  
INFO 129.550  
120.300

EGGENFELDEN  
NDB  
RWY 26



**MISSED APPROACH PROCEDURE**

Climb straight ahead to 4.0 DME END or 3000, whichever is earlier, RT to EGG NDB / BIBAG climbing to 5000.



OCA (OCH)	A	B
NDB-DME	1920 (580)	1920 (580)
CIRCLING * OCH RELATED TO AD ELEV	1920 (580)	2010 (670)

DME END	2	3	4	5	6
DIST THR	1.8	2.8	3.8	4.8	5.8
ALTITUDE	1950	2270	2590	2910	3220

Timing not authorized for defining the MAPt.

GS	kt	80	100	120	140
4.0 DME END - EGG NDB (3.0 NM)	MIN:SEC	2:15	1:48	1:30	1:17
Rate of descent (5.2%)	ft / MIN	420	530	640	740

\* SOUTH OF AERODROME ONLY.

Correction: EKLEN position, TCH, crossing altitudes.