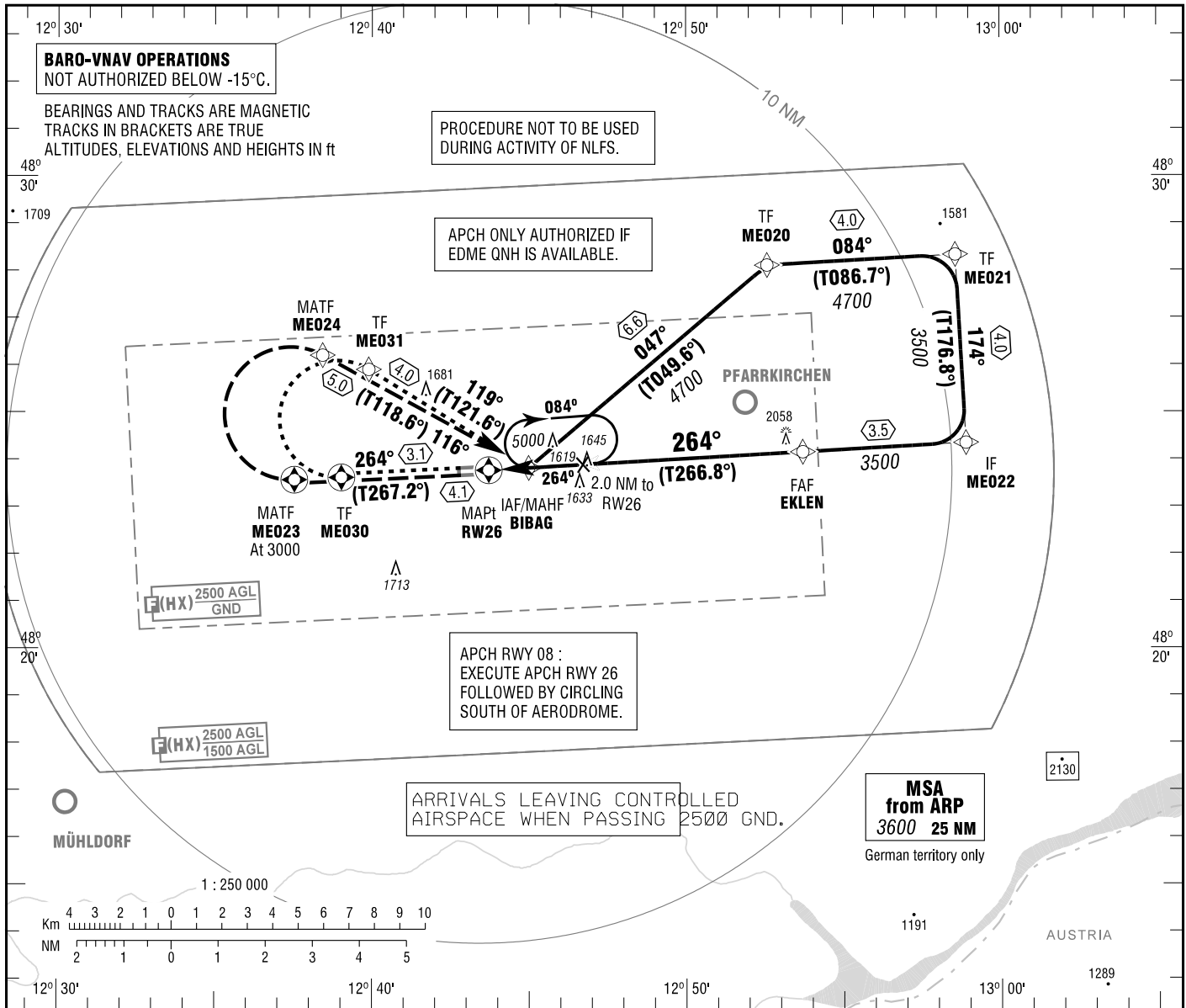


EGGENFELDEN
RNAV (GPS) RWY 26
EGNOS CH 67841 E26A

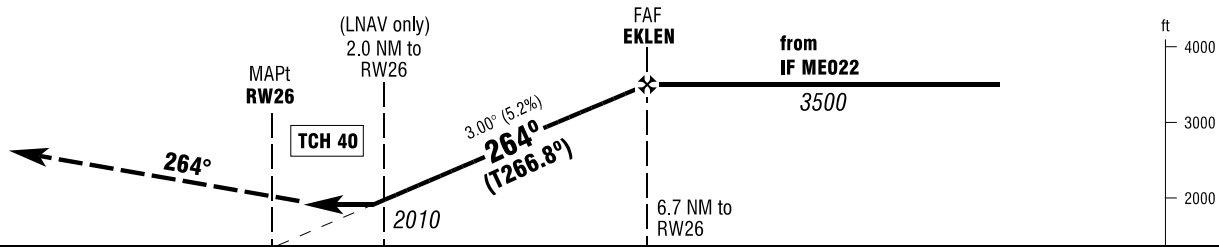
ATIS	125.075	ELEV	1342
MÜNCHEN RADAR	129.550	OCH RELATED TO	VAR 3° E
INFO	120.300	THR 26	ELEV 1333

INSTRUMENT
APPROACH
CHART - ICAO



On track 264° to ME023 climbing to 3000;
RT, via ME024 on track 116° to BIBAG climbing to 5000.

ME023 - [A3000, R] - ME024 - BIBAG[A5000]



OCA (OCH)	A	B		
LNAV	1900 (560)	1900 (560)		
LNAV / VNAV	1880 (550)	1880 (550)		
LPV	1900 (560)	1900 (560)		
CIRCLING	1920 (580)	2010 (670)		

DIST THR / RW26	2	3	4	5	6
ALTITUDE	2010	2330	2650	2970	3290

Timing not authorized for defining the MAPt.

GS	kt	80	100	120	140
EKLEN - RW26 (6.7 NM)	MIN:SEC	5:02	4:01	3:21	2:52
Rate of descent (5.2%)	ft / MIN	420	530	640	740

* SOUTH OF AERODROME ONLY.

Correction: Procedure, OCA(H) values, TCH, crossing altitudes, timing.