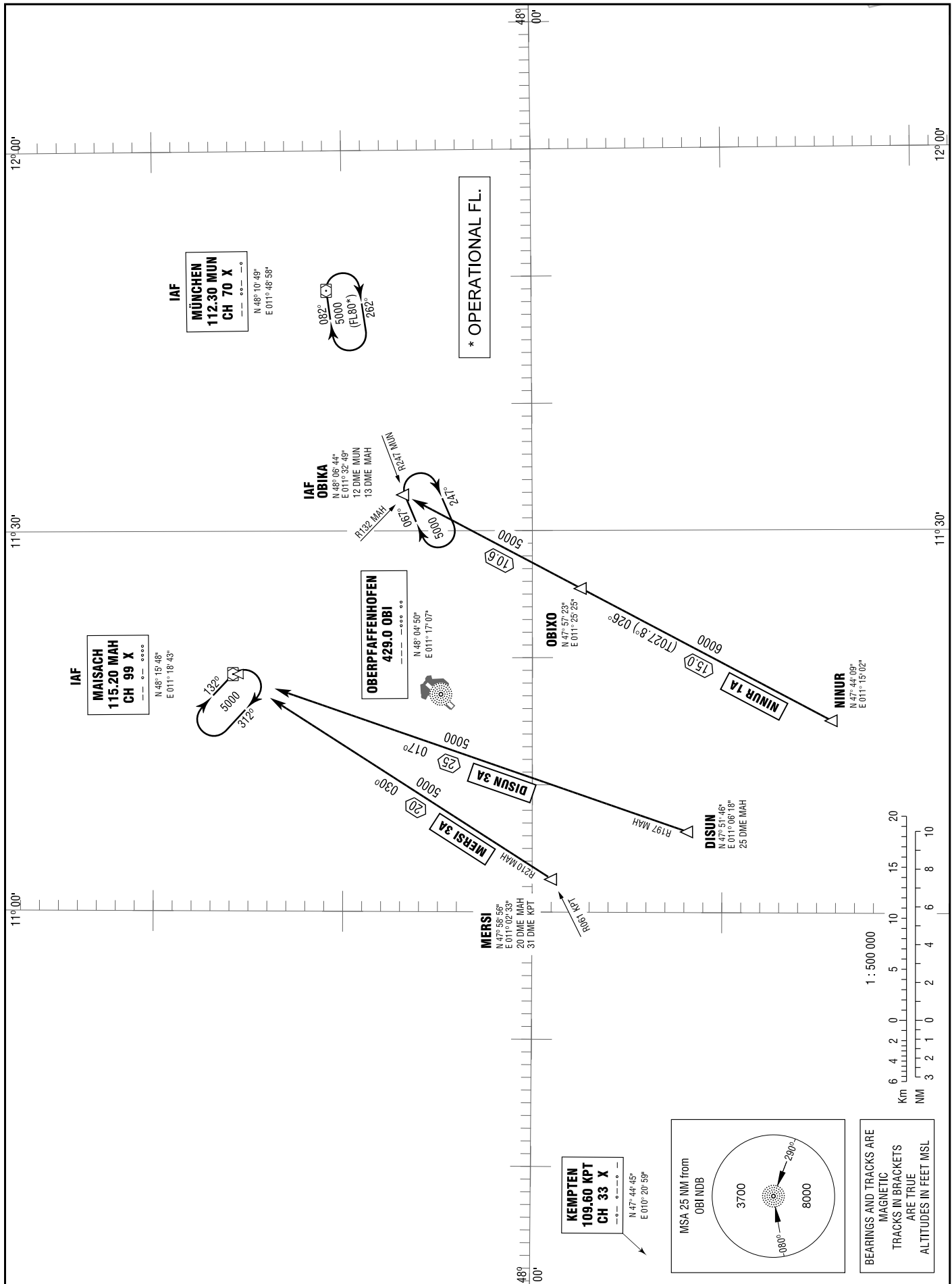


OBERPFAFFENHOFEN
RWY 22

MÜNCHEN RADAR 127.950 (S)
MÜNCHEN ARRIVAL 120.775 (S)
TOWER 119.550

TRANSITION
ALTITUDE 5000
VAR 2° E

STANDARD ARRIVAL
CHART - INSTRUMENT
(STAR)



STANDARD ARRIVAL
ROUTES – INSTRUMENT
(STAR)

OBERPFAFFENHOFEN
RWY 22

Designator	Identification Significant Points	Mag (True) Track	Dist NM	MNM IFR Cruising Level	Remarks
1	2	3	4	5	6
DISUN 3A	DISUN THREE ALPHA				
	△ DISUN				
	△ Maisach DVOR/DME	017	25	5000	
NINUR 1A	NINUR ONE ALPHA				BRNAV equipment necessary.
	△ NINUR				
	△ OBIXO	026 (027.8)	15.0	6000	
	△ OBIKA	026 (027.8)	10.6	5000	
MERSI 3A	MERSI THREE ALPHA				Only for flights at FL 120 or below.
	△ MERSI				
	△ Maisach DVOR/DME	030	20	5000	