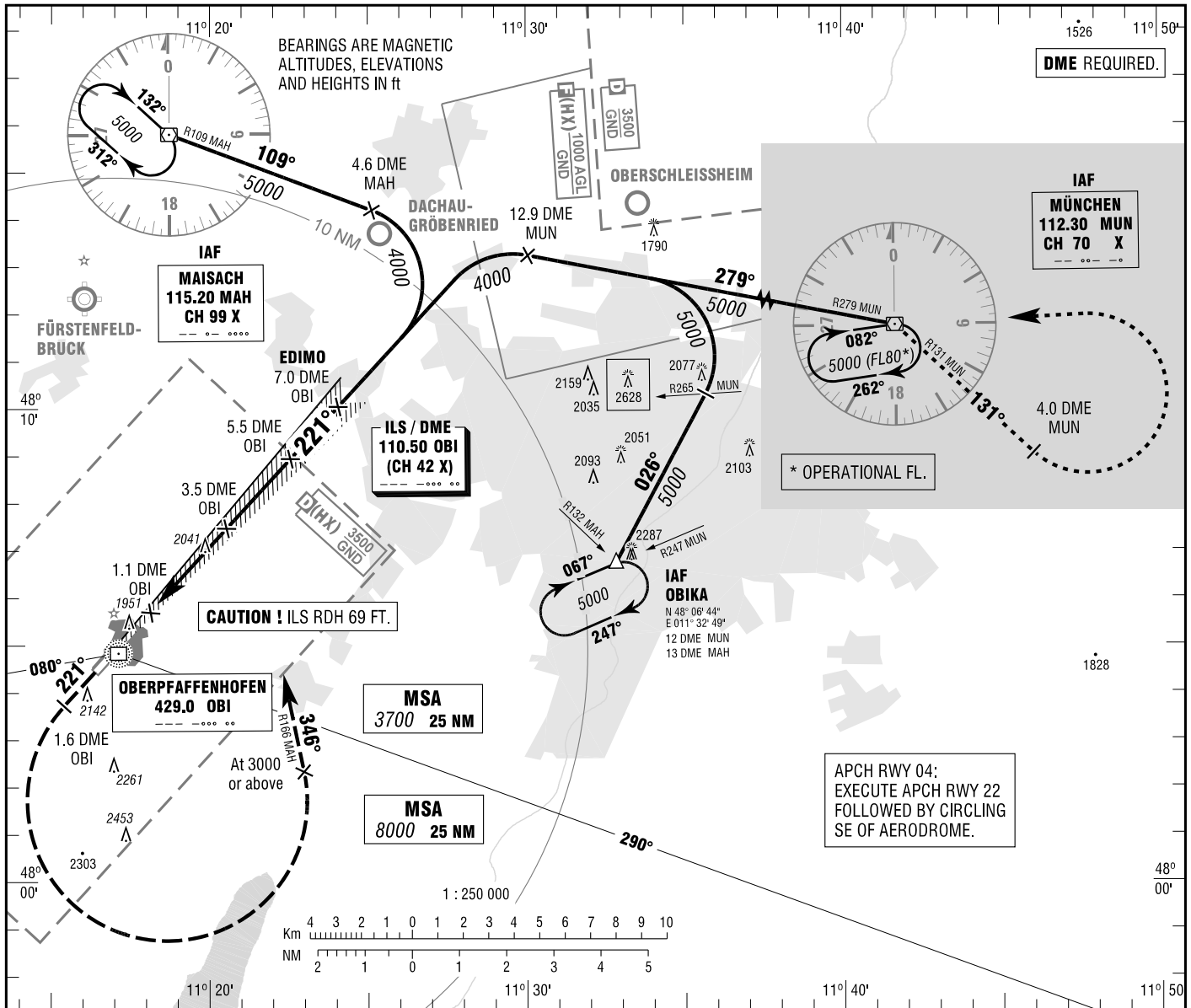


INSTRUMENT APPROACH CHART - ICAO

VAR 2° E
ELEV 1947
OCH RELATED TO THR 22 ELEV 1890

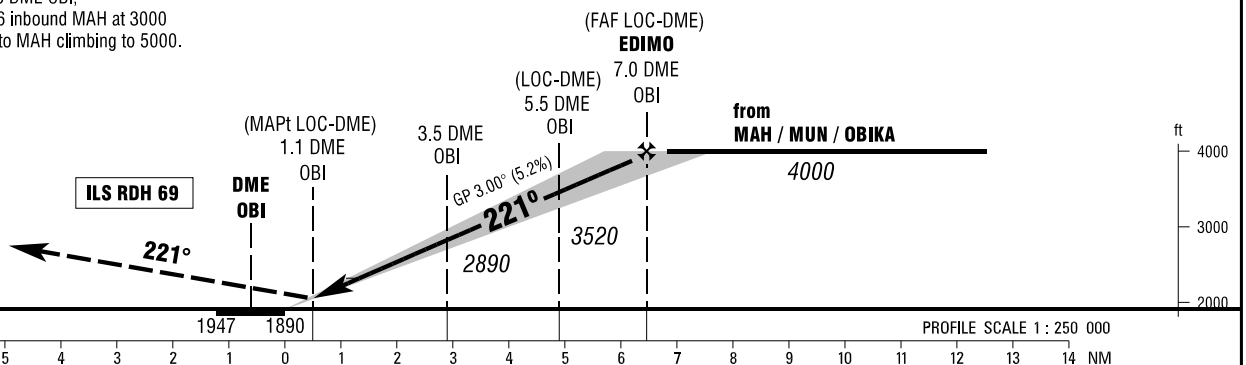
MÜNCHEN RADAR 127.950 (S)
MÜNCHEN ARRIVAL 120.775 (S)
TOWER 119.550

OBERPFAFFENHOFEN
ILS or LOC
RWY 22



MISSED APPROACH PROCEDURE

On track 221° to 1.6 DME OBI;
LT to intercept R166 inbound MAH at 3000 or above. Continue to MAH climbing to 5000.



OCA (OCH)	A	B	C	D
ILS/DME CAT I	2082 (192)	2092 (202)	2102 (212)	2112 (222)
LOC-DME	2290 (400)	2290 (400)	2290 (400)	2290 (400)
CIRCLING*	2440 (490)	2560 (610)	2850 (900)	2850 (900)

DME OBI	2	3	4	5	6
DIST THR	1.4	2.4	3.4	4.4	5.4
ALTITUDE	2410	2730	3050	3360	3680

LOC-DME: Timing not authorized for defining the MAPt.

GS	kt	80	100	120	140	160	180
3.5 DME OBI-THR (2.9 NM)	MIN:SEC	2:11	1:44	1:27	1:15	1:05	0:58
Rate of descent (5.2%)	ft / MIN	420	530	630	740	840	950

*SOUTH-EAST OF AERODROME ONLY. NOTE: MNM GROUND VISIBILITY REQUIRED 1000m.

Correction: Circling OCA(H) values & obstacles.