

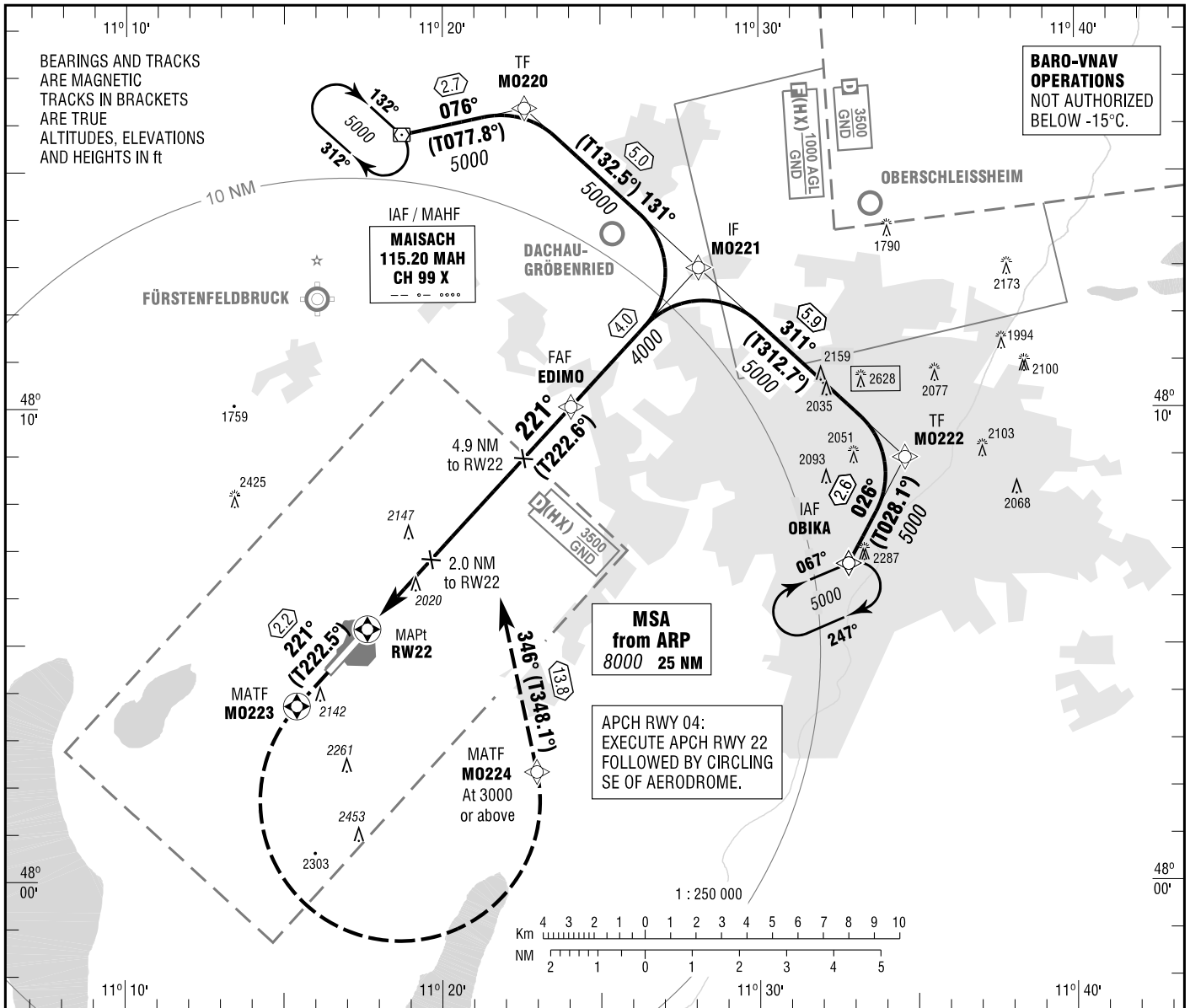
**INSTRUMENT
APPROACH
CHART - ICAO**

VAR 2° E

ELEV 1947
OCH RELATED TO
THR 22 ELEV 1890

MÜNCHEN RADAR 127.950 (S)
MÜNCHEN ARRIVAL 120.775 (S)
TOWER 119.550

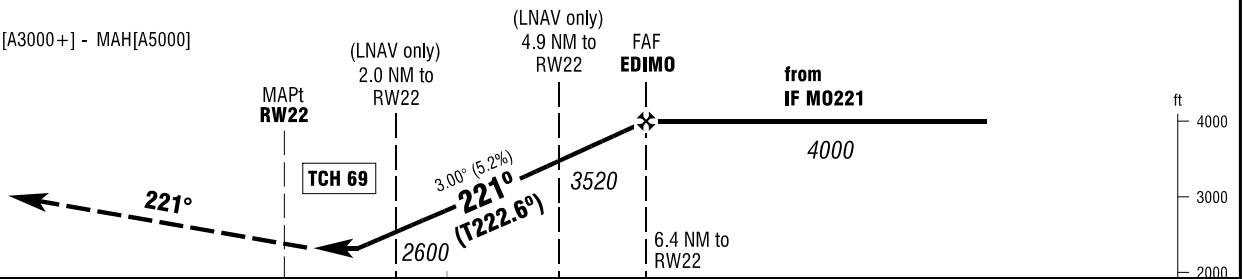
**OBERPFAFFENHOFEN
RNAV (GPS) RWY 22
EGNOS CH 88806 E22A**



MISSED APPROACH PROCEDURE

On track 221° to M0223; LT to M0224 climbing to 3000 or above; on track 346° continue to MAH climbing to 5000.

M0223[L] - M0224[A3000+] - MAH[A5000]



1947 1890 PROFILE SCALE 1 : 250 000

OCA (OCH)	A	B	C	D
LNAV	2310 (420)	2310 (420)	2310 (420)	2310 (420)
LNAV / VNAV	2270 (380)	2270 (380)	2270 (380)	2270 (380)
LPV	2310 (420)	2310 (420)	2310 (420)	2310 (420)
CIRCLING*	2440 (490)	2560 (610)	2850 (900)	2850 (900)

DIST THR / RW22	2	3	4	5	6
ALTITUDE	2600	2920	3240	3560	3870

Timing not authorized for defining the MAPt.

GS	kt	80	100	120	140	160	180
EDIMO - RW22 (6.4 NM)	MIN:SEC	4:48	3:50	3:12	2:45	2:24	2:08
Rate of descent (5.2%)	ft / MIN	420	530	630	740	840	950

*SOUTH-EAST OF AERODROME ONLY. NOTE: MNM GROUND VISIBILITY REQUIRED 1500m.

Correction: LPV established, OBI DME withdrawn, OCA(H) values, missed apch.