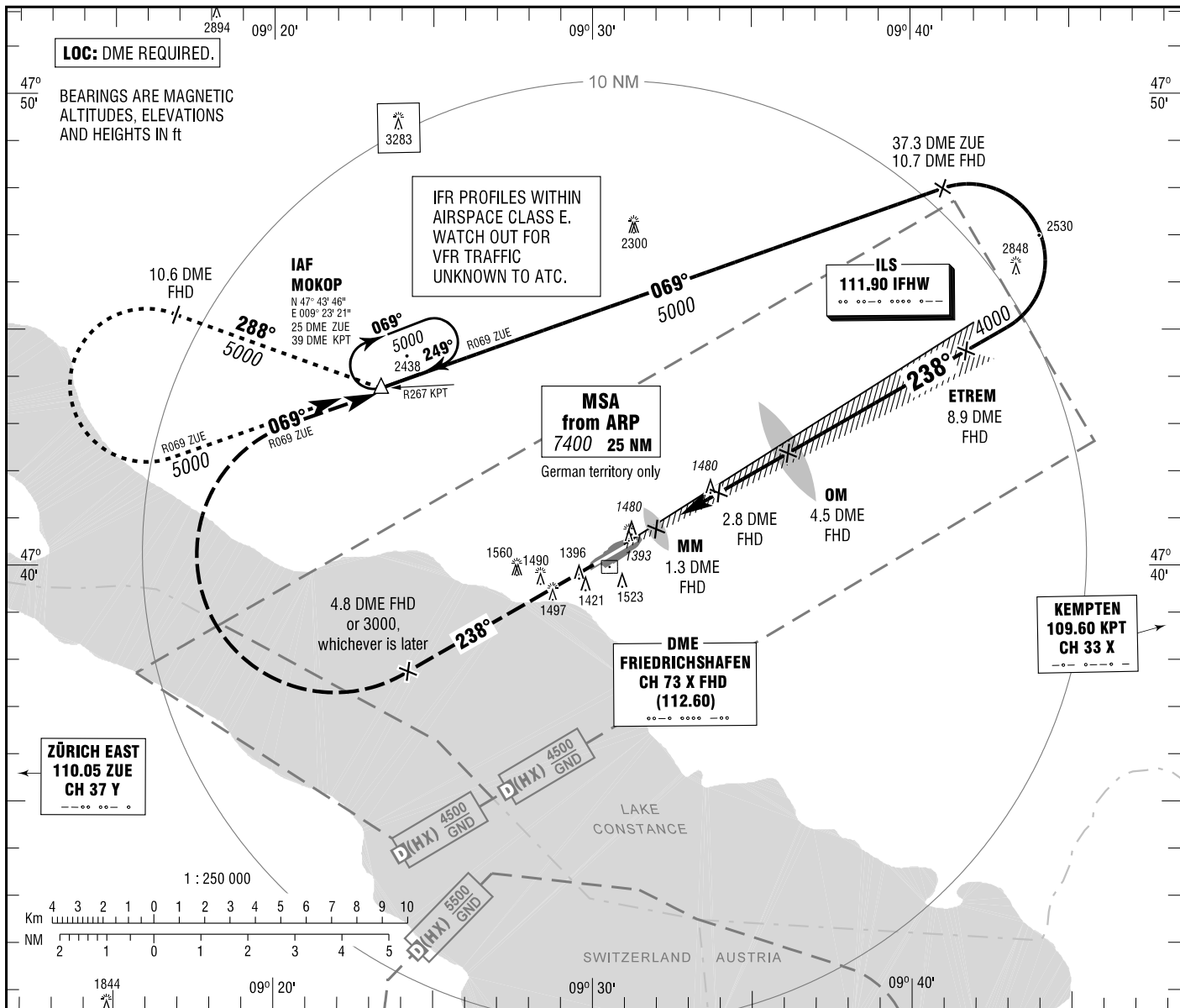


FRIEDRICHSHAFEN
ILS CAT II & III or LOC
RWY 24

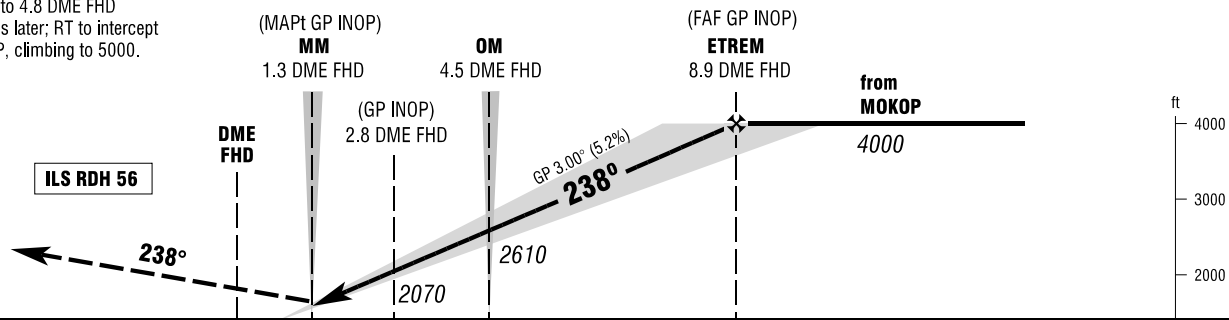
ATIS	129.600	ELEV 1367
ZÜRICH ARRIVAL	119.925	OCH RELATED TO VAR 2° E
TOWER	120.075	THR 24 ELEV 1367

INSTRUMENT
APPROACH
CHART - ICAO



MISSED APPROACH PROCEDURE

Climb on track 238° to 4.8 DME FHD
or 3000, whichever is later; RT to intercept
R069 ZUE to MOKOP, climbing to 5000.



NM 6 5 4 3 2 1 0 1 2 3 4 5 6 7 8 9 10 11 12 13 14 NM

PROFILE SCALE 1 : 250 000

OCA (OCH)	A	B	C	D
ILS CAT I	1525 (157)	1534 (166)	1631 (263)	1641 (273)
ILS CAT II	1436 (68)	1452 (84)	1466 (98)	1479 (111)
LOC-DME	1730 (360)	1730 (360)	1730 (360)	1730 (360)

DME FHD	2	3	4	5	6	7	8
DIST THR	1.2	2.2	3.2	4.2	5.2	6.2	7.2
ALTITUDE	1810	2130	2450	2770	3080	3400	3720

Timing not authorized for defining the MAPt.

GS	kt	80	100	120	140	160	180
OM - THR (3.7 NM)	MIN:SEC	2:47	2:13	1:51	1:35	1:23	1:14
Rate of descent (5.2%)	ft / MIN	420	530	640	740	850	960

CAT IIIa and CAT IIIb (MNM RVR 75m) approved.

Correction: Obstacles revised, OCA(H) values & obstacles revised, note added.