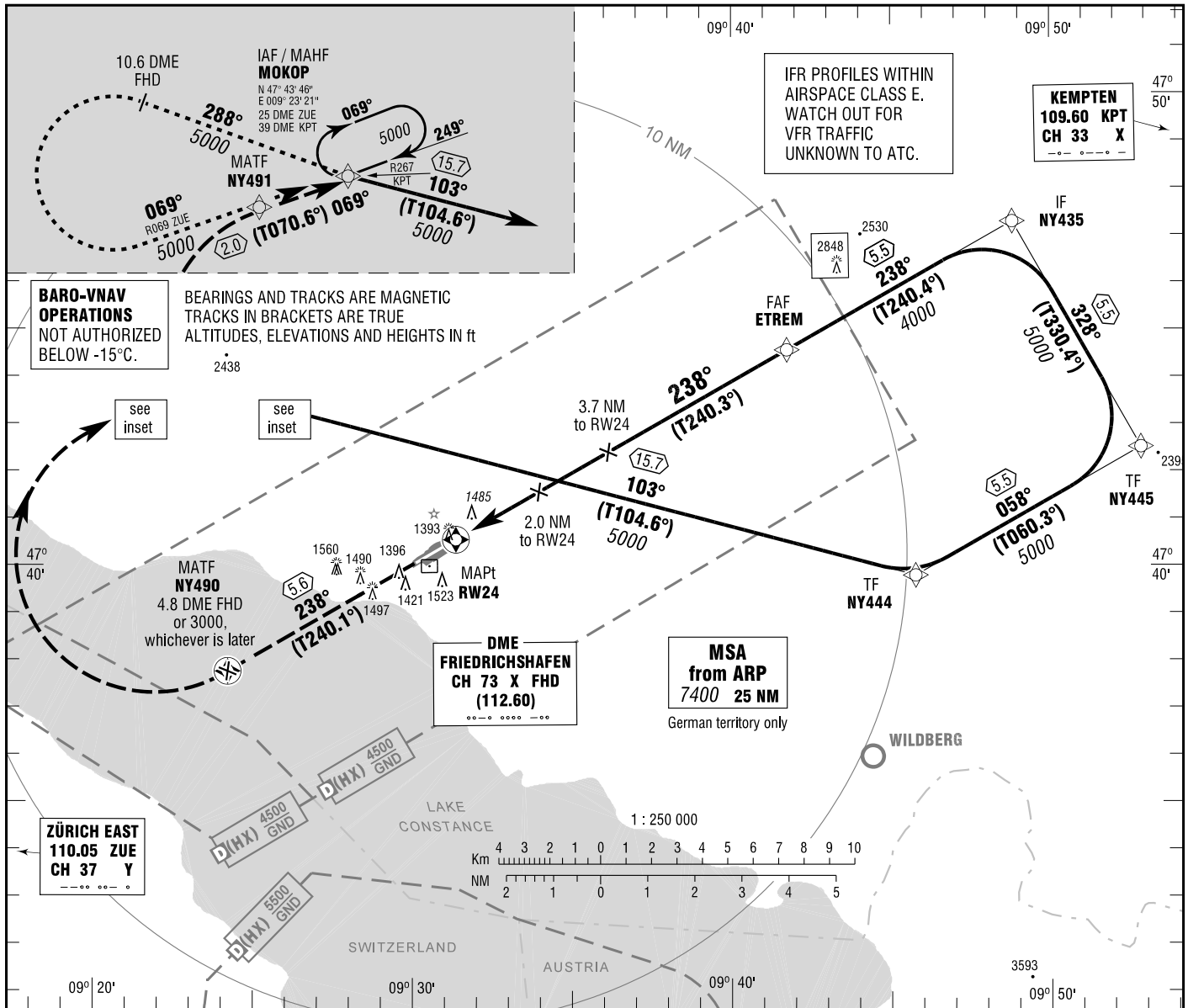


FRIEDRICHSHAFEN
RNAV (GPS)
RWY 24

ATIS 129.600
ZÜRICH ARRIVAL 119.925
TOWER 120.075

ELEV 1367
OCH RELATED TO VAR 2° E
THR 24 ELEV 1367

INSTRUMENT
APPROACH
CHART - ICAO



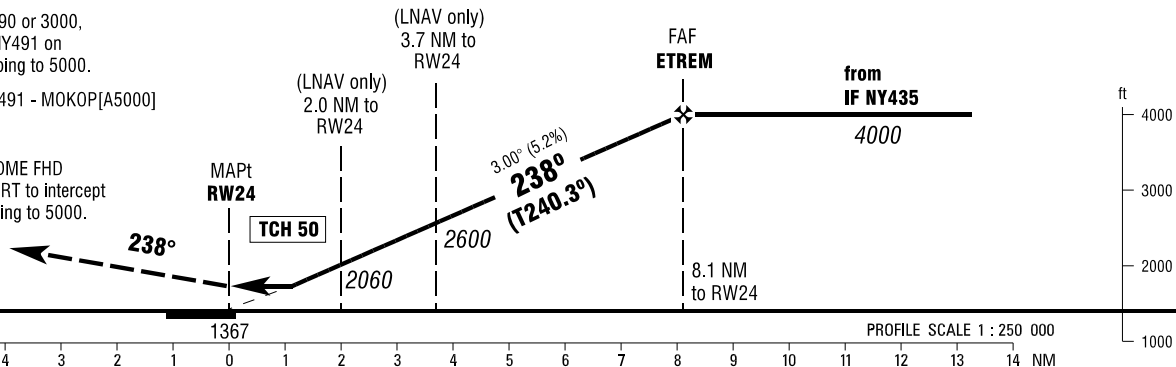
MISSED APPROACH PROCEDURE
RNAV (GPS)

Climb on track 238° to NY490 or 3000, whichever is later; RT, via NY491 on track 069° to MOKOP, climbing to 5000.

NY490 - [A3000+; R] - NY491 - MOKOP[A5000]

NON-RNAV

Climb on track 238° to 4.8 DME FHD or 3000, whichever is later; RT to intercept R069 ZUE to MOKOP, climbing to 5000.



OCA (OCH)	A	B	C	D
LNAV	1740 (370)	1740 (370)	1740 (370)	1740 (370)
LNAV / VNAV	1680 (310)	1690 (330)	1740 (370)	1740 (370)

DIST THR / RW24	1	2	3	4	5	6	7	8
ALTITUDE	1740	2060	2380	2700	3010	3330	3650	3970

Timing not authorized for defining the MAPt.

GS	kt	80	100	120	140	160	180
ETREM - RW24 (8.1 NM)	MIN:SEC	6:05	4:52	4:03	3:28	3:02	2:42
Rate of descent (5.2%)	ft / MIN	420	530	640	740	850	960

Correction: Obstacles revised. OCA(H) values & obstacles, note added.