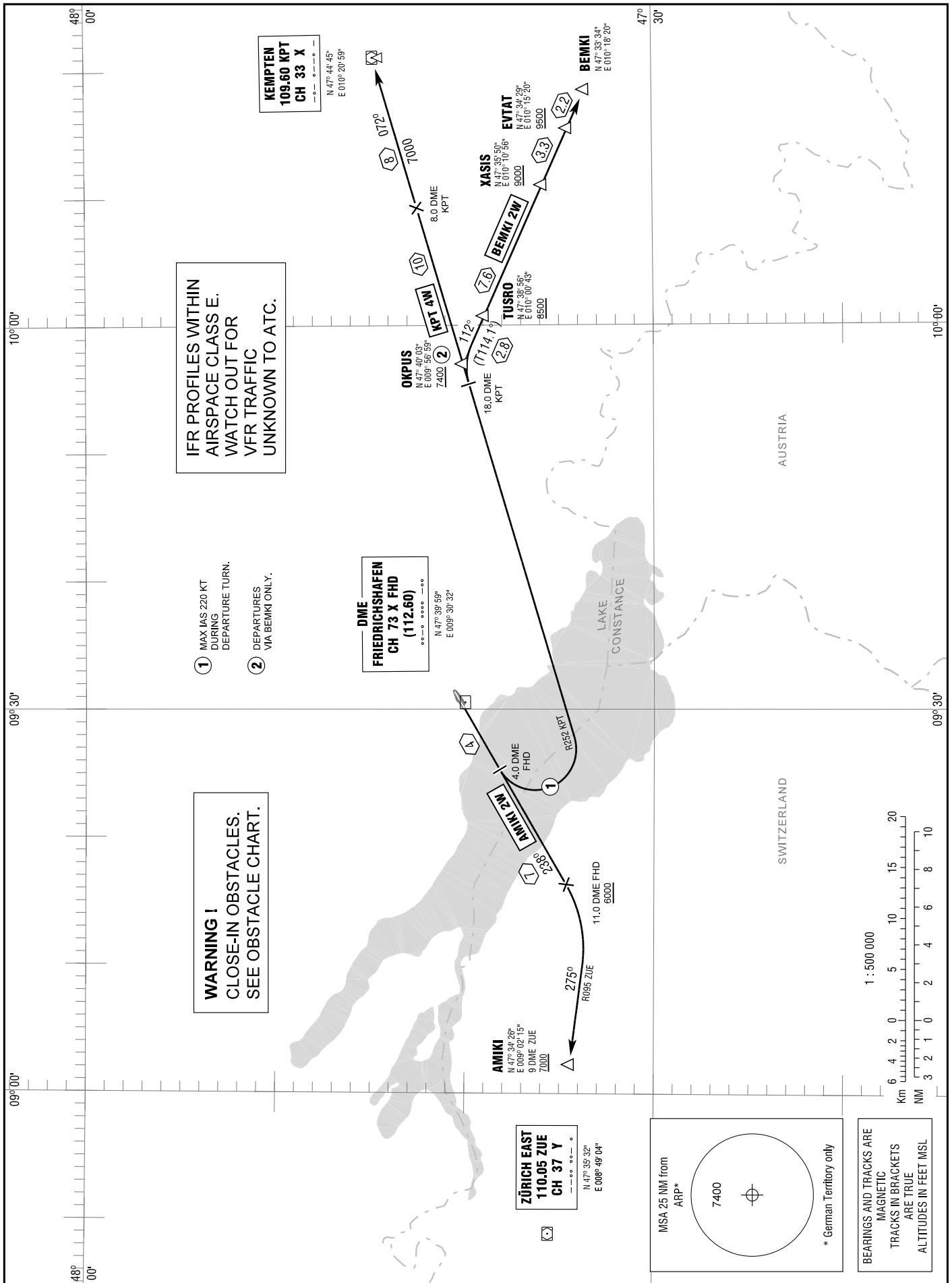


STANDARD DEPARTURE  
CHART - INSTRUMENT  
(SID)

TRANSITION  
ALTITUDE 5000  
VAR 2° E

ATIS  
ZÜRICH ARRIVAL  
TOWER  
129.600  
119.925  
120.075

FRIEDRICHSHAFEN  
RWY 24



Correction: Note added.

**WARNING!**  
CLOSE-IN OBSTACLES.  
SEE OBSTACLE CHART.

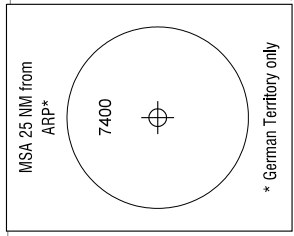
IFR PROFILES WITHIN  
AIRSPACE CLASS E.  
WATCH OUT FOR  
VFR TRAFFIC  
UNKNOWN TO ATC.

- ① MAX IAS 220 KT  
DURING  
DEPARTURE TURN.
- ② DEPARTURES  
VIA BEMKI ONLY.

**DME**  
FRIEDRICHSHAFEN  
CH 73 X FHD  
(112.60)  
N 47° 39' 59"  
E 009° 30' 32"

**KEMPTEN**  
109.60 KPT  
CH 33 X  
N 47° 44' 45"  
E 010° 20' 59"

**ZÜRICH EAST**  
110.05 ZUE  
CH 37 Y  
N 47° 35' 52"  
E 008° 49' 04"



BEARINGS AND TRACKS ARE  
MAGNETIC  
TRACKS IN BRACKETS  
ARE TRUE  
ALTITUDES IN FEET MSL