

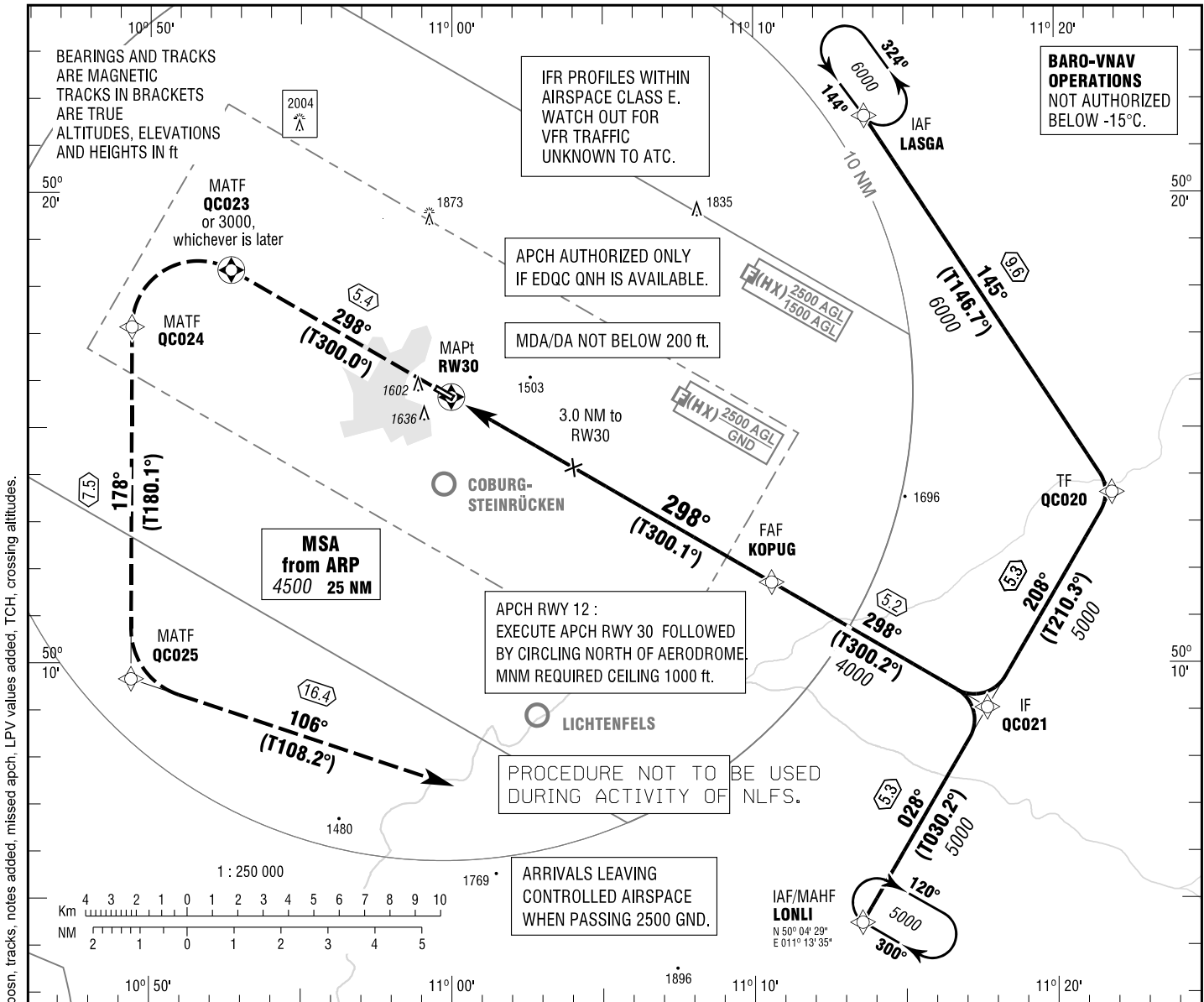
**INSTRUMENT  
APPROACH  
CHART - ICAO**

VAR 2° E

ELEV 1486  
OCH RELATED TO  
THR 30 ELEV 1453

COBURG ATIS 120.100  
MÜNCHEN RADAR 129.525  
COBURG INFO 128.675

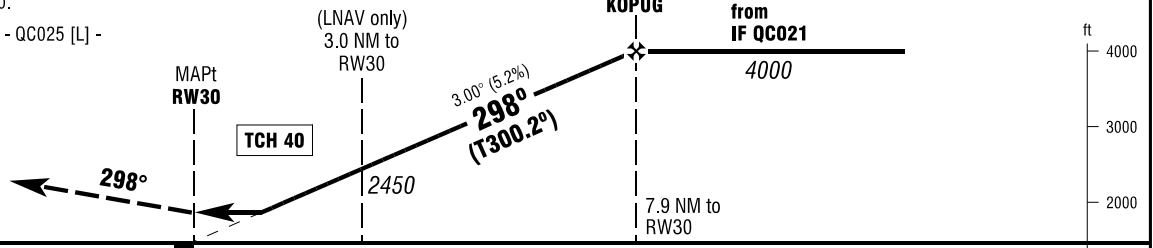
**COBURG - BRANDENSTEINSEBENE  
RNAV (GPS) RWY 30  
EGNOS CH 61425 E30A**



**MISSED APPROACH PROCEDURE**

Climb on track 298° to QC023 or 3000, whichever is later; LT, via QC024 on track 178° to QC025; LT, on track 106° to LONLI, climbing to 5000.

QC023 - [A3000+; L] - QC024 - QC025 [L] - LONLI [A5000]



OCA (OCH)	A	B
LNAV	1850 (400)	1850 (400)
LNAV / VNAV	1760 (300)	1760 (300)
LPV	1850 (400)	1850 (400)
CIRCLING OCH RELATED TO AD ELEV	1940 (450)	1990 (500)

DIST THR / RW30	2	3	4	5	6	7
ALTITUDE	2130	2450	2770	3090	3410	3730

Timing not authorized for defining the MAPt.

GS	kt	80	100	120	140
KOPUG - RW30 (7.9 NM)	MIN:SEC	5:56	4:44	3:57	3:23
Rate of descent (5.2%)	ft / MIN	420	530	640	740

\*NORTH OF AERODROME ONLY.

Correction: AD elevation, EGNOS channel added, LONLI hldg, KOPUG posn, tracks, notes added, missed apch, LPV values added, TCH, crossing altitudes.