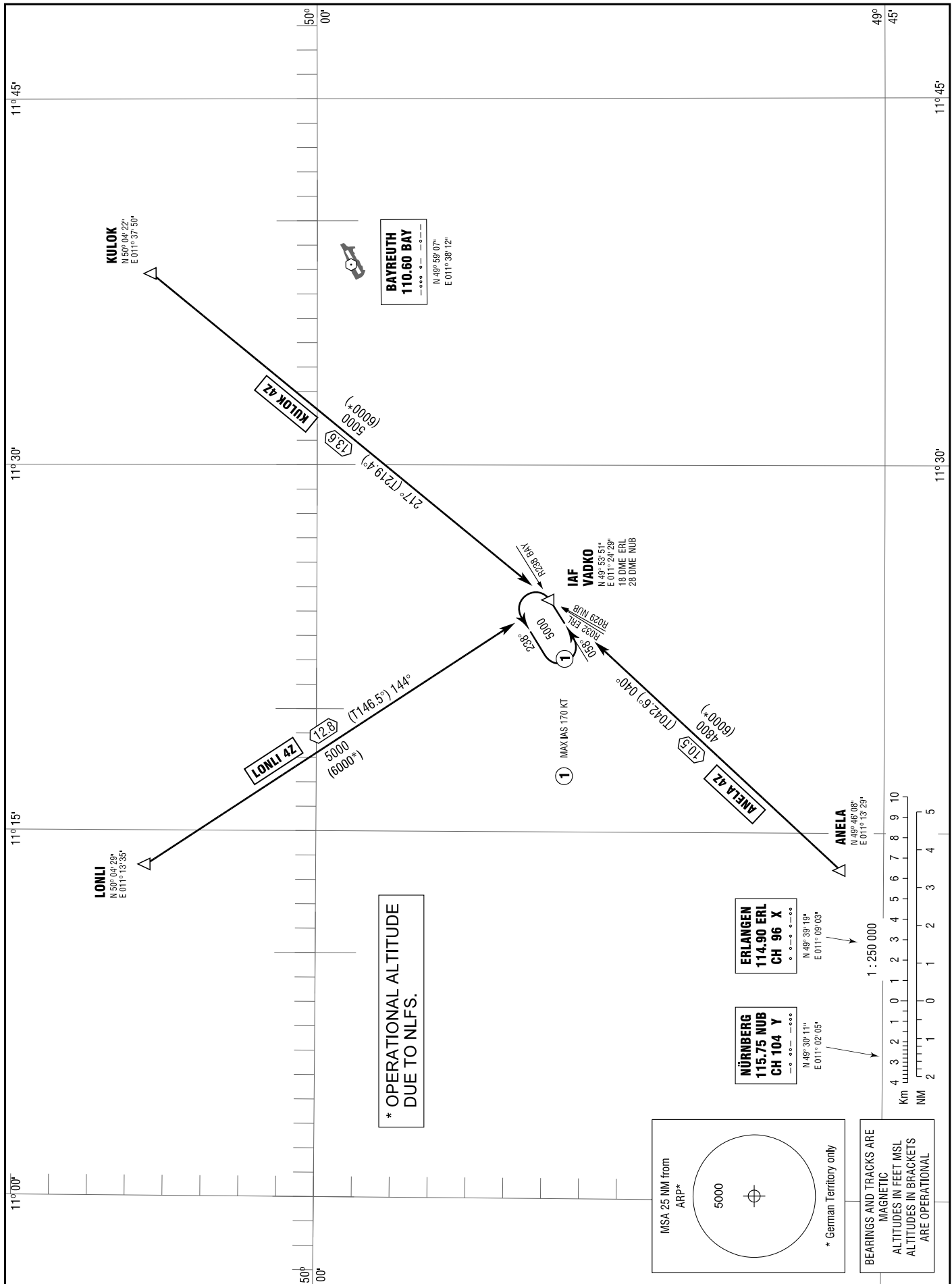


BAYREUTH
RWY 06/24

MÜNCHEN RADAR
INFO 129.525
127.525

TRANSITION
ALTITUDE 5000
VAR 2° E

STANDARD ARRIVAL
CHART - INSTRUMENT
(STAR)



Correction: BAY DME withdrawn, procedure.

STANDARD ARRIVAL
ROUTES – INSTRUMENT
(STAR)

BAYREUTH
RWY 06/24

Designator	Identification Significant Points	Mag (True) Track	Dist NM	MNM IFR Cruising Level	Remarks
1	2	3	4	5	6
ANELA 4Z	ANELA FOUR ZULU				1. BRNAV equipment necessary. 2. * Altitude restriction during activity of NLFS.
	△ ANELA				
	△ VADKO	040 (042.6)	10.5	4800 (6000*)	
KULOK 4Z	KULOK FOUR ZULU				
	△ KULOK				
	△ VADKO	217 (219.4)	13.6	5000 (6000*)	
LONLI 4Z	LONLI FOUR ZULU				
	△ LONLI				
	△ VADKO	144 (146.5)	12.8	5000 (6000*)	