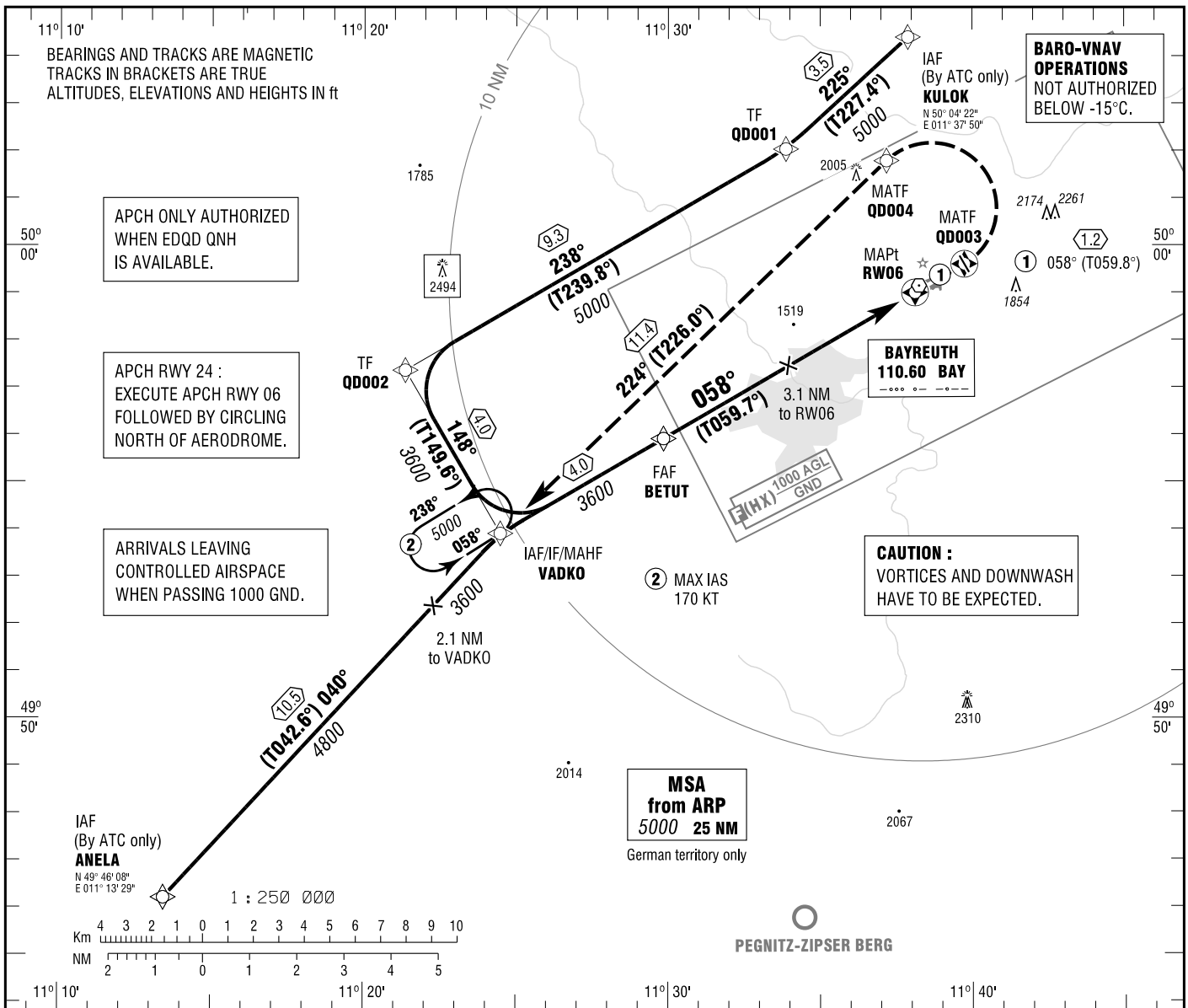


**INSTRUMENT
APPROACH
CHART - ICAO**

VAR 2° E
ELEV 1601
OCH RELATED TO
THR 06 ELEV 1587

129.525 MÜNCHEN RADAR
127.525 INFO

**BAYREUTH
RNAV (GPS)
RWY 06**



APCH ONLY AUTHORIZED
WHEN EDQD QNH
IS AVAILABLE.

APCH RWY 24 :
EXECUTE APCH RWY 06
FOLLOWED BY CIRCLING
NORTH OF AERODROME.

ARRIVALS LEAVING
CONTROLLED AIRSPACE
WHEN PASSING 1000 GND.

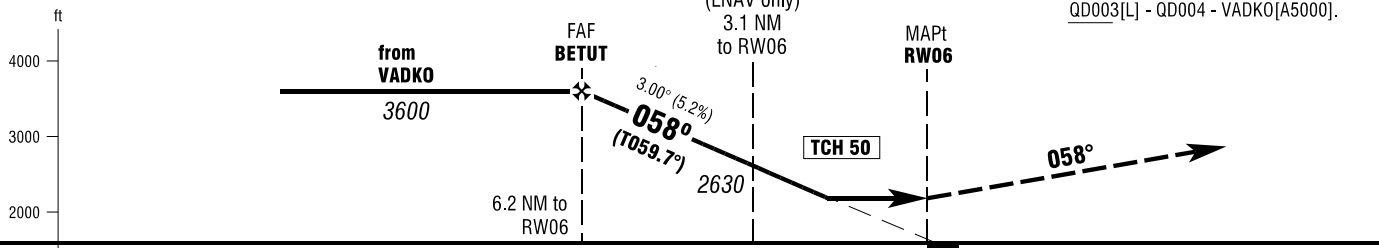
CAUTION :
VORTICES AND DOWNWASH
HAVE TO BE EXPECTED.

**BARO-VNAV
OPERATIONS
NOT AUTHORIZED
BELOW -15°C.**

**MSA
from ARP
5000 25 NM**
German territory only

**MISSED APPROACH PROCEDURE
RNAV (GPS)**

On track 058° to QD003, LT, via QD004
on track 224° to VADKO climbing to 5000.
QD003[L] - QD004 - VADKO[A5000].



PROFILE SCALE 1 : 250 000

OCA (OCH)	A	B
LNAV	2000 (420)	2000 (420)
LNAV / VNAV	1890 (300)	1890 (300)
CIRCLING OCH RELATED TO AD ELEV	2150 (550)	2470 (870)

DIST THR / RW06	6	5	4	3	2
ALTITUDE	3550	3230	2920	2600	2280

Timing not authorized for defining the MAPt.

GS	kt	80	100	120	140
BETUT - RW06 (6.2 NM)	MIN:SEC	4:38	3:42	3:05	2:39
Rate of descent (5.2%)	ft / MIN	420	530	640	740

*NORTH OF AERODROME ONLY.

Correction: OCA(H) obstacles & values.