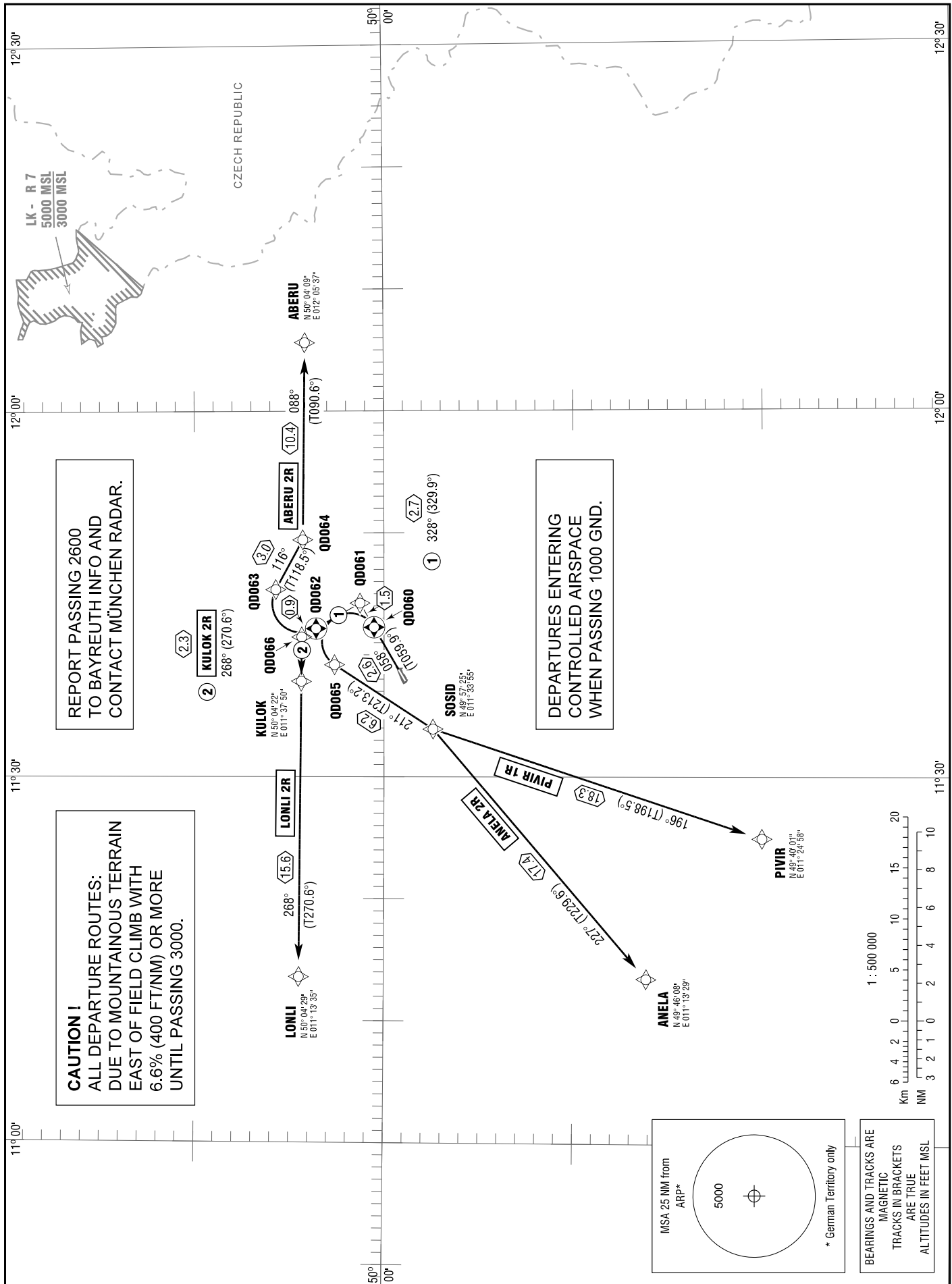


BAYREUTH  
RWY 06

INFO  
MÜNCHEN RADAR 127.525  
129.525

TRANSITION  
ALTITUDE 5000  
VAR 2° E

STANDARD DEPARTURE  
CHART - INSTRUMENT  
RNAV (GPS)



STANDARD DEPARTURE  
ROUTES – INSTRUMENT  
RNAV (GPS) - (SID)

BAYREUTH  
RWY 06

Designator	Route	After Take-Off		Remarks
		Climb to	Contact	
1	2	3	4	5
<b>ABERU 2R</b>	<b>ABERU TWO ROMEO</b> Climb on track 058° to QD061, LT, on track 328° to QD062 or 4000, whichever is later, RT, via QD063 on track 116° to QD064, LT, on track 088° to ABERU (Δ). Climb with 6.6% (400 ft/NM) or more until passing 3000. <b>RNAV(GPS):</b> [A2000+] - QD061[L] - QD062 - [A4000+; R] - QD063 - QD064[L] - ABERU.	5000 ft	München Radar 129.525	
<b>ANELA 2R</b>	<b>ANELA TWO ROMEO</b> Climb on track 058° to QD060, LT, via QD065 on track 211° to SOSID, RT, on track 227° to ANELA (Δ). Climb with 6.6% (400 ft/NM) or more until passing 3000. <b>RNAV(GPS):</b> QD060[A2000+; L] - QD065 - SOSID[R] - ANELA.			
<b>KULOK 2R</b>	<b>KULOK TWO ROMEO</b> Climb on track 058° to QD061, LT, on track 328° to QD066, LT, on track 268° to KULOK (Δ). Climb with 6.6% (400 ft/NM) or more until passing 3000. <b>RNAV(GPS):</b> [A2000+] - QD061[L] - QD066[L] - KULOK.			
<b>LONLI 2R</b>	<b>LONLI TWO ROMEO</b> Climb on track 058° to QD061, LT, on track 328° to QD066, LT, on track 268° to LONLI (Δ). Climb with 6.6% (400 ft/NM) or more until passing 3000. <b>RNAV(GPS):</b> [A2000+] - QD061[L] - QD066[L] - LONLI.			
<b>PIVIR 1R</b>	<b>PIVIR ONE ROMEO</b> Climb on track 058° to QD060, LT, via QD065 on track 211° to SOSID, LT, on track 196° to PIVIR (Δ). Climb with 6.6% (400 ft/NM) or more until passing 3000. <b>RNAV(GPS):</b> QD060[A2000+; L] - QD065 - SOSID[L] - PIVIR.			

(Sample: QD060 fly-over way point)