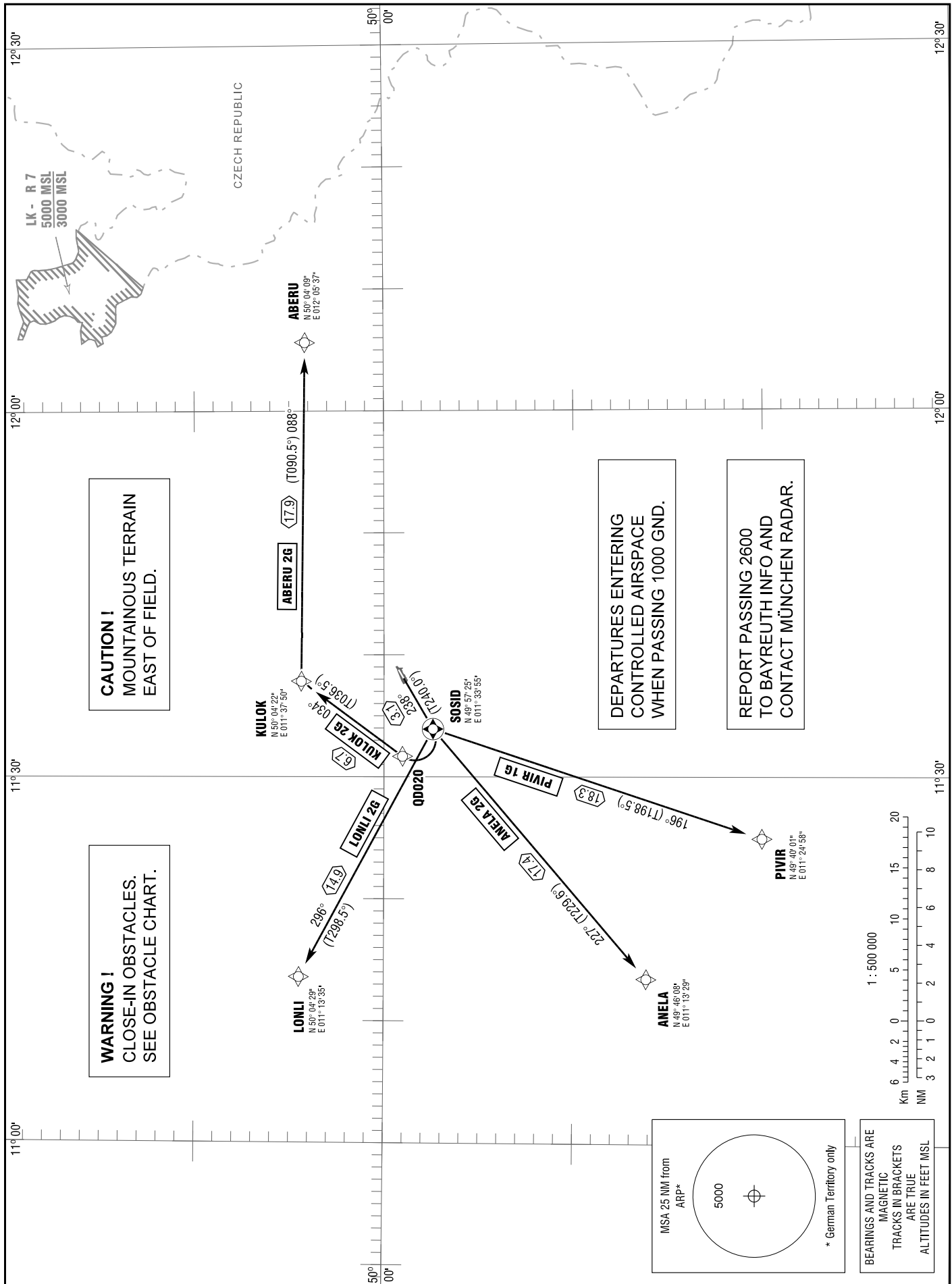


BAYREUTH
RWY 24

INFO MÜNCHEN RADAR 127.525
129.525

TRANSITION
ALTITUDE 5000
VAR 2° E

STANDARD DEPARTURE
CHART - INSTRUMENT
RNAV (GPS)



STANDARD DEPARTURE
ROUTES – INSTRUMENT
RNAV (GPS) - (SID)

BAYREUTH
RWY 24

Designator	Route	After Take-Off		Remarks
		Climb to	Contact	
1	2	3	4	5
ABERU 2G	ABERU TWO GOLF Climb on track 238° to SOSID, RT, via QD020 on track 034° to KULOK (Δ), RT, on track 088° to ABERU (Δ). RNAV(GPS): [A2000+] - SOSID[R] - QD020 - KULOK[R] - ABERU.	5000 ft	München Radar 129.525	Not to be used during activity of NLFS. ALTN Route by ATC.
ANELA 2G	ANELA TWO GOLF Climb on track 238° to SOSID, LT, on track 227° to ANELA (Δ). Climb with 4.5% (273 ft/NM) or more until passing 5000. RNAV(GPS): [A2000+] - SOSID[L] - ANELA.			1. Not to be used during activity of NLFS. ALTN Route by ATC. 2. PDG due to airspace structure.
KULOK 2G	KULOK TWO GOLF Climb on track 238° to SOSID, RT, via QD020 on track 034° to KULOK (Δ). RNAV(GPS): [A2000+] - SOSID[R] - QD020 - KULOK.			Not to be used during activity of NLFS. ALTN Route by ATC.
LONLI 2G	LONLI TWO GOLF Climb on track 238° to SOSID, RT, on track 296° to LONLI (Δ). Climb with 4.5% (273 ft/NM) or more until passing 5000. RNAV(GPS): [A2000+] - SOSID[R] - LONLI.			1. Not to be used during activity of NLFS. ALTN Route by ATC. 2. PDG due to airspace structure.
PIVIR 1G	PIVIR ONE GOLF Climb on track 238° to SOSID, LT, on track 196° to PIVIR (Δ). Climb with 4.5% (273 ft/NM) or more until passing 5000. RNAV(GPS): [A2000+] - SOSID[L] - PIVIR.			1. Only for flights DEST EDDN. 2. Not to be used during activity of NLFS. ALTN Route by ATC. 3. PDG due to airspace structure.

(Sample: SOSID fly-over way point)