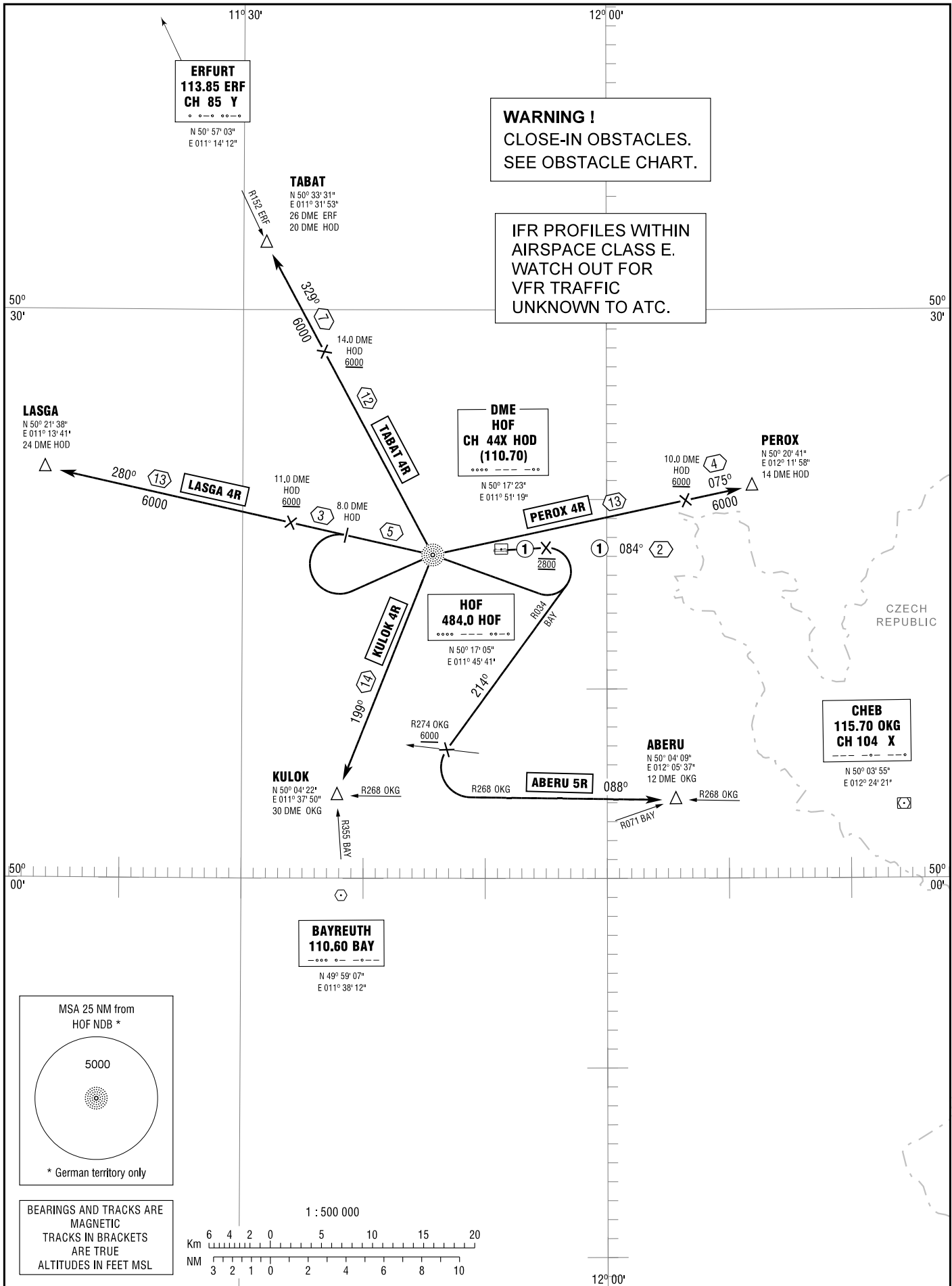


STANDARD DEPARTURE  
CHART - INSTRUMENT  
(SID)

TRANSITION  
ALTITUDE 5000  
VAR 2° E

HOF TOWER	124.350
MÜNCHEN RADAR	129.525

HOF-PLAUEN  
RWY 08



Correction: Runway designation, procedure, BAY DME & LF-R 7 withdrawn, note added.