

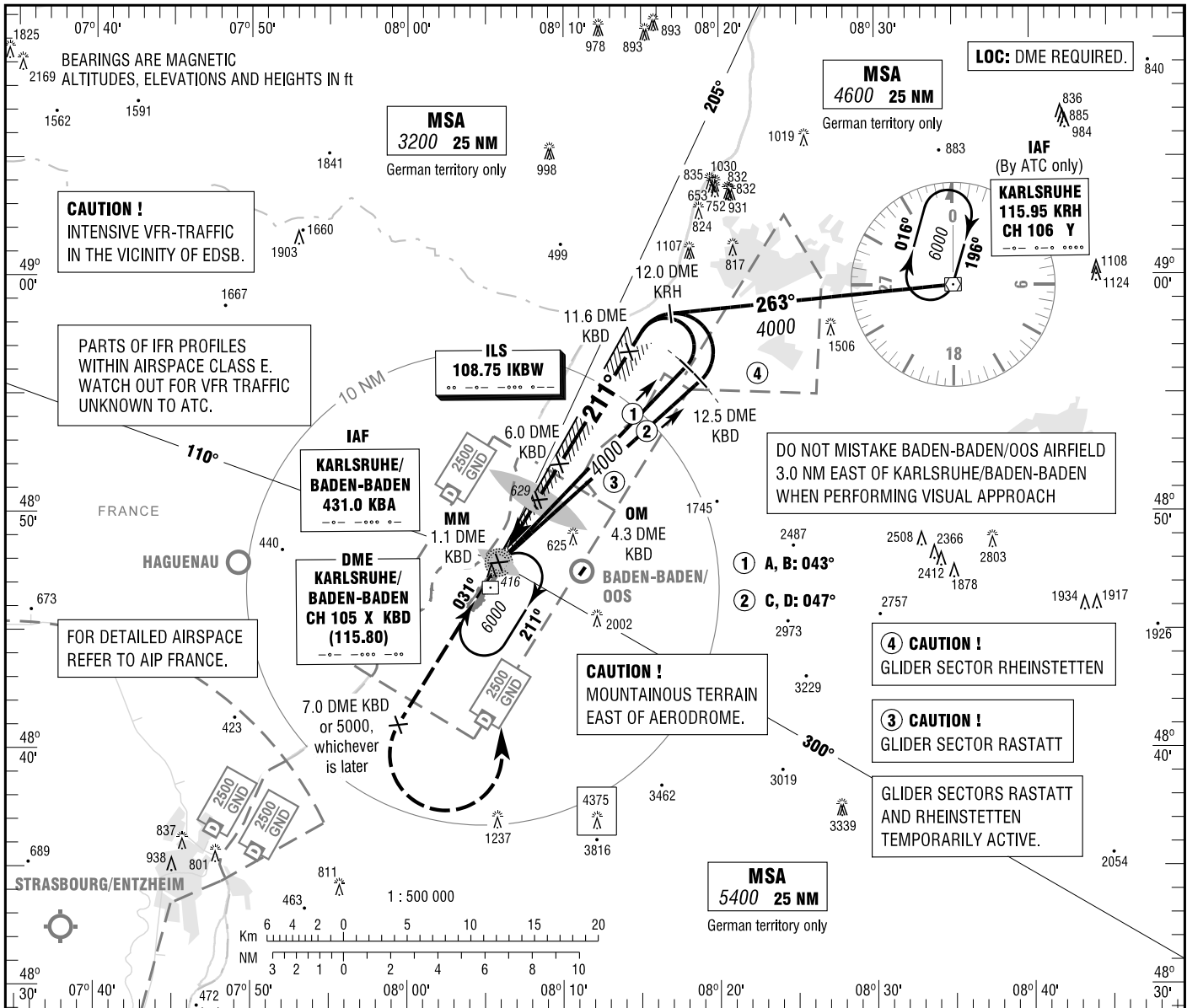
**INSTRUMENT
APPROACH
CHART - ICAO**

VAR 1° E

ELEV 409
OCH RELATED TO
THR 21 ELEV 405

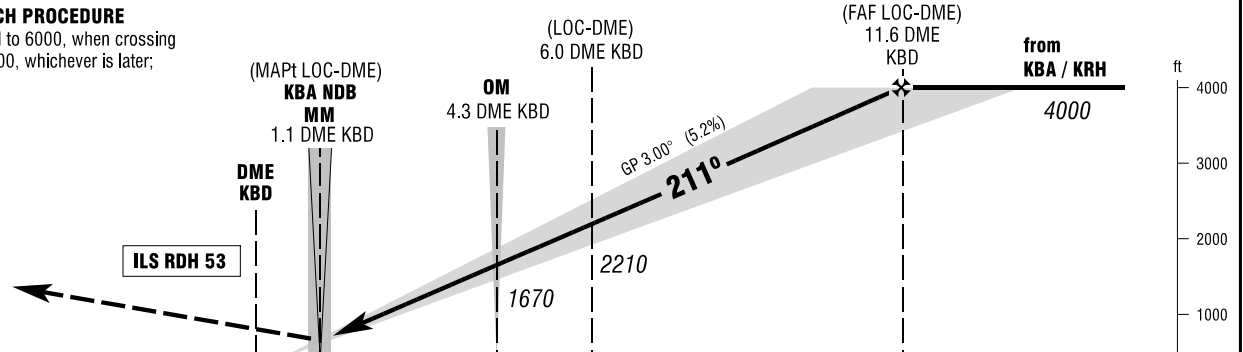
BADEN ATIS 121.275
STRASBOURG APPROACH 119.575
BADEN TOWER 134.100
BADEN GROUND 121.825

**KARLSRUHE/BADEN-BADEN
ILS CAT II & III or LOC
RWY 21**



MISSED APPROACH PROCEDURE

Climb straight ahead to 6000, when crossing
7.0 DME KBD or 5000, whichever is later;
LT to KBA NDB.



NM 6 5 4 3 2 1 0 1 2 3 4 5 6 7 8 9 10 11 12 13 14 NM PROFILE SCALE 1 : 250 000

OCA (OCH)	A	B	C	D	D _i
ILS CAT I	547 (142)	557 (152)	567 (162)	576 (171)	
ILS CAT II	458 (53)	475 (70)	488 (83)	501 (96)	
LOC-DME	880 (480)	880 (480)	880 (480)	880 (480)	

DME KBD	2	3	4	5	6	7	8	9	10	11
DIST THR	1.5	2.5	3.5	4.5	5.5	6.5	7.5	8.5	9.5	10.5
ALTITUDE	940	1260	1580	1890	2210	2530	2850	3170	3490	3810

LOC-DME: Timing not authorized for defining the MAPt.

GS	kt	80	100	120	140	160	180
OM-THR (3.8 NM)	MIN:SEC	2:51	2:17	1:54	1:38	1:26	1:16
Rate of descent (5.2%)	ft / MIN	420	530	640	740	850	960

CAT IIIA AND CAT IIIB (MNM RVR 75M) APPROVED.

Correction: Missed approach text.