

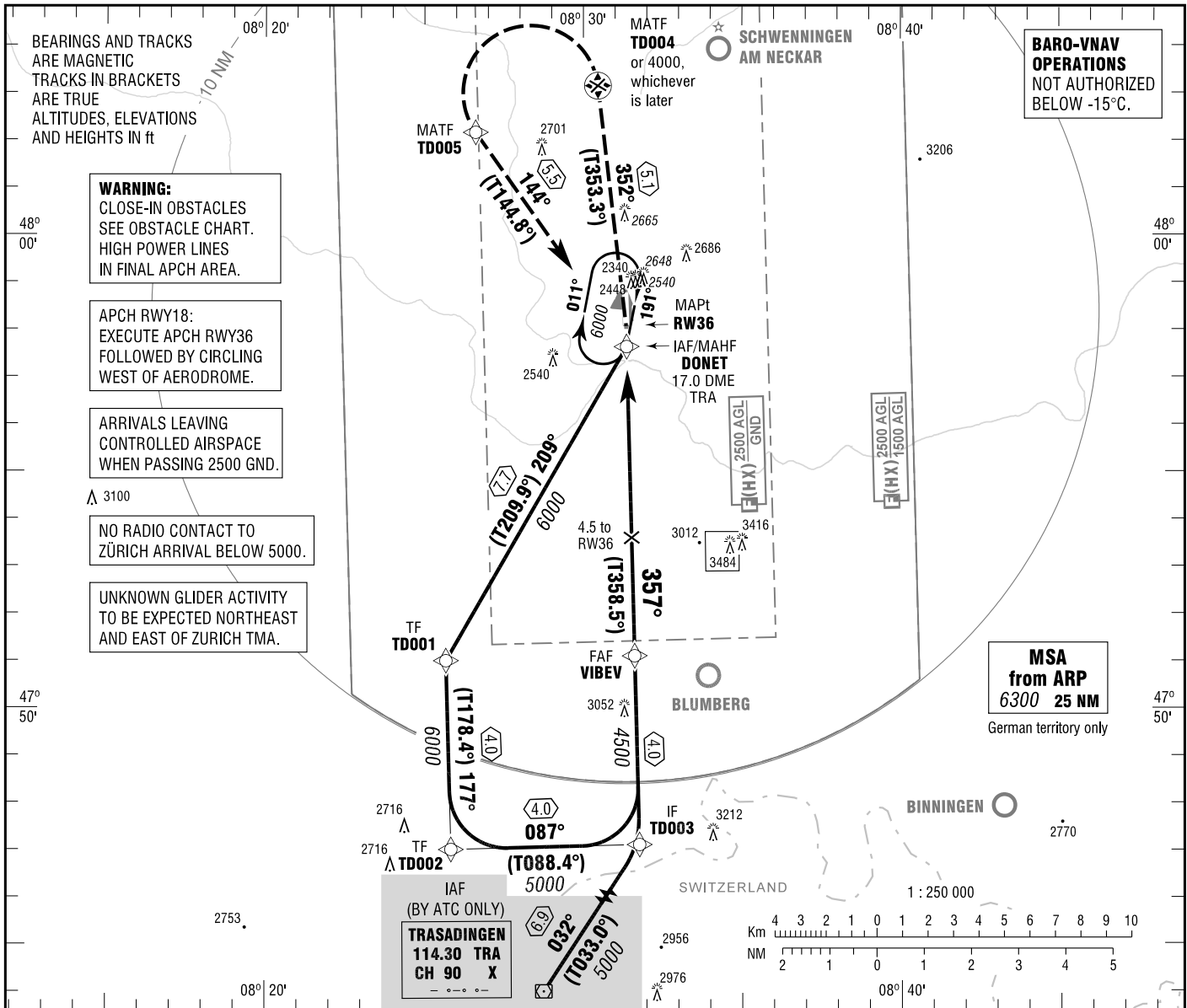
**INSTRUMENT
APPROACH
CHART - ICAO**

VAR 1°

ELEV 2231
OCH RELATED TO
THR 36 ELEV 2219

ZÜRICH ARRIVAL 131.150
DONAUESCHINGEN INFO 124.250
122.500

**DONAUESCHINGEN-VILLINGEN
RNAV (GPS)
RWY 36**



WARNING:
CLOSE-IN OBSTACLES
SEE OBSTACLE CHART.
HIGH POWER LINES
IN FINAL APCH AREA.

APCH RWY18:
EXECUTE APCH RWY36
FOLLOWED BY CIRCLING
WEST OF AERODROME.

ARRIVALS LEAVING
CONTROLLED AIRSPACE
WHEN PASSING 2500 GND.

NO RADIO CONTACT TO
ZÜRICH ARRIVAL BELOW 5000.

UNKNOWN GLIDER ACTIVITY
TO BE EXPECTED NORTHEAST
AND EAST OF ZÜRICH TMA.

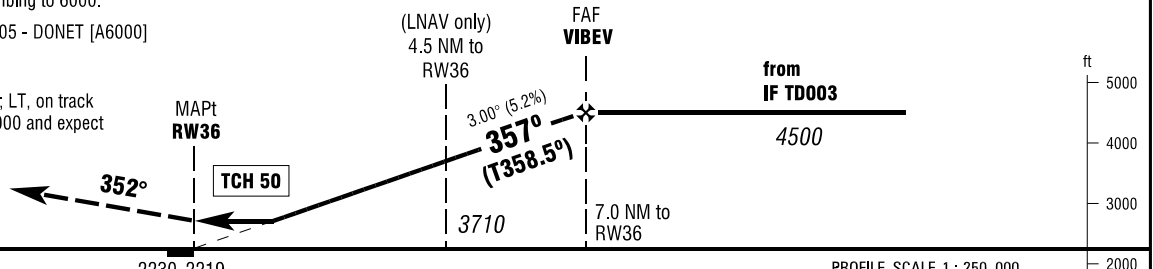
**BARO-VNAV
OPERATIONS
NOT AUTHORIZED
BELOW -15°C.**

**MSA
from ARP
6300 25 NM**
German territory only

MISSED APPROACH PROCEDURE

RNAV (GPS)
Climb on track 352° to TD004 or 4000,
whichever is later; LT, via TD005
on track 144° to DONET, climbing to 6000.
TD004 - [A4000+; L] - TD005 - DONET [A6000]

NON-RNAV
Climb on track 352° to 4000; LT, on track
144° continue climbing to 6000 and expect
radar vectors.



OCA (OCH)	A	B
LNAV	2790 (570)	2900 (680)
LNAV / VNAV	2590 (370)	2610 (390)
CIRCLING OCH RELATED TO AD ELEV	2960 (730)	2960 (730)

DIST THR / RW36	2	3	4	5	6
ALTITUDE	2910	3230	3550	3870	4180

Timing not authorized for defining the MAPt.

GS	kt	80	100	120	140
VIBEV - RW36 (7.0 NM)	MIN:SEC	5:15	4:12	3:30	3:00
Rate of descent (5.2%)	ft / MIN	420	530	640	740

*WEST OF AERODROME ONLY.

Correction: OCA(H) values.