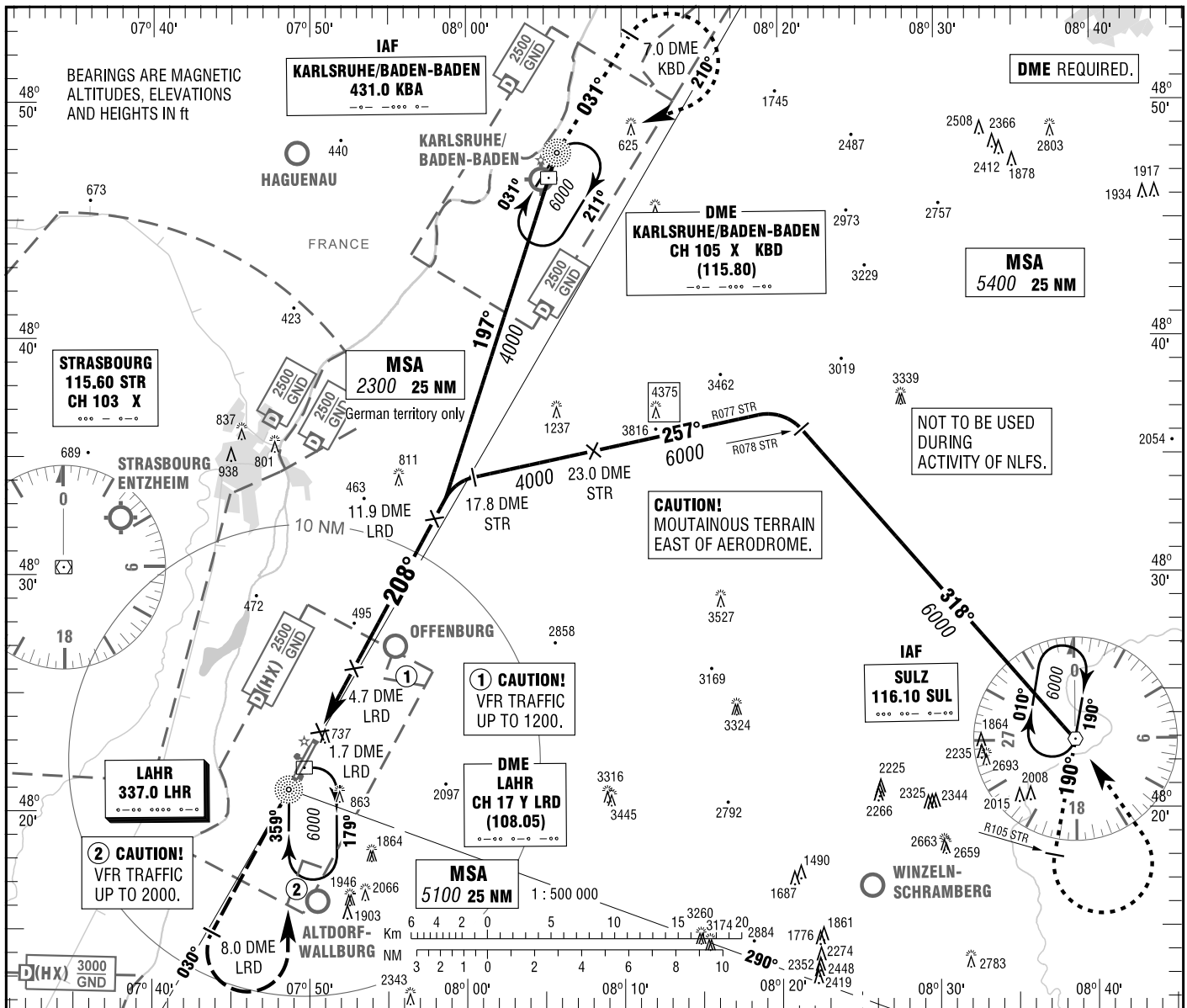


**INSTRUMENT
APPROACH
CHART - ICAO**

VAR 1° E ELEV 511
OCH RELATED TO
THR 21 ELEV 500

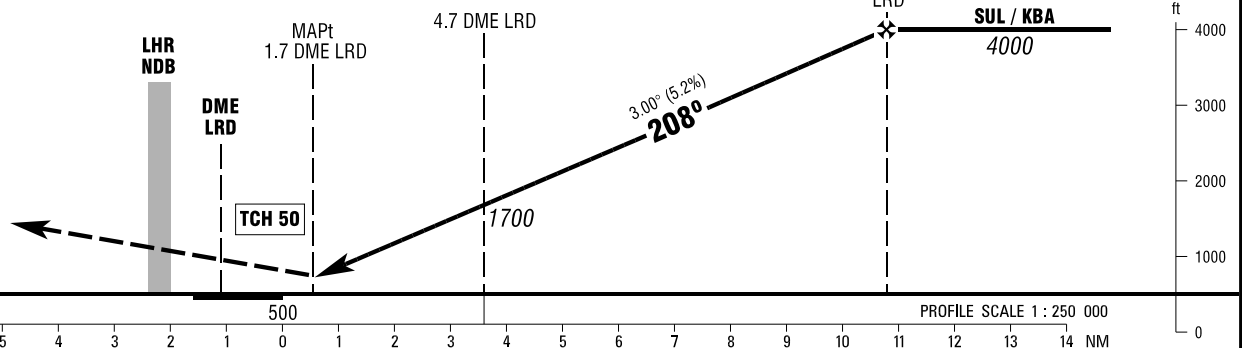
STRASBOURG RADAR 119.450
TOWER 125.175

**LAHR
NDB Z
RWY 21**



MISSED APPROACH PROCEDURE

Climb straight ahead to 8.0 DME LRD;
LT to LHR NDB climbing to 6000.



OCA (OCH)	A	B	C	D
NDB-DME	990 (490)	990 (490)	990 (490)	990 (490)

DME LRD	3	4	5	6	7	8	9	10	11
DIST THR	1.9	2.9	3.9	4.9	5.9	6.9	7.9	8.9	9.9
ALTITUDE	1160	1480	1800	2120	2430	2750	3070	3390	3710

Timing not authorized for defining the MAPt.

GS	kt	80	100	120	140	160	180
4.7 DME LRD - MAPt (3.0 NM)	MIN:SEC	2:15	1:48	1:30	1:17	1:08	1:00
Rate of descent (5.2%)	ft / MIN	420	530	640	740	850	960

Correction: CTR, obstacles.