

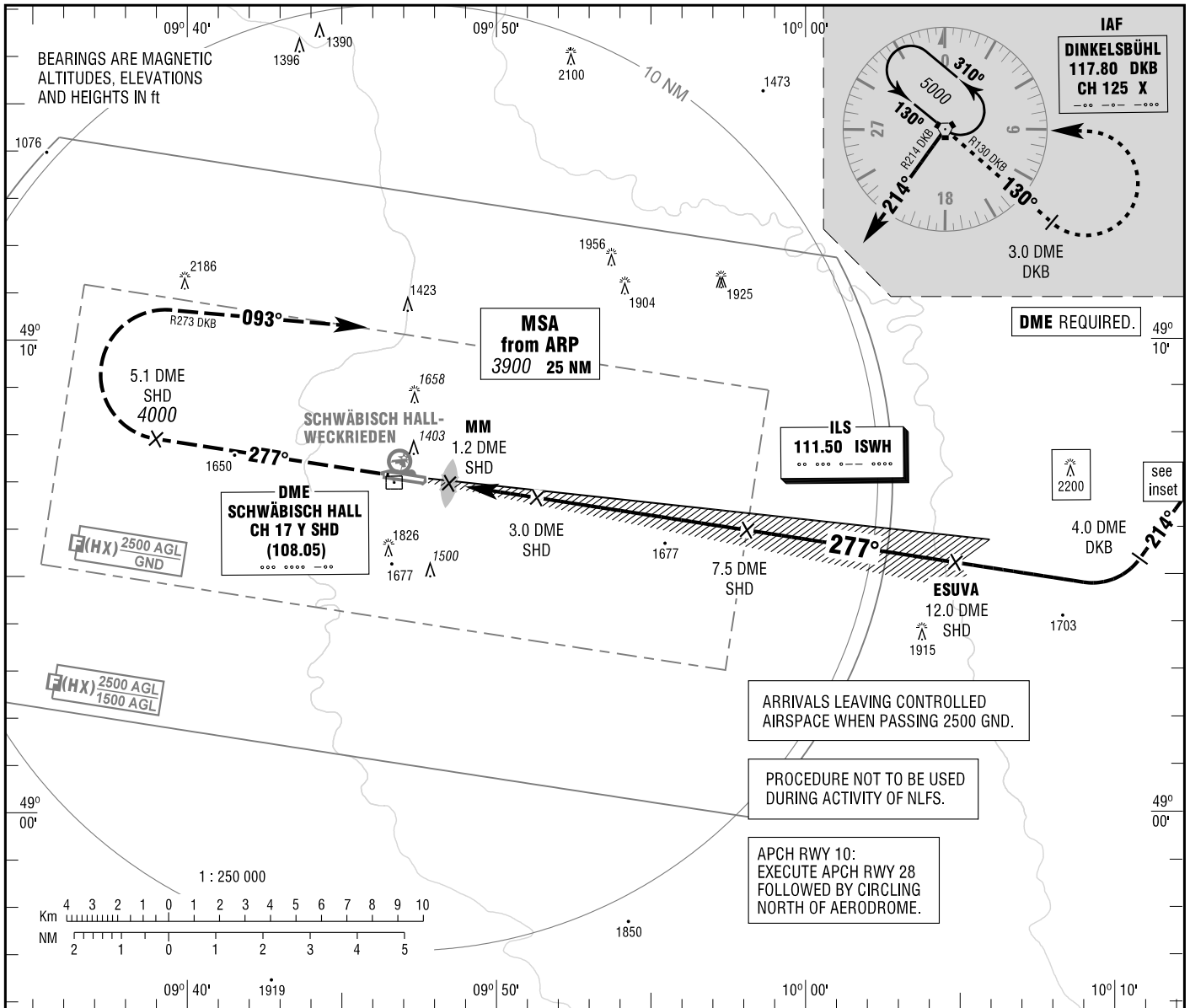
**INSTRUMENT APPROACH CHART - ICAO**

VAR 2° E

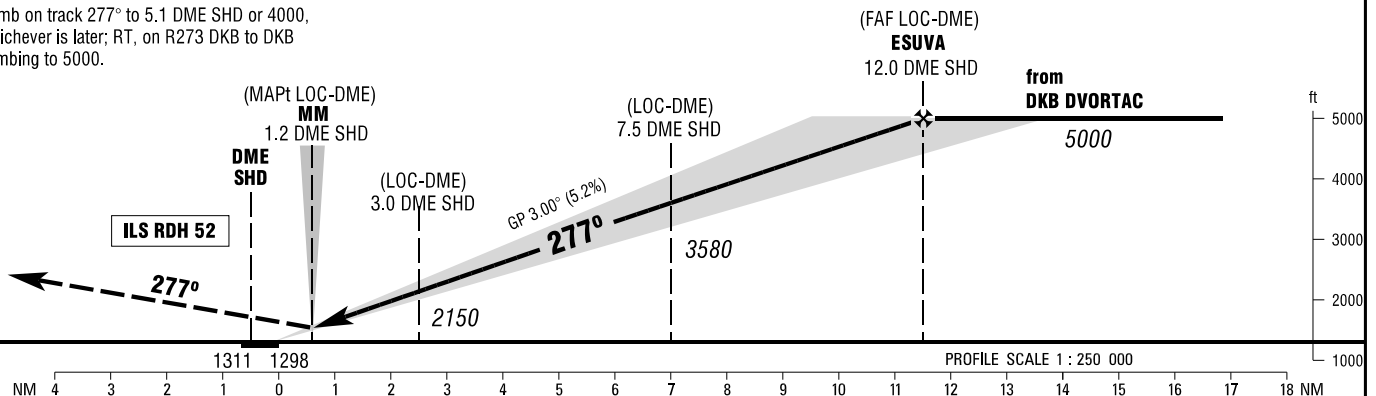
ELEV 1311  
OCH RELATED TO THR 28 ELEV 1298

ATIS 133.875  
LANGEN RADAR 125.050  
INFO 129.225

**SCHWÄBISCH HALL ILS or LOC RWY 28**



**MISSED APPROACH PROCEDURE**  
Climb on track 277° to 5.1 DME SHD or 4000, whichever is later; RT, on R273 DKB to DKB climbing to 5000.



OCA (OCH)	A	B	C
ILS-DME CAT I	1494 (196)	1504 (206)	1514 (216)
LOC-DME	1750 (450)	1750 (450)	1750 (450)
CIRCLING *	1960 (650)	1960 (650)	2060 (740)

DME SHD	2	3	4	5	6	7	8	9	10	11
DIST THR	1.5	2.5	3.5	4.5	5.5	6.5	7.5	8.5	9.5	10.5
ALTITUDE	1830	2150	2470	2790	3110	3420	3740	4060	4380	4700

**LOC-DME:** Timing not authorized for defining the MAPt.

GS	kt	80	100	120	140
3.0 DME SHD - THR (2.5 NM)	MIN:SEC	1:53	1:30	1:15	1:04
Rate of descent (5.2%)	ft / MIN	420	530	640	740

\*NORTH OF AERODROME ONLY.

Correction: Circling OCA(H) values.