

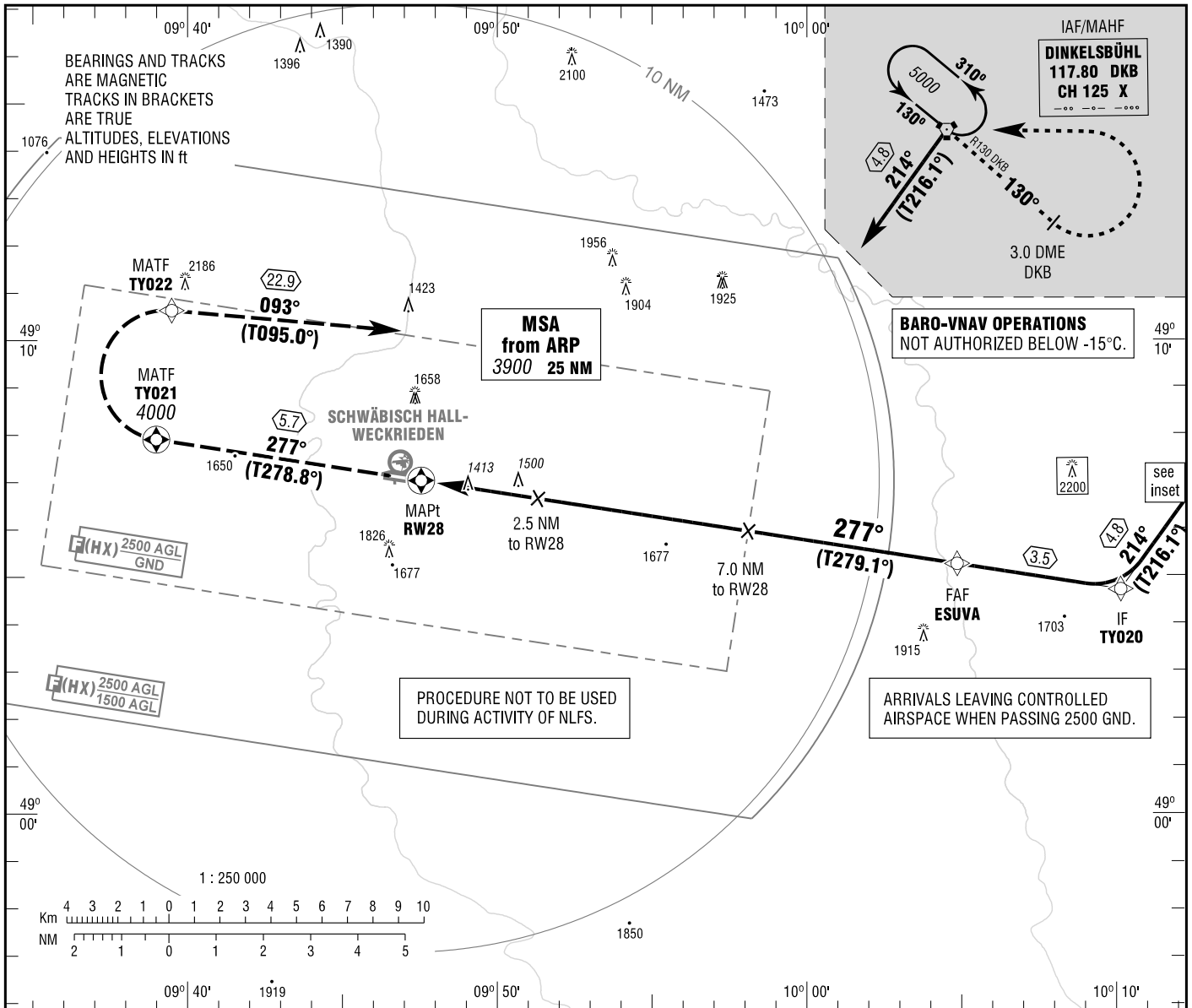
**INSTRUMENT
APPROACH
CHART - ICAO**

VAR 2° E

ELEV 1311
OCH RELATED TO
THR 28 ELEV 1298

ATIS 133.875
LANGEN RADAR 125.050
INFO 129.225

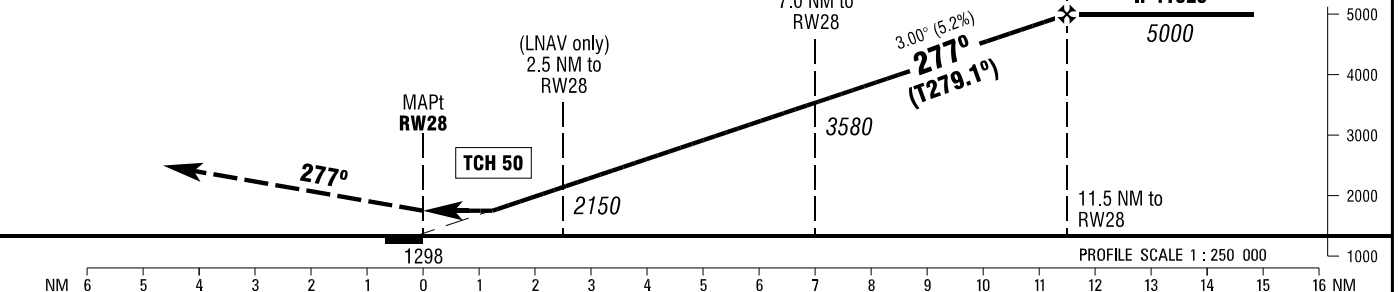
**SCHWÄBISCH HALL
RNAV (GPS) RWY 28
EGNOS CH 56890 E28A**



MISSED APPROACH PROCEDURE

Climb on track 277° to TY021 or 4000, whichever is later; RT, via TY022 on track 093° to DKB climbing to 5000.

TY021 - [A4000, R] - TY022 - DKB [A5000]



OCA (OCH)	A	B	C
LNAV	1750 (450)	1750 (450)	1750 (450)
LNAV / VNAV	1660 (370)	1660 (370)	1660 (370)
LPV	1750 (450)	1750 (450)	1750 (450)

DIST THR / RW28	2	3	4	5	6	7	8	9	10	11
ALTITUDE	1990	2310	2630	2940	3260	3580	3900	4220	4540	4860

Timing not authorized for defining the MAPt.

GS	kt	80	100	120	140
ESUVA - RW28 (11.5 NM)	MIN:SEC	8:38	6:54	5:45	4:56
Rate of descent (5.2%)	ft / MIN	420	530	640	740

Correction: LPV established, OCA(H) values, SHD DME withdrawn.